



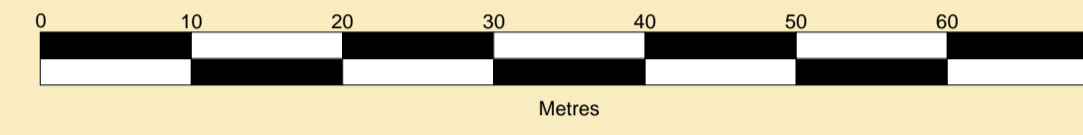
PORT OF SHEERNESS LIMITED

Gary Doyle
Group Harbour Master

River Medway

**3002-1-2023-002
SHEERNESS DOCKS
BERTHS NO 1 & 11**

SCALE 1:500 at A1



DEPTHS
Depths are in metres and are reduced to chart datum being 2.90m below Ordnance Datum (Newlyn), which is approximately the level of the Lowest Astronomical Tide.

HEIGHTS
Heights are in metres. Underlined figures show heights above Chart Datum.

DEPTH COLOUR TABLE

- (-1.5m,0m)
- (0m,10m)
- (10m,12m)
- (12m,17m)
- (>=17m)

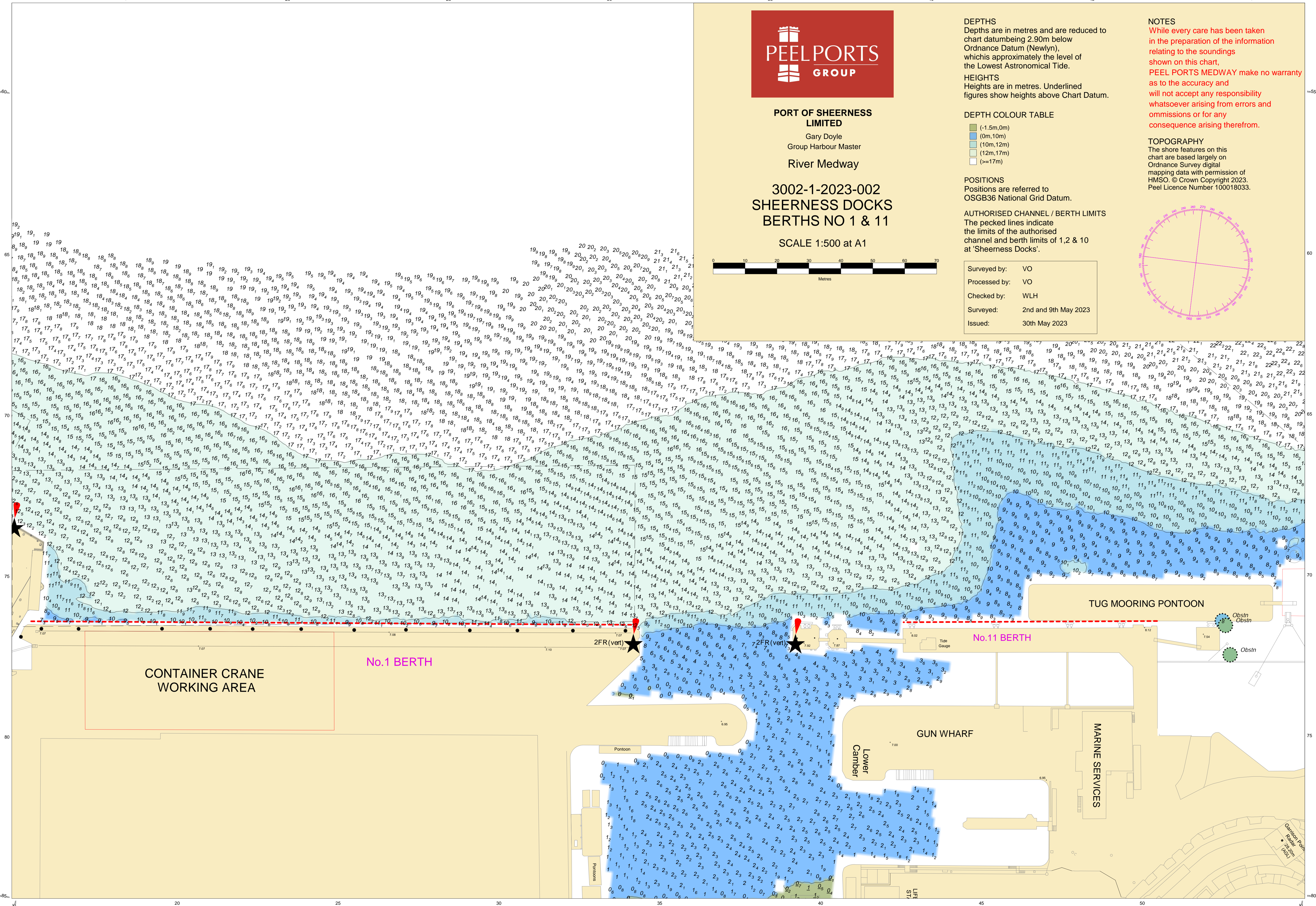
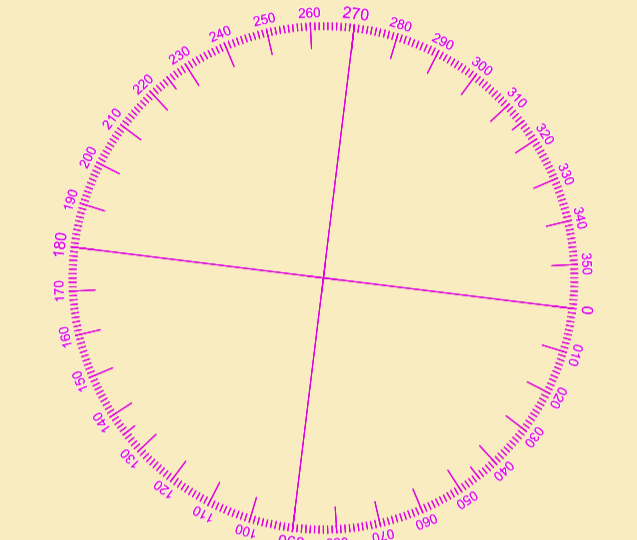
POSITIONS
Positions are referred to OSGB36 National Grid Datum.

AUTHORISED CHANNEL / BERTH LIMITS
The pecked lines indicate the limits of the authorised channel and berth limits of 1,2 & 10 at 'Sheerness Docks'.

Surveyed by:	VO
Processed by:	VO
Checked by:	WLH
Surveyed:	2nd and 9th May 2023
Issued:	30th May 2023

NOTES
While every care has been taken in the preparation of the information relating to the soundings shown on this chart, **PEEL PORTS MEDWAY** make no warranty as to the accuracy and will not accept any responsibility whatsoever arising from errors and omissions or for any consequence arising therefrom.

TOPOGRAPHY
The shore features on this chart are based largely on Ordnance Survey digital mapping data with permission of HMSO. © Crown Copyright 2023. Peel Licence Number 100018033.



CONTAINER CRANE WORKING AREA

No.1 BERTH

2FR (vert)

2FR (vert)

No.11 BERTH

TUG MOORING PONTOON

GUN WHARF

MARINE SERVICES

Lower Camber

Garrett Point