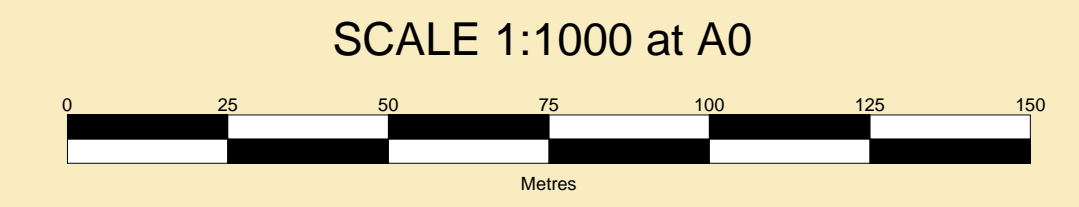




**CLYDEPORT OPERATIONS LIMITED**  
GARY DOYLE  
Group Harbour Master

Firth of Clyde  
**CPA001-1-2025-001**  
**ARDROSSAN HARBOUR AND APPROACHES**



**DEPTHS**  
Depths are in metres and are reduced to chart datum being 1.60m below Ordnance Datum (Newlyn), which is approximately the level of Lowest Astronomical Tide.

**HEIGHTS**  
Heights are in metres. Underlined figures show heights above Chart Datum.

**DEPTH COLOUR TABLE**

Light Blue	(-1.4m, 0m)
Blue	(0m, 4m)
Dark Blue	(4m, 5.2m)
Light Green	(5.2m, 5.5m)
White	( $\geq$ 5.5m)

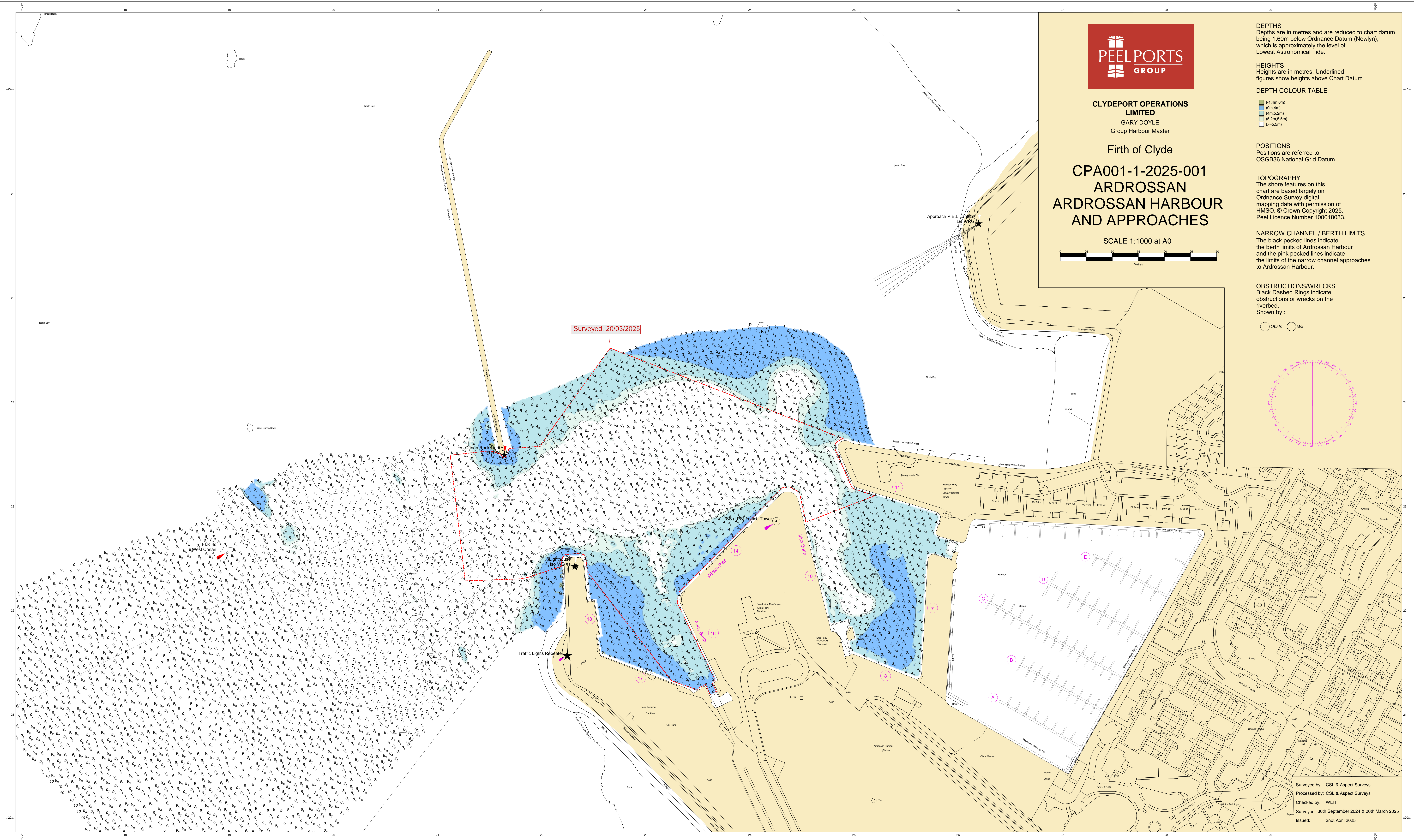
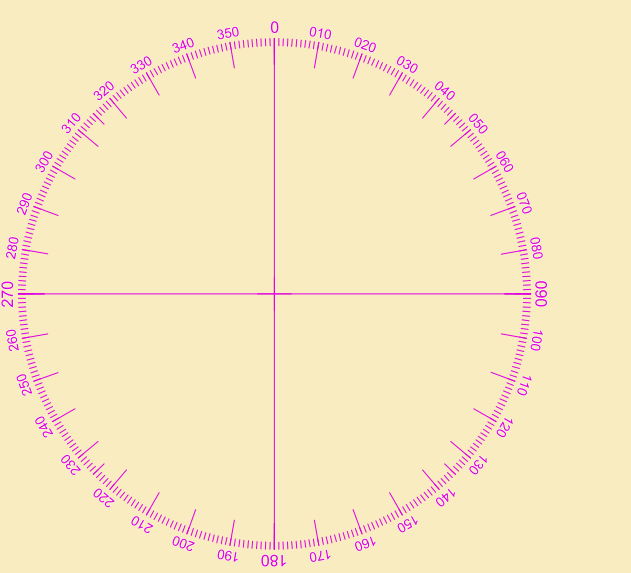
**POSITIONS**  
Positions are referred to OSGB36 National Grid Datum.

**TOPOGRAPHY**  
The shore features on this chart are based largely on Ordnance Survey digital mapping data with permission of HMSO. © Crown Copyright 2025. Peel Licence Number 100018033.

**NARROW CHANNEL / BERTH LIMITS**  
The black pecked lines indicate the berth limits of Ardrossan Harbour and the pink pecked lines indicate the limits of the narrow channel approaches to Ardrossan Harbour.

**OBSTRUCTIONS/WRECKS**  
Black Dashed Rings indicate obstructions or wrecks on the riverbed.  
Shown by:

○ Obsn ○ WK



Surveyed by: CSL & Aspect Surveys  
Processed by: CSL & Aspect Surveys  
Checked by: WLH  
Surveyed: 30th September 2024 & 20th March 2025  
Issued: 2nd April 2025