

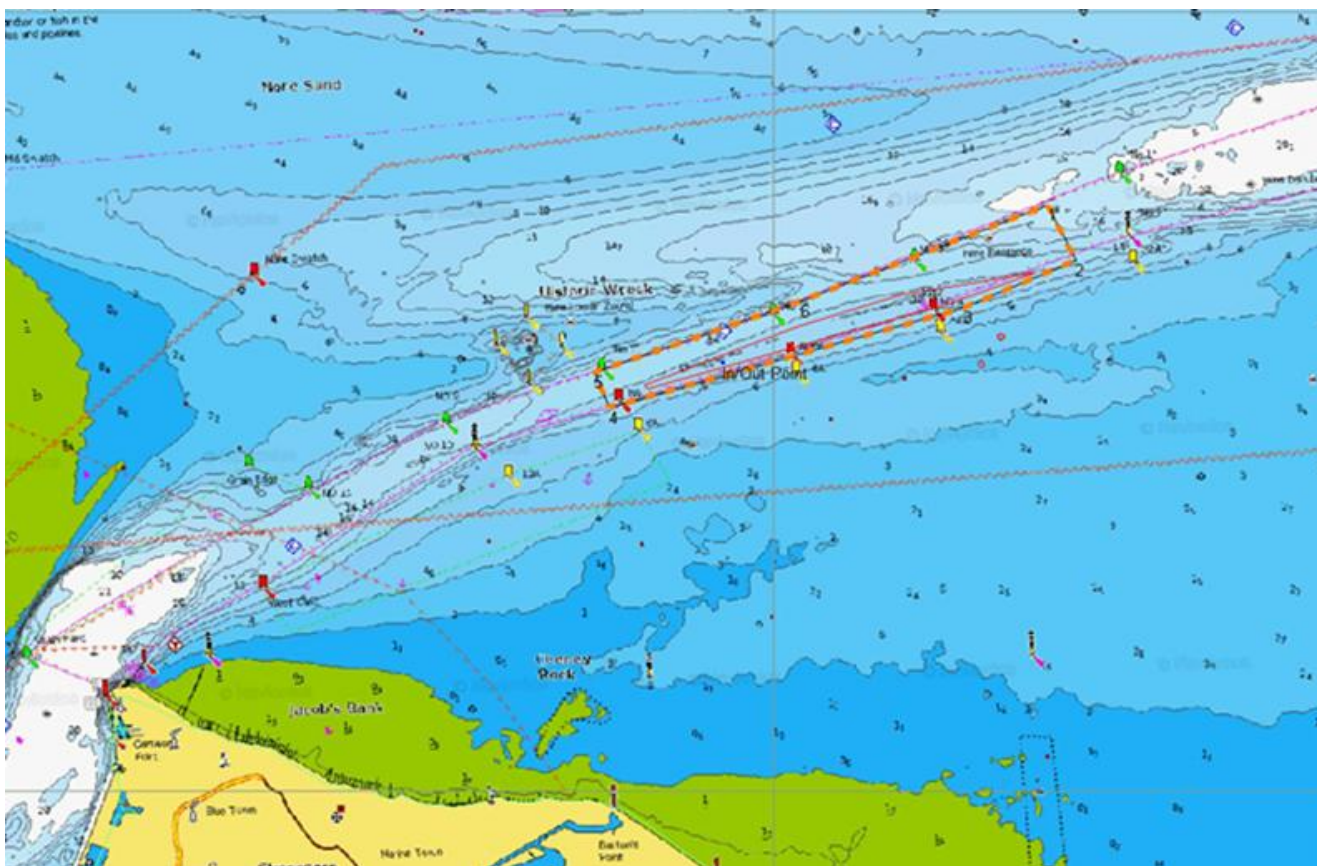
## NtoM 27 - 2026

### Medway Approach Channel and Sheerness Harbour - Dredging Operations

NOTICE IS HEREBY GIVEN that dredging operations are due to take place in the Medway approach channel (MAC) and within Sheerness Harbour, dredging is due to commence on or around 28<sup>th</sup> of May 2026 with completion expected by 6<sup>th</sup> June 2026. Dredging in the Medway approach channel will be carried out over the ebb tide periods whilst Sheerness berths will be dredged in between as and when vessel movements and berth availability allow. All dredging will be carried by the water injection dredger (WID) “Maas” who will maintain a listening watch on VHF Channel 74 at all times and display the required signals for respective operations by day and night.

**All vessels transiting the Medway approach channel and arriving/departing Sheerness Harbour during the dredging period are requested to navigate with caution reducing speed and wash accordingly.**

Approximate MAC Dredge Area



Issued on behalf of Port of Sheerness Ltd, the Statutory Harbour Authority for the River Medway and The Swale  
Telephone calls, VHF radio traffic, CCTV and radar traffic images may be recorded at  
the Peel Ports Group Port Control Centre, Liverpool.



Admiralty Chart : 3683 refers

Further information may be obtained from Medway VTS on VHF Channel 74, call sign "Medway VTS" or telephone 0151 949 6148 or 0151 949 6650 (**Recorded Lines**)

**Marine Operations Department**  
**Peel Ports London Medway**

Notice Issue:	26 <sup>th</sup> May 2026
Notice Expiry:	7 <sup>th</sup> June 2026