

# Inchgreen Marine Park

## Fit for the future

[peelports.com](https://peelports.com)

Inverclyde  
council

Peel Ports Group  
**More Than Ports**





# Welcome to Inchgreen Marine Park

Situated along the River Clyde, this multi-modal port offers road and sea access, making it an ideal location for your business.

In a joint venture with Inverclyde Council, we have recently invested £10 million to enhance our facilities and infrastructure. This significant upgrade ensures a modern port experience tailored to meet your needs.

**£10 million** invested  
to enhance facilities  
and infrastructure



# Ready for business

## Enhanced Access & Security

- Renovated entrance, new roads, and lighting
- 24/7 security with controlled access
- New fencing and CCTV network

## Upgraded Utilities & Connectivity

- New HV / LV Electrical Supply
- CAT 5 Protected water supply to dockside hydrants

## Expanded Development Opportunities

- Cleared space
- Customisable plots ready for your operation

## Improved Maritime Facilities

- Reinforced quay walls
- Increased 8.5m dredge depth for larger vessels
- Efficient dockside services





## Strategic location

Situated on the River Clyde's south bank, Inchgreen Marine Park offers prime positioning just 1.8 miles from the Port of Greenock. Our multimodal connections—road, rail, air, and deep water—ensure your supply chain flows uninterrupted.

<b>Road</b>	Easy access to A8, M8, A78, M77, M74, M73
<b>Rail</b>	Local rail access connecting to Glasgow
<b>Air</b>	Proximity to Glasgow International (15 miles), Glasgow Prestwick (39 miles)
<b>Water</b>	Direct access to deep-water channel in Firth of Clyde



# A world of opportunity

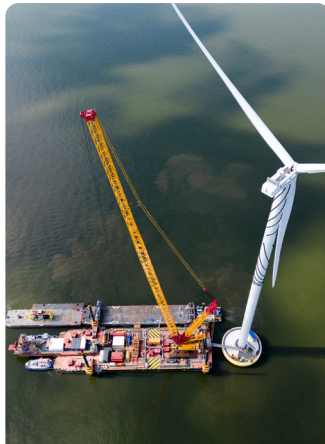
Inchgreen Marine Park

Inchgreen Park presents exceptional development potential. Home to one of Europe's largest dry docks, this prime site features a repair quay and expansive developable land. Its strategic location and existing maritime infrastructure make it an ideal hub for industrial, commercial, or mixed-use projects.

**We are well-equipped to support your operations in:**



**Port related activities**



**Supporting the offshore sector**



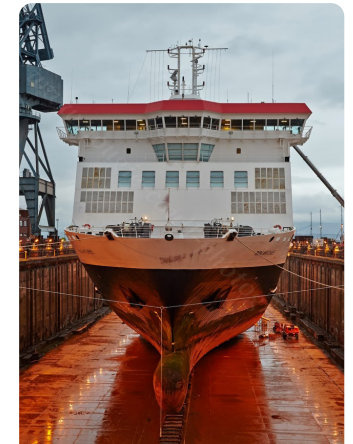
**Vessel mobilisation & demobilisation**



**Project cargo**



**Marine construction or ship repair**



**Vessel decommissioning**





Image: Peel Ports Inchgreen Marine Park

# Marine facilities

Set on a 34-acre site, the Park includes one of Europe's largest dry docks and a repair quay.

The dry dock serves multiple purposes:

- **Civil construction**
- **Ship building or repair**
- **Decommissioning**

Inchgreen Marine Park can also function as a marine support hub to provide support services for the marine industry, with ships and barges able to use the 390m repair quayside and the extensive area adjacent to the quayside.



# Size and infrastructure

Inchgreen Marine Park

- 1 Dry Dock:** The Inchgreen dry dock is one of the largest in Europe, measuring 305 meters long by 45 meters wide with a 13.7 meter depth over keel blocks. This dry dock provides a secure working environment for projects year-round.
- 2 Secure Main Entrance:** The Marine Park also has newly fitted powered access gates, supported by 24 hour security, new fencing and upgraded road access.
- 3 Wet Stack Areas:** The park features sizeable wet stack areas, well-suited for assembling and storing components for floating wind farm projects.
- 4 Development Land:** Inchgreen Marine Park offers up to 31 acres of land available for future development and marine-related activities.

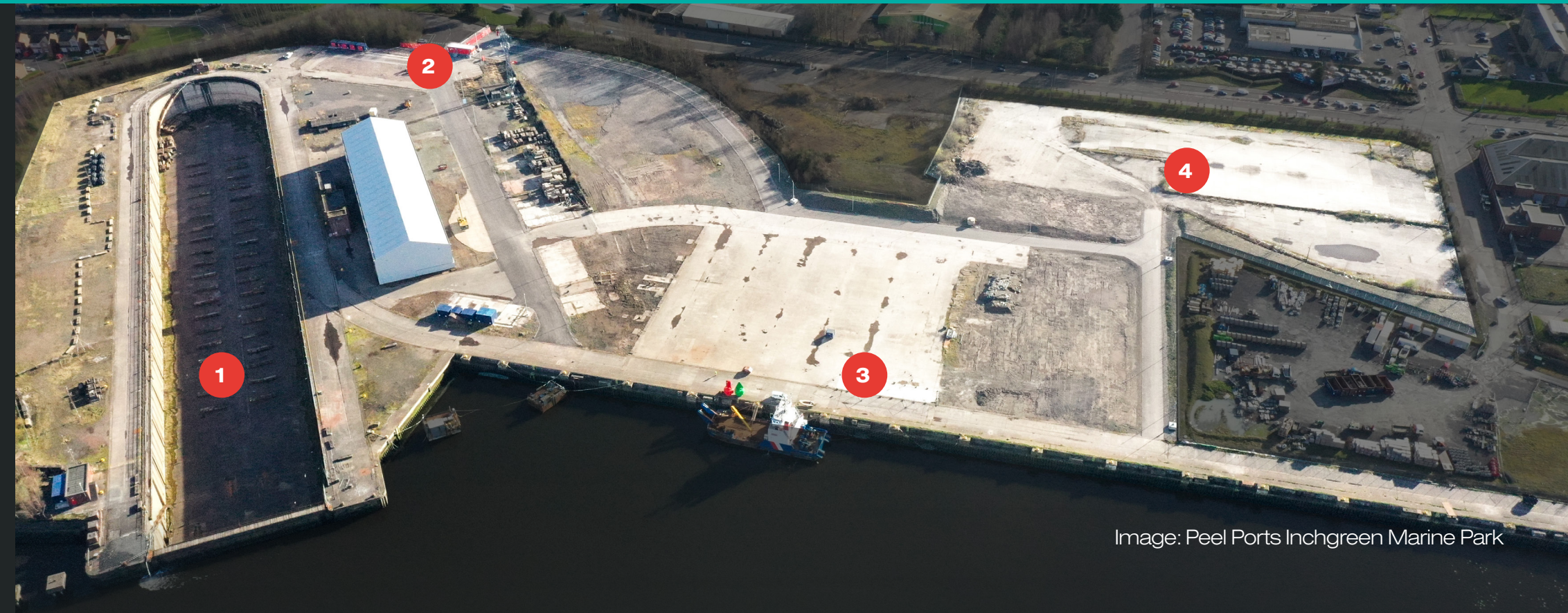



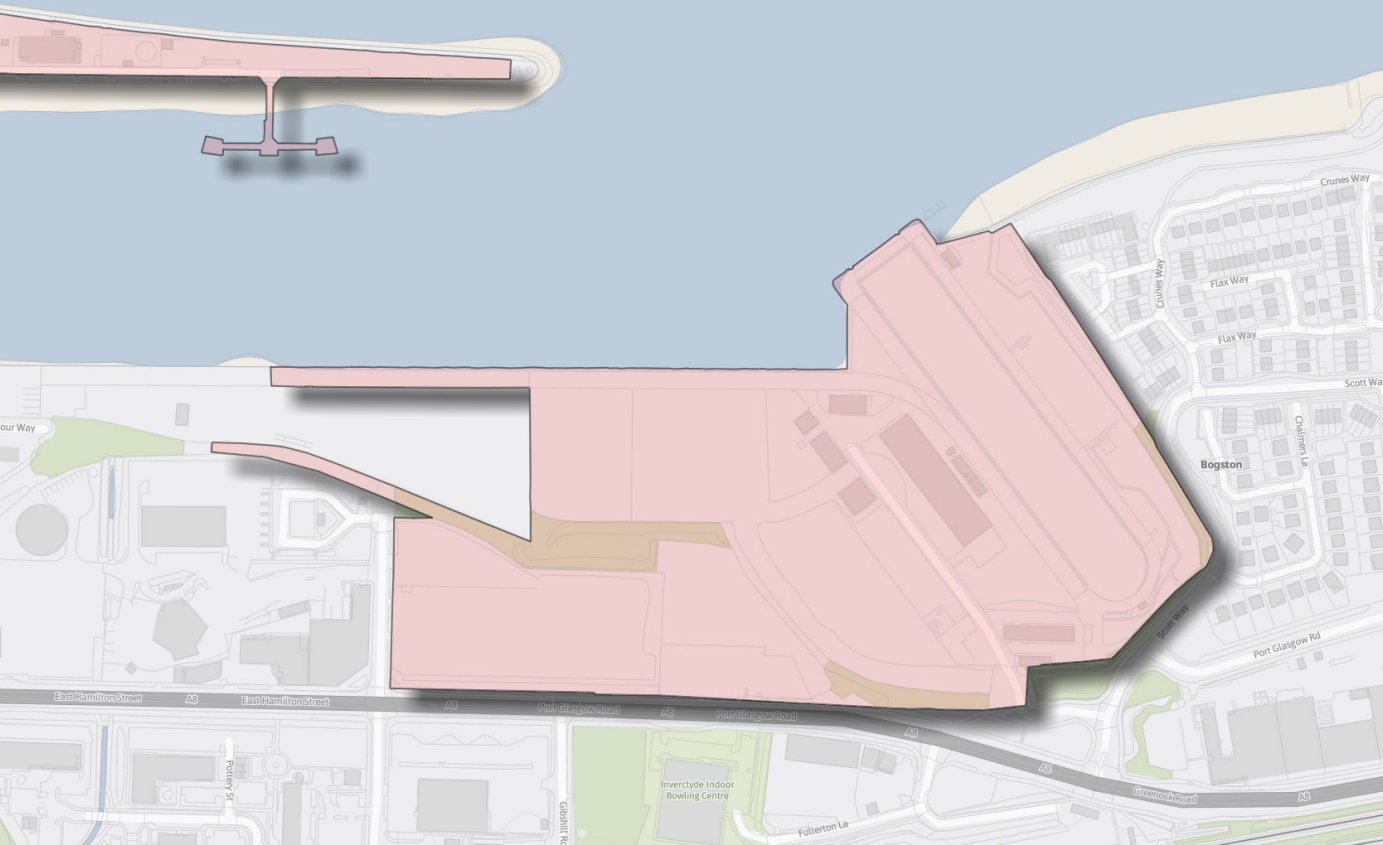
Image: Peel Ports Inchgreen Marine Park



# Marine Park

## Site Plan

 Available space



Inchgreen Marine Park

## Facts and figures

### Total Area

34 acres with potential to expand to 40-acres

### Dry Dock

305m long x 45m wide

### Repair Quay

390m long with 8.5m water depth

### Warehousing

28,000 sq ft

### Access to Labour

Strathclyde region has a population of 2.5m

### Uses

Ship Repair, Marine Construction, Offshore Decommissioning, Wind Farm Assembly and Support



# Renewable energy solutions

Inchgreen Marine Park

Perfectly equipped for large-scale renewable energy projects, Inchgreen Marine Park offers unparalleled capabilities for the commercial fabrication of floating wind farm assets.

From the assembly of floating substructures to the staging of huge wind turbine components, our state-of-the-art facilities provide an ideal environment for bringing energy solutions to life.



Image: Peel Ports Clydeport - King George V Dock



# Versatile warehouse space, tailored to your needs

Inchgreen Marine Park

At Inchgreen Marine Park, we provide a versatile 28,000 sq. ft. warehouse space that can be utilised for storage, assembly, or a wide range of project purposes. Our flexible lease terms allow you to tailor your rental arrangements to align perfectly with your specific business needs and project timelines.

Whether you require short-term or long-term solutions, our approach ensures you have the ideal workspace to support your operations efficiently.





# Layup Flexibility

Inchgreen Marine Park

Adjacent to our main facilities lies the layup quay, providing additional capacity for secure vessel storage.

For even more flexibility, take advantage of nearby locations like Loch Striven and Firth of Clyde anchorages. These areas offer extra lay-up space to accommodate your marine assets.





# Get in touch today

[Marketing@PeelPorts.com](mailto:Marketing@PeelPorts.com)

---



**Fraser Houston**

Head of Sales  
Peel Ports Clydeport  
[fraser.houston@peelports.com](mailto:fraser.houston@peelports.com)  
+44 (0)7769 885944



**James McSporran**

Port Director  
Peel Ports Clydeport  
[james.mcsporrان@peelports.com](mailto:james.mcsporrان@peelports.com)  
+44 (0)141 445 7412



**Craig Donald**

Senior Surveyor  
Peel Ports Clydeport  
[craig.donald@peelports.com](mailto:craig.donald@peelports.com)  
+44 (0)141 241 8503

**Thank you**



Peel Ports  
**More Than Ports**