

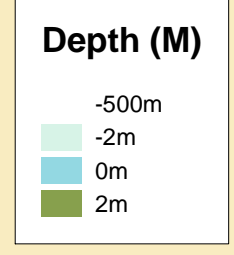
MERSEY DOCKS AND HARBOUR COMPANY LTD

Gary Doyle
Group Harbour Master

Liverpool Docks
LPD008_2_2023_001
Birkenhead Docks
West Float Section

DEPTHS
Depths are in metres and are reduced to chart datum being 4.93m below Ordnance Datum (Newlyn), which is approximately the level of Lowest Astronomical Tide.

HEIGHTS
Heights are in metres. Underlined figures show heights above Chart Datum.

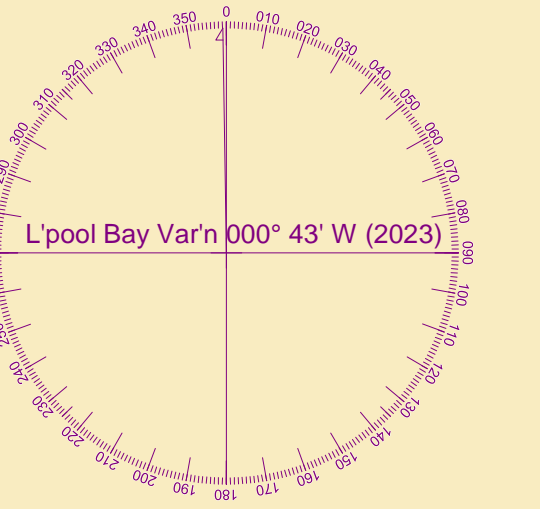


POSITIONS
Positions are referred to OSG836 National Grid Datum.

UKHO & NTMS
When using this chart please refer to UKHO Admiralty Publications and also local Notice to Mariners and Navigational Warnings.

TOPOGRAPHY
The shore features on this chart are based largely on Ordnance Survey digital mapping data with permission of HMSO. © Crown Copyright 2023. Peel Licence Number 100018033.

FLATS & SANDBANKS
CAUTION OWING TO FREQUENT CHANGES IN DEPTHS AND POSITIONS OF FLATS AND SANDBANKS THIS CHART SHOULD BE USED WITH CAUTION.



Surveyed by:	RK
Processed by:	RK
Checked by:	RK
Surveyed:	10th January 2023
Issued:	13th January 2023

SCALE 1:1250 at A0

