



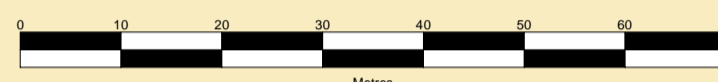
PORT OF SHEERNESS LIMITED

Gary Doyle
Group Harbour Master

River Medway

**1502-1-22-001
KINGSNORTH JETTY**

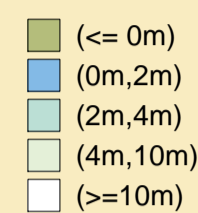
SCALE 1:750 at A1



DEPTHS
Depths are in metres and are reduced to chart datum using 2.80m for Chatham and 2.90m for Sheerness below OD(N), with linear interpolation along channel centre line.

HEIGHTS
Heights are in metres. Underlined figures show heights in meters above Chart Datum.

DEPTH COLOUR TABLE

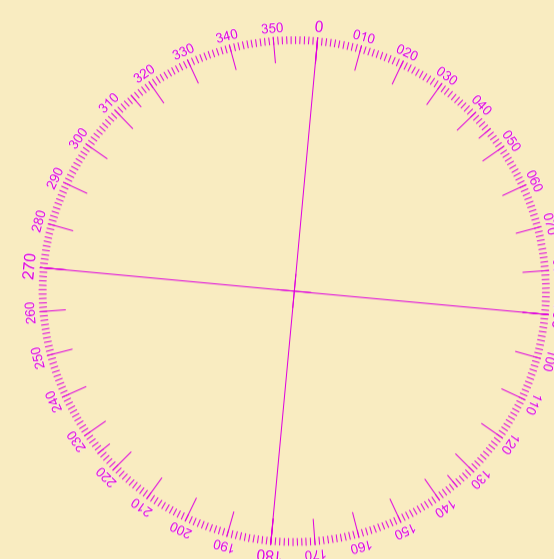


POSITIONS
Positions are referred to OSGB36 National Grid Datum.

BERTH LIMITS
The pecked lines indicate the berth limits of jetty 6,7 & Thamesport on the 'Isle of Grain'.

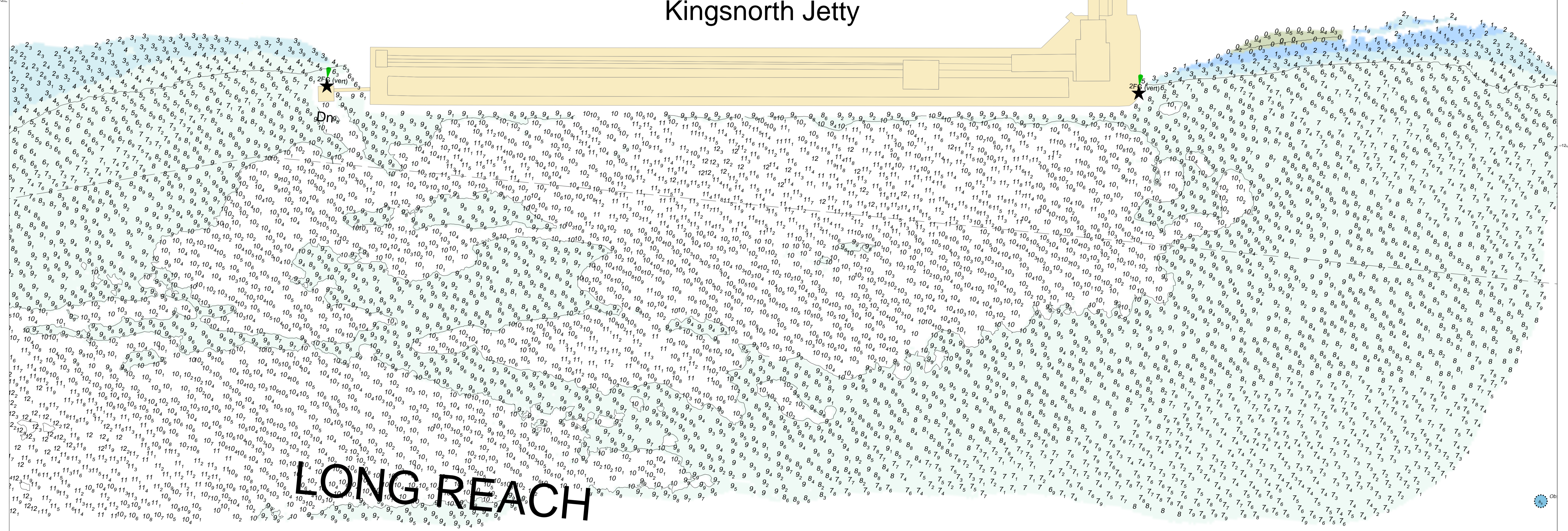
NOTES
While every care has been taken in the preparation of the information relating to the soundings shown on this chart, **PEEL PORTS MEDWAY make no warranty as to the accuracy and will not accept any responsibility whatsoever arising from errors and omissions or for any consequence arising therefrom.**

TOPOGRAPHY
The shore features on this chart are based largely on Ordnance Survey digital mapping data with permission of HMSO. © Crown Copyright 2022. Peel Licence Number 100018033.



Surveyed by: WLH & NM
Processed by: WLH
Checked by: WLH
Surveyed: 28th June 2022
Issued: 6th July 2022

Kingsnorth Jetty



LONG REACH