

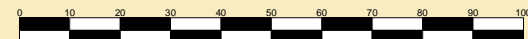


GREAT YARMOUTH PORT COMPANY

GARY DOYLE
Group Harbour Master
River Yare

GYA001_1_2019_003
PORT ENTRANCE
TO BRUSH BEND

SCALE 1:1500 at A3



DEPTHS
Depths are in metres and are reduced to chart datum being 1.56m below OD(N), which is approximately the level of the Lowest Astronomical Tide.

HEIGHTS
Heights are in metres.
Underlined figures show heights above Chart Datum.

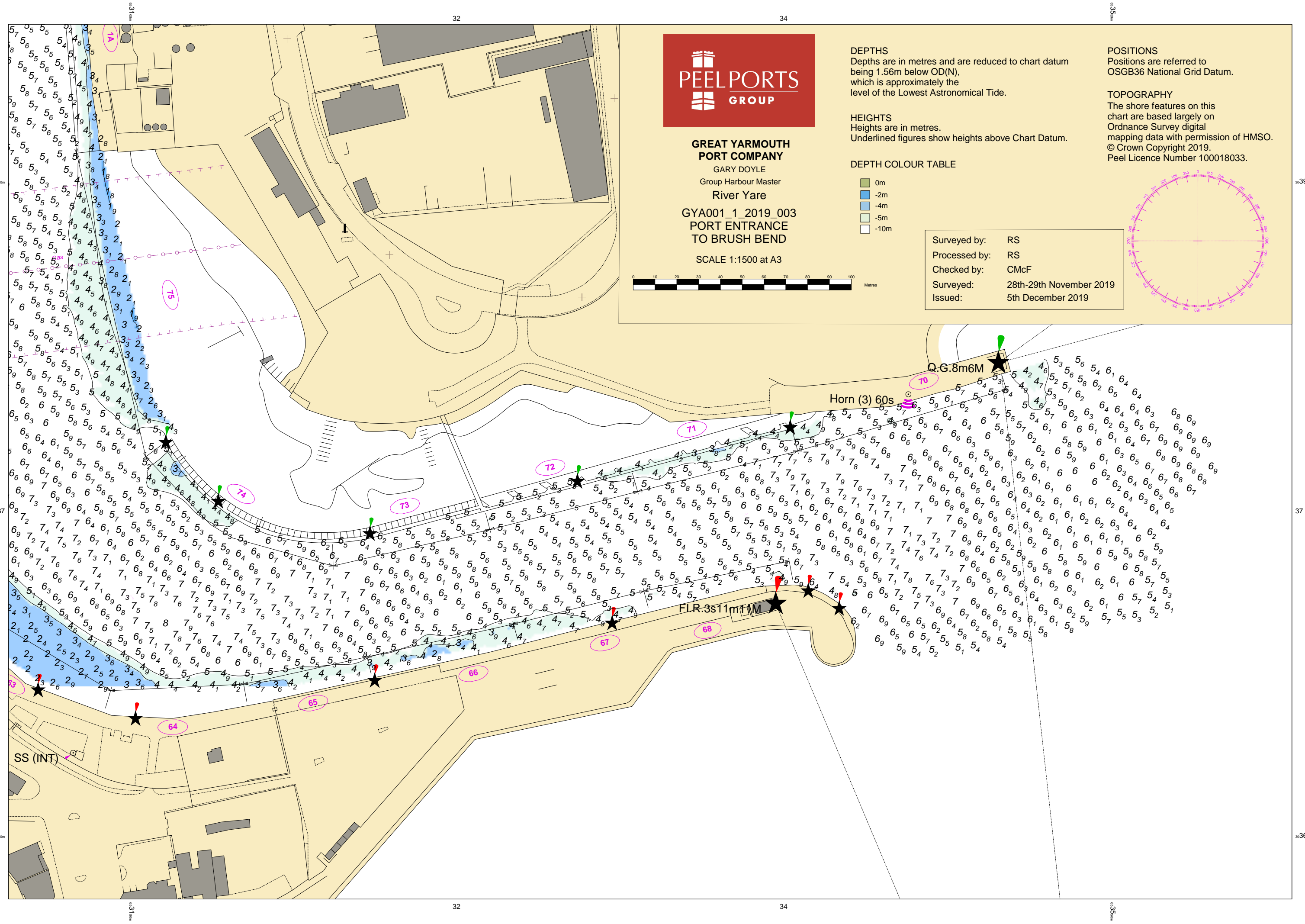
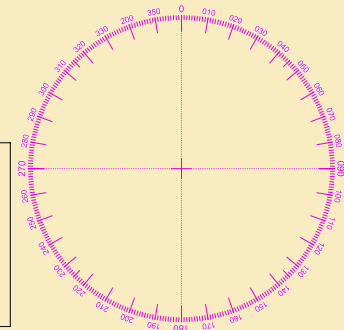
DEPTH COLOUR TABLE

0m
-2m
-4m
-5m
-10m

POSITIONS
Positions are referred to OSGB36 National Grid Datum.

TOPOGRAPHY
The shore features on this chart are based largely on Ordnance Survey digital mapping data with permission of HMSO. © Crown Copyright 2019. Peel Licence Number 100018033.

Surveyed by:	RS
Processed by:	RS
Checked by:	CMcF
Surveyed:	28th-29th November 2019
Issued:	5th December 2019



33900m

33900m

37

37

33600m

33600m

3100m

3100m