



NOTICE TO MARINERS

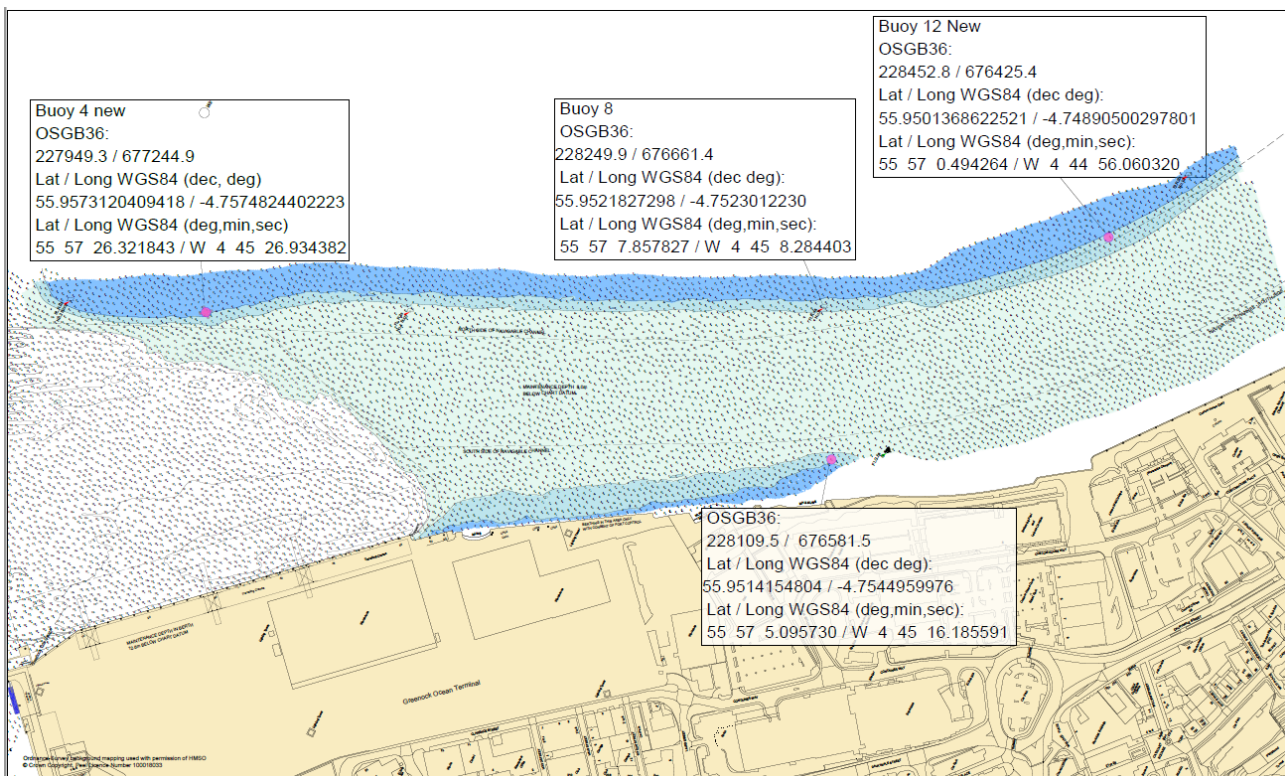
No 70/19 (REF CNTMs 61/19 and 69/19)

FIRTH OF CLYDE – GREENOCK OCEAN TERMINAL

RELOCATION OF LATERAL MARKS

Chart 1994

Mariners are advised that the following lateral marks have now been relocated following the dredging works for the new cruise berth at Greenock Ocean Terminal. These buoys are now in the following positions to clearly define the navigable channel:



A separate consultation exercise is being prepared to establish final positions for these buoys and this will be published on our website, www.peelports.com

Passing vessels are reminded to navigate this area with particular caution leaving a wide berth.

Estuary Radio may be contacted on VHF 12 or on ☎ 0151 949 6651.