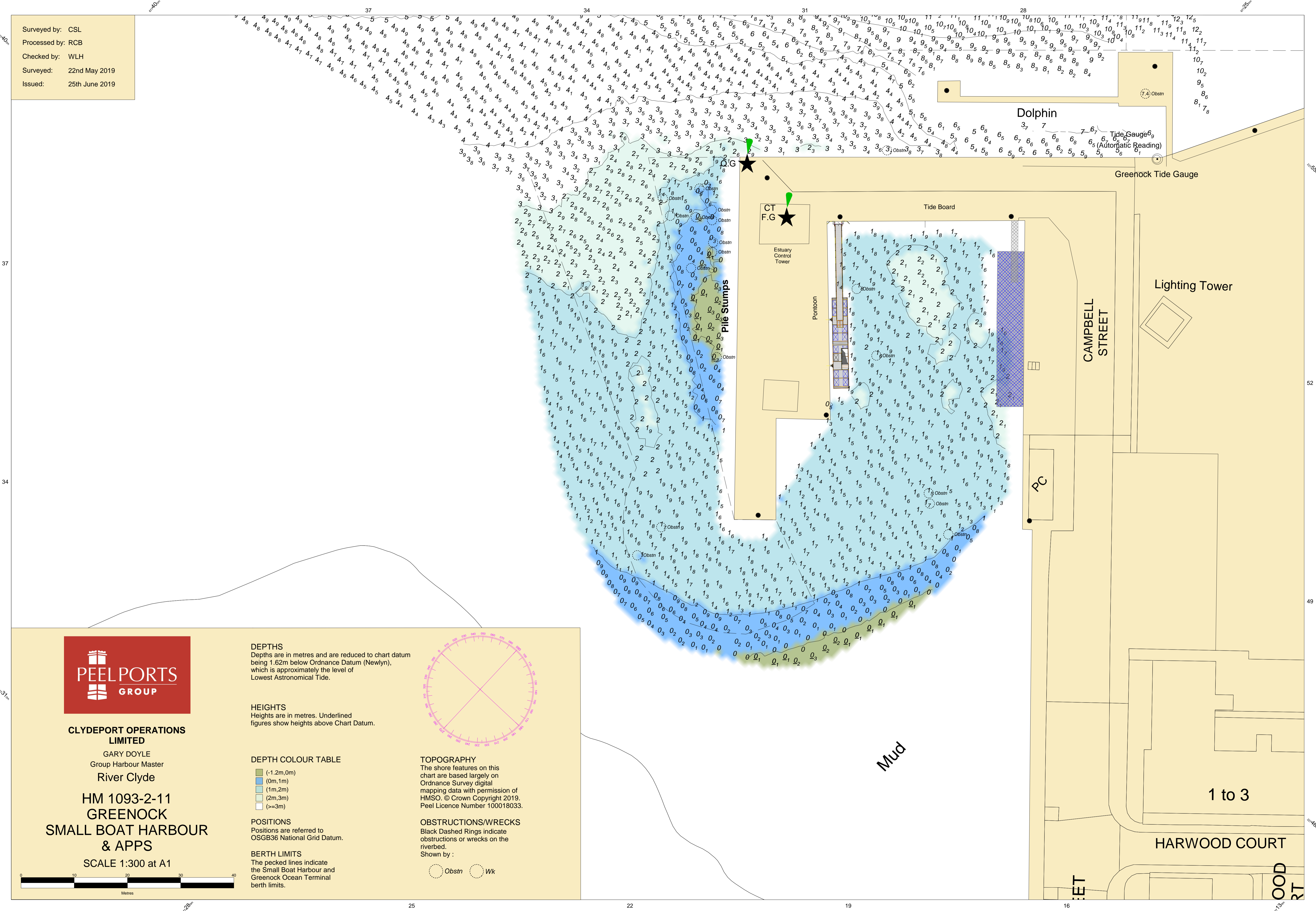


Surveyed by: CSL
 Processed by: RCB
 Checked by: WLH
 Surveyed: 22nd May 2019
 Issued: 25th June 2019

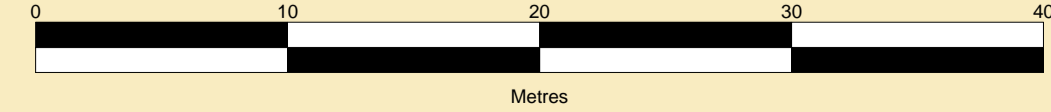


CLYDEPORT OPERATIONS LIMITED

GARY DOYLE
Group Harbour Master

HM 1093-2-11
**GREENOCK
 SMALL BOAT HARBOUR
 & APPS**

SCALE 1:300 at A1



DEPTHS
Depths are in metres and are reduced to chart datum being 1.62m below Ordnance Datum (Newlyn), which is approximately the level of Lowest Astronomical Tide.

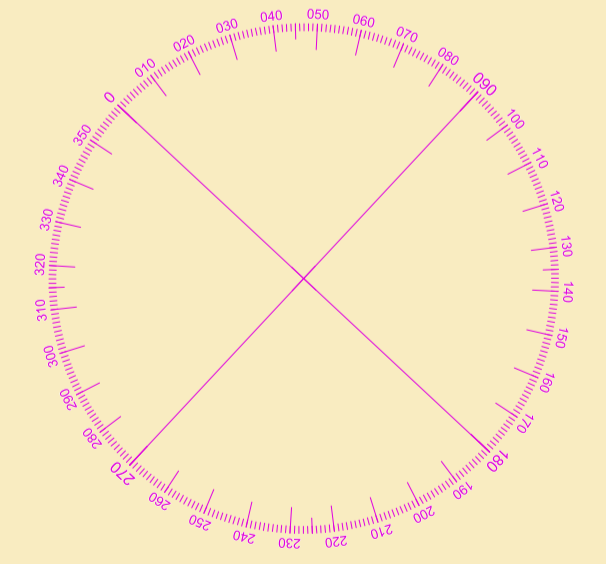
HEIGHTS
Heights are in metres. Underlined figures show heights above Chart Datum.

DEPTH COLOUR TABLE

Light Blue	(-1.2m,0m)
Blue	(0m,1m)
Light Green	(1m,2m)
Green	(2m,3m)
Dark Green	(>=3m)

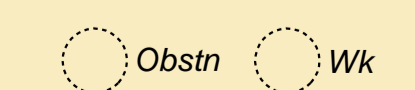
POSITIONS
Positions are referred to OSGB36 National Grid Datum.

BERTH LIMITS
The pecked lines indicate the Small Boat Harbour and Greenock Ocean Terminal berth limits.



TOPOGRAPHY
The shore features on this chart are based largely on Ordnance Survey digital mapping data with permission of HMSO. © Crown Copyright 2019. Peel Licence Number 100018033.

OBSTRUCTIONS/WRECKS
Black Dashed Rings indicate obstructions or wrecks on the riverbed.
Shown by :



37

34

27

25

22

19

16

52

49

46

25