

NOTICE TO MARINERS – No. 09 2019

PORT OF GREAT YARMOUTH

Diving Operations at Berth 31 (Bollard Quay)

MARINERS ARE HEREBY ADVISED that an extensive programme of repair works will be conducted on the sheet piled quay wall at Berth 31 within the Great Yarmouth River Port commencing on Monday 15th July 2019 for approximately 80 days. The works will be undertaken by Red7 Inshore Diving Ltd. The Dive Supervisor will maintain a listening watch on Ch12, callsign 'RED7 DIVERS' whilst operations are taking place.

During the course of the works divers will be working at various locations along the full length of Berth 31 using underwater tools and equipment. The International Code flag 'A' will be exhibited when dive operations are taking place and red flags will be exhibited marking the extremities of the works.

Masters must obtain information from Yarmouth Radio on VHF Channel 12 before navigating past Berth 31, and before any movement or operation of engines or thrusters close to or adjacent to these berths.

Masters are advised to exercise extreme caution when approaching or passing the dive site, to keep well clear of the works area and to pass at the slowest safe manoeuvring speed. Swinging of vessels will not be permitted anywhere within the works area mentioned above.

Please see chart extract in figure 1 overleaf showing the extent of the dive area.

For further information please contact Great Yarmouth LPS on VHF Ch12, callsign 'Yarmouth Radio', or telephone 01493 335511.

On behalf of **Harbour Master**

24th June 2019

**Great Yarmouth Port Company
Limited**

Vanguard House
South Beach Parade
NR30 3GY

T : +44 (0)1493 335500
F : +44 (0)1493 857120
E : gyinfo@peelports.co.uk
W : www.peelports.co.uk

NOT TO BE USED FOR NAVIGATION

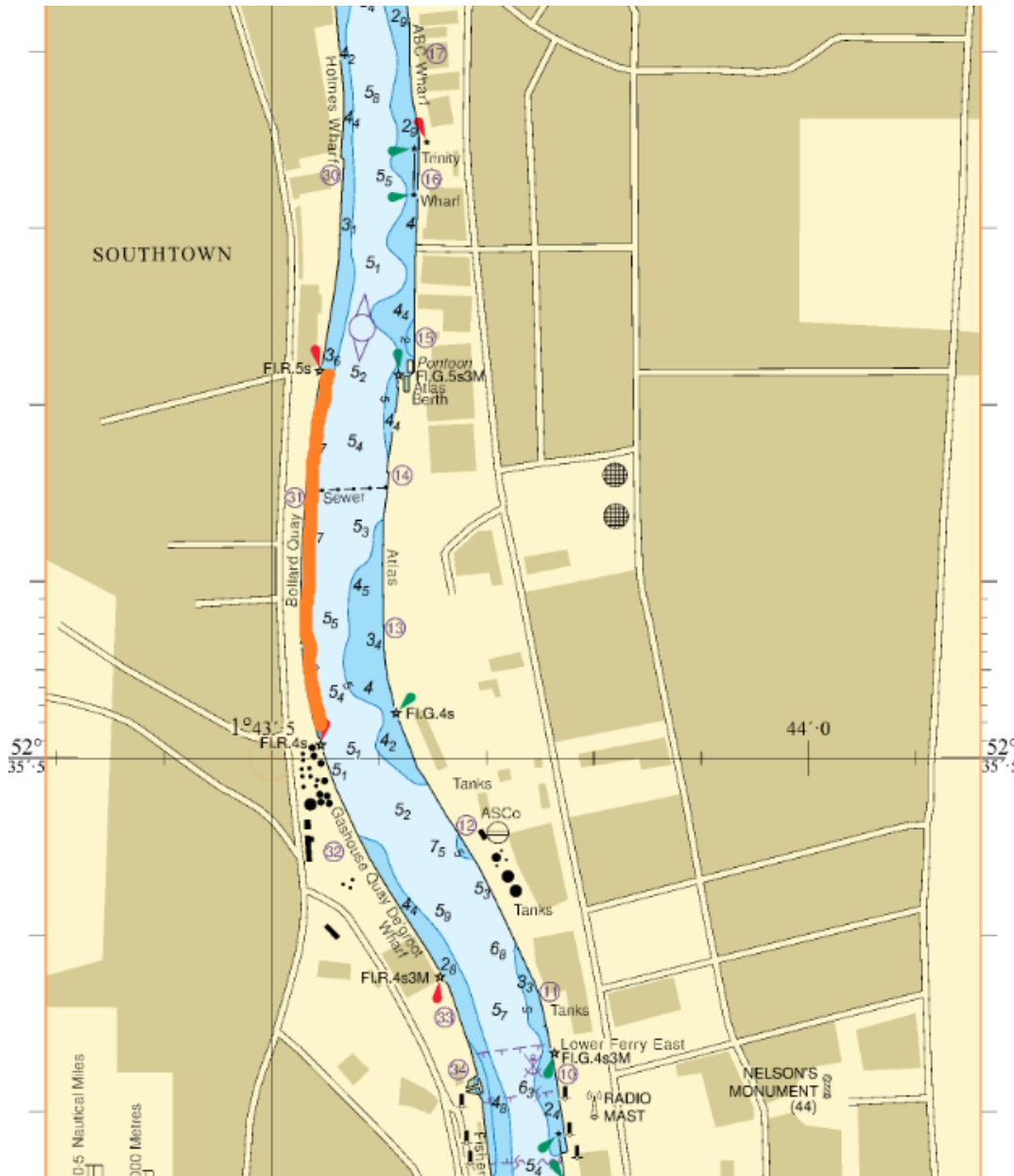


Fig. 1 – Extent of dive site marked in orange.

NOT TO BE USED FOR NAVIGATION

Great Yarmouth Port Company Limited

Vanguard House
South Beach Parade
NR30 3GY

T : +44 (0)1493 335500
F : +44 (0)1493 857120
E : gyinfo@peelports.co.uk
W : www.peelports.co.uk

