



**NOTICE TO MARINERS**

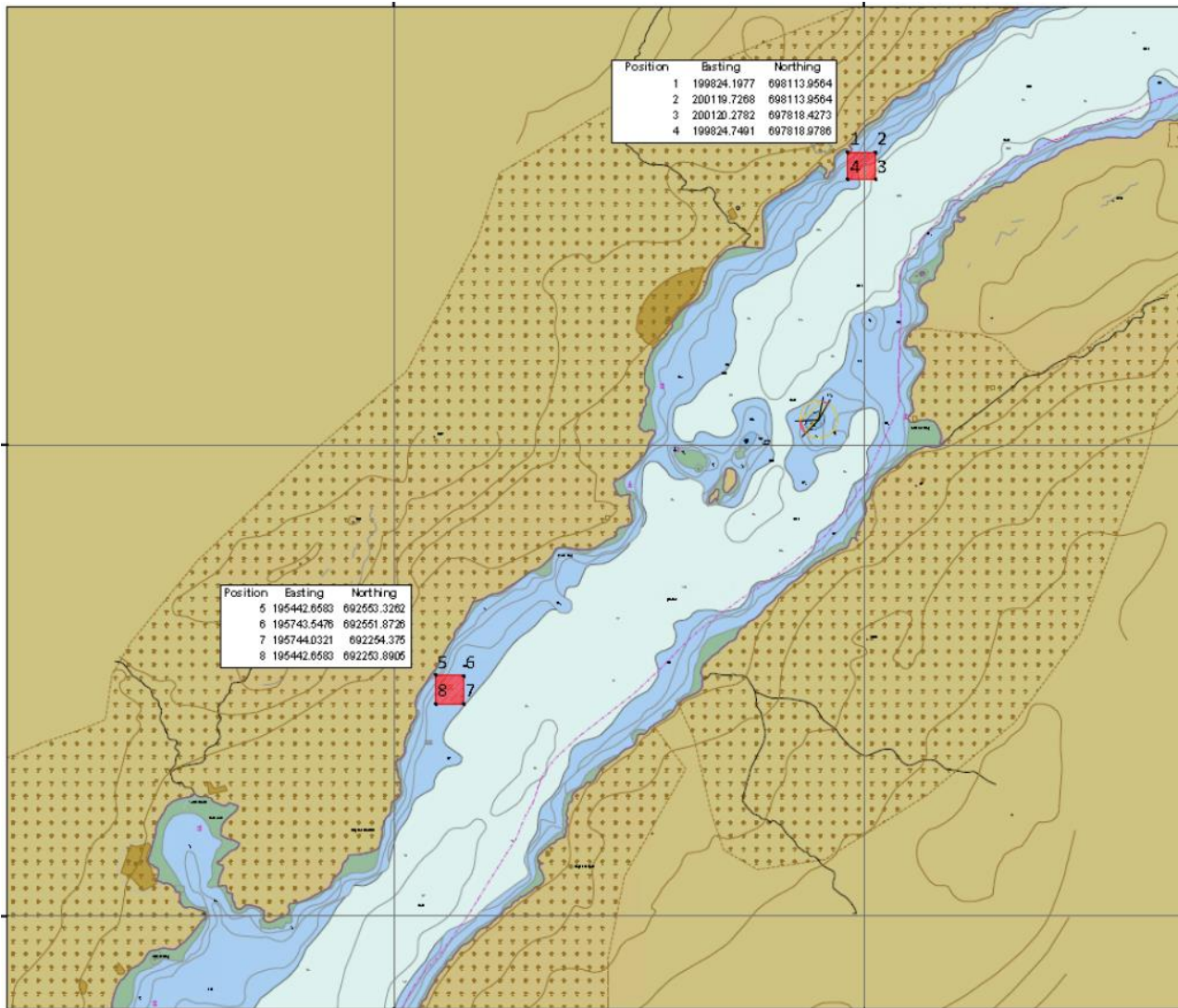
**No 57/19**

**UPPER LOCH FYNE**

**HYDROGRAPHIC SURVEY EQUIPMENT (REF CNTM 37/19)**

**Chart 2382**

Mariners are advised that hydrographic survey equipment remains deployed in Upper Loch Fyne in the vicinity of Crarae Pt and Rughan Cairich, and will be in place until approximately 30<sup>th</sup> September 2019. The survey areas are indicated on the chart extract below:





The vessel MV CLARE ANNE will conduct the works and will maintain a listening watch on VHF 12 and 16. The location of the survey equipment will be marked by 2 yellow surface buoys marked SURVEY.



The vessel may be restricted in her ability to manoeuvre during survey operations and will display the prescribed shapes and lights.

Mariners should navigate with caution when transiting this area.

Estuary Radio may be contacted on VHF12 or ☎ 0151 949 6651.