



## NOTICE TO MARINERS

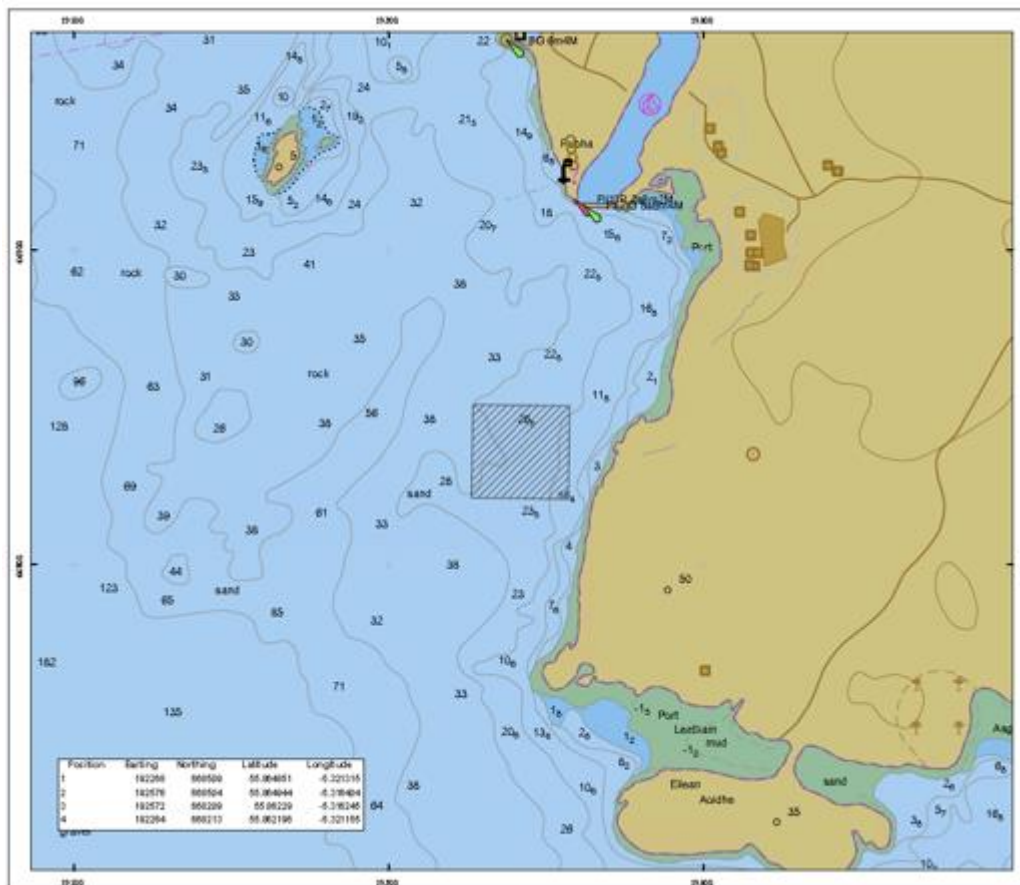
No 56/19

### LOCH FYNE

### HYDROGRAPHIC SURVEY WORKS

Chart 2381

Mariners are advised that hydrographic survey works will take place in the vicinity of Rubha Stillaig, Loch Fyne (near Portavadie) from 24<sup>th</sup> July 2019 for a period of 4 months.



Surveys will be conducted by “ERIN JULIA” who will display all appropriate shapes and lights maintain a listening watch on VHF Ch12. The vessel may be restricted in ability to manoeuvre during survey operations and mariners are requested to navigation with caution, with consideration to the effects of wash.

Rufus Redman, Interim Senior Manager Marine Operations  
Peel Ports Clydeport, Marine Department,  
Greenock Ocean Terminal, Patrick Street, GREENOCK, PA16 8UU  
Tel: 0151-949 6651  
Email: clydemarinemanagers@peelports.com

NTM: 56/19  
Page: 1 of 2  
Valid from: 12<sup>th</sup> July 2019  
Expiry Date: 31<sup>st</sup> December 2019



Estuary Radio may be contacted on VHF 12 or on ☎ 0151 949 6651.