

NOTICE TO MARINERS

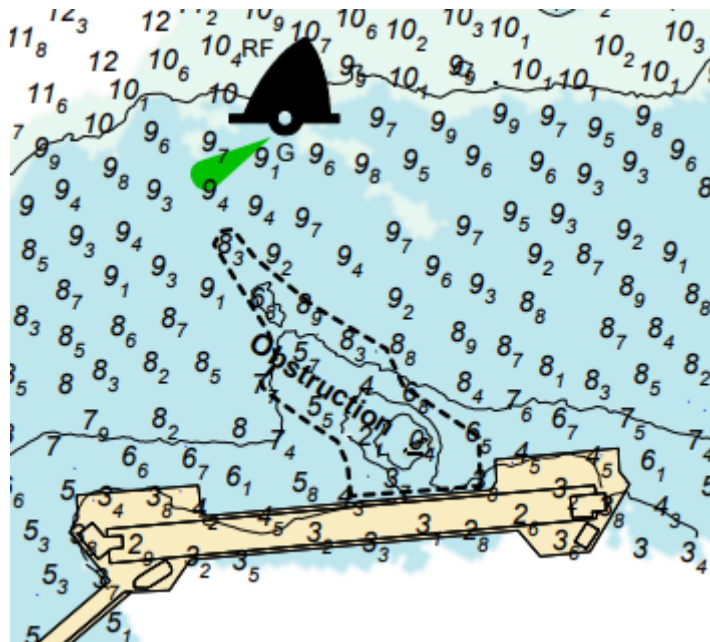
№29 - 2019

PORT OF LIVERPOOL

OBSTRUCTION OFF THE DISUSED ROCK FERRY TANKER CLEANING JETTY

NOTICE IS HEREBY GIVEN that the remains of the crane, from the disused Rock Ferry Tanker Cleaning Jetty, that collapsed into the River Mersey have been surveyed.

This obstruction lies between the east face of the jetty and RF (Rock Ferry) starboard-hand lateral mark. The surveyed (but not swept) minimum sounding of the obstruction is 0.4m above Chart Datum (1975).



Mariners are advised not to navigate, anchor or moor any vessels in way of RF lateral mark and the disused Rock Ferry Tanker Cleaning Jetty.