

## No. 20 – 2019

# RIVER MEDWAY – SALTPAN REACH - GRAIN LNG - JETTIES NOS. 8 & 10 – MAINTENANCE DREDGING.

**Notice is hereby given that:** Maintenance Dredging Works are due to take place around Grain LNG, Jetties No. 8 & 10. These will commence on or around **Wednesday 5<sup>th</sup> June 2019.**

The jetties are centred in the following approximate positions:

Terminal No.8: 51° 25.93' N 000° 42.18' E

Terminal No.10: 51° 25.94' N 000° 42.54' E

Works will be carried out by the dredger “**Maasmonde**” within the LNG Berth Exclusion Zones. She will be maintaining a listening watch on VHF Channel 3074 and displaying the appropriate shapes as required by COLREGs.

Mariners are advised to slow down, make minimum wash and maintain a listening watch on VHF Channel 74, navigating with caution and keeping well clear of the **150m exclusion zones** when passing Grain LNG Terminal (Medway Notice to Mariners 02 -2019 refers)

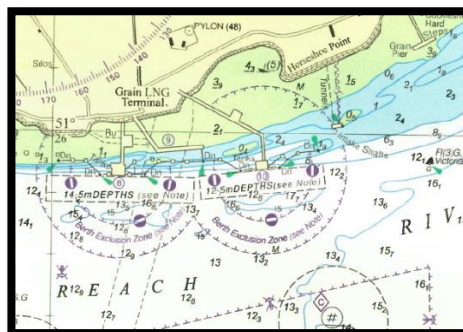


Chart **BA 1834** refers

Further information may be obtained from Medway VTS on VHF Channel 74, call sign “Medway VTS” or telephone 0151 949 6148 or 0151 949 6650.

**Marine Operations Department  
Peel Ports London Medway**

**31<sup>st</sup> May 2019**