



## NOTICE TO MARINERS

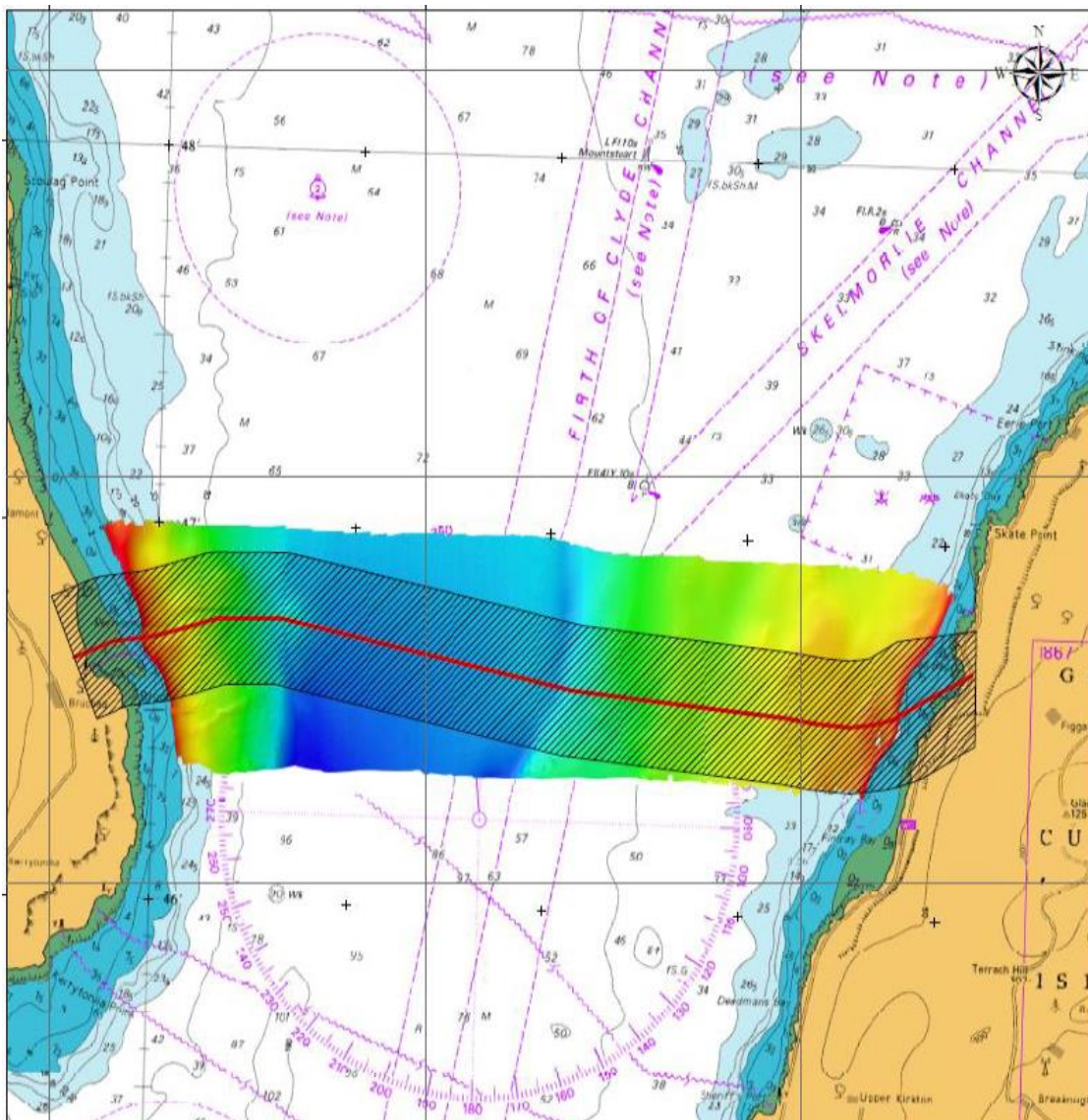
No 26/19

### FIRTH OF CLYDE

#### INSTALLATION OF SUBMARINE POWER CABLE – BUTE TO CUMBRAE

Chart 1907

Mariners are advised that works to install a new submarine power cable are scheduled to commence on Monday 4<sup>th</sup> February for a period of approximately one month. The cable will be installed between Bells Bay on Great Cumbrae Island and Kerrylamont Bay on Bute as indicated in the chart extract below.



Brian Forrest, Senior Manager Marine Operations  
Peel Ports Clydeport, Marine Department,  
Greenock Ocean Terminal, Patrick Street, GREENOCK, PA16 8UU  
Tel: 01475 726221 Fax: 01475 727006  
Email: clydemarinemanagers@peelports.com

NTM: 25/19  
Page: 1 of 4  
Valid from: 31st January 2019  
Expiry Date: 31st December 2019

The works will be conducted by the following vessels which will display appropriate shapes and lights. A listening watch will be maintained on VHF 12 and 16.

**Elektron** (Cable Lay Vessel) – 24 hour operations



**Forth Jouster** (Dive Support Vessel) – 24 hour operations



**Kingdom of Fife** (Pre-lay Grapnel Run Vessel) – 12 hour (day) operations





**Celtic Trader** (Support Vessel) – 12 hour (day) operations



**Celtic Voyager** (Support Vessel) – 12 hour (day) operations



**Celtic Navigator/Wanderer/Explorer** (Support Vessels) – 12 hour (day) operations





These works include the following activities:

- **pre-lay grapnel runs** – to ensure that debris (eg redundant cables, fishing gear etc) is cleared in advance of the cable lay. This activity will be carried out between the 10m contours by towing a set of grapnels along the cable route on the seabed.
- **boulder clearance** – carried out by divers operating a boulder grab. The FORTH JOUSTER will be stationary on spud legs during these operations which will be carried out in shallow water close to Kerrylamont Bay.
- **cable installation** – completed by ELEKTRON assisted by FORTH JOUSTER and the workboats CELTIC TRADER, CELTIC VOYAGER and two of CELTIC VOYAGER/WANDERER/EXPLORER.
- **cable burial** – completed by ELEKTRON and in shallow water assisted by FORTH JOUSTER along with support vessels. Burial operations will be supported by divers on a 12 hour (day) basis. During diving operations FORTH JOUSTER will be stationary on spud legs.

During these operations, these vessels may be restricted in their ability to manoeuvre. Mariners operating in this area are requested to maintain a distance of 500m from these vessels, reducing speed when passing to avoid effects of wash. It should also be noted that equipment may be deployed up to a distance of 250m from the operational vessels.

Estuary Radio may be contacted on VHF12 or ☎ 0151 949 6651.