



MERSEY DOCKS AND HARBOUR COMPANY LTD

Gary Doyle
Group Harbour Master

River Mersey

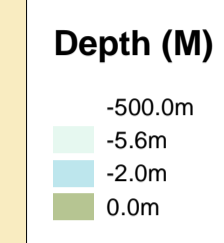
LPR001_2_2022_008

Gladstone River Entrance

Vessel: Royal Charter
Surveyed by: RK
Processed by: RK
Checked by: RK
Surveyed: 5th December 2022
Issued: 6th December 2022
Lock Surveyed: 30th November 2022

DEPTHS
Depths are in metres and are reduced to chart datum being 4.93m below Ordnance Datum (Newlyn), which is approximately the level of Lowest Astronomical Tide.

HEIGHTS
Heights are in metres. Underlined figures show heights above Chart Datum.

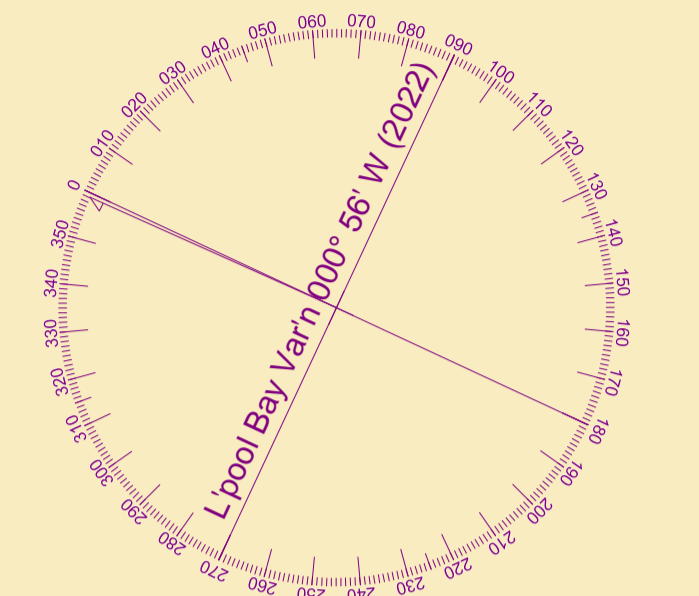


POSITIONS
Positions are referred to OSGB36 National Grid Datum.

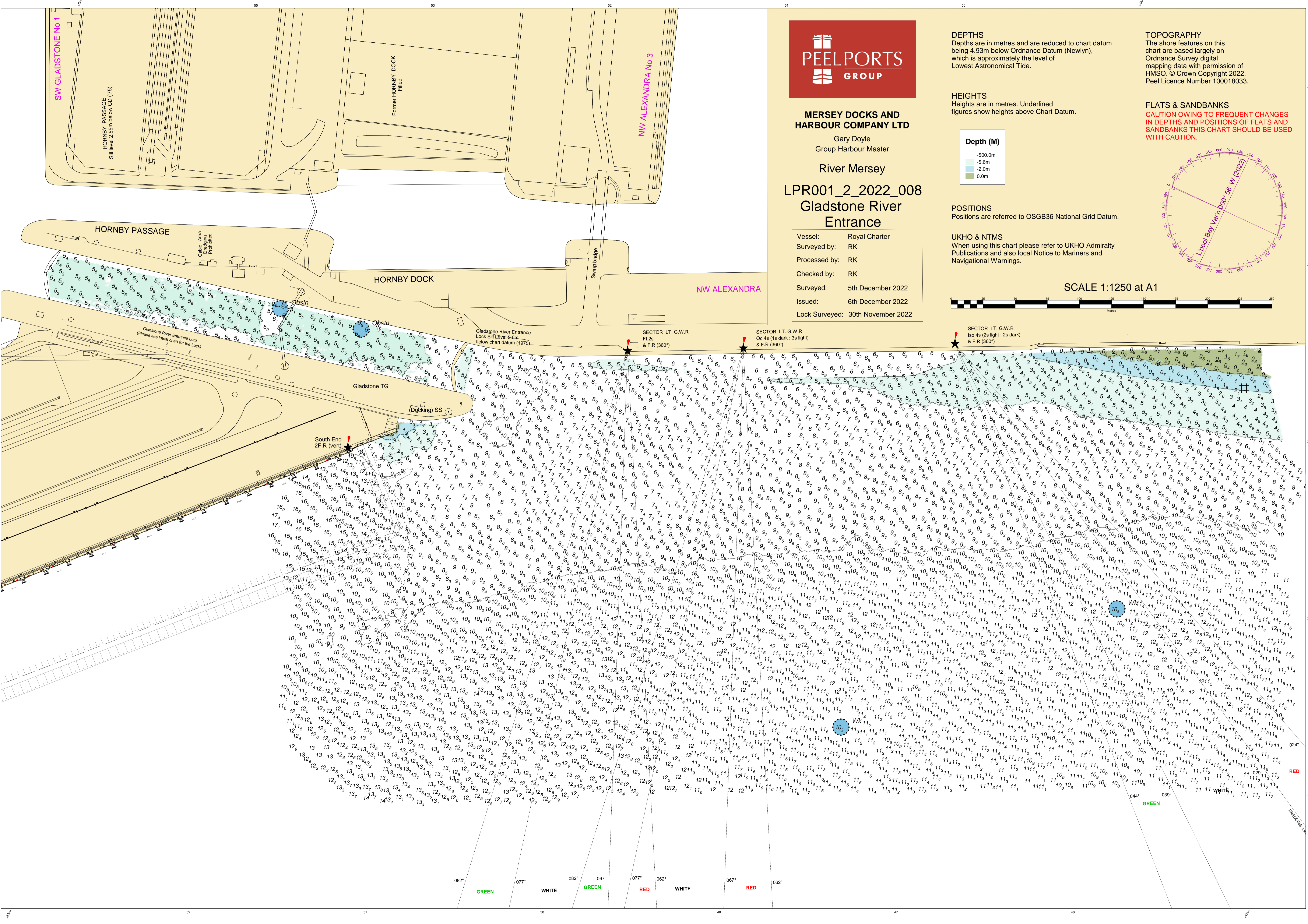
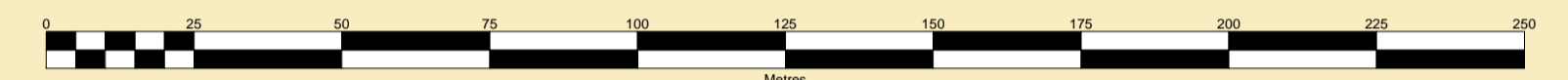
UKHO & NTMS
When using this chart please refer to UKHO Admiralty Publications and also local Notice to Mariners and Navigational Warnings.

TOPOGRAPHY
The shore features on this chart are based largely on Ordnance Survey digital mapping data with permission of HMSO. © Crown Copyright 2022. Peel Licence Number 100018033.

FLATS & SANDBANKS
CAUTION OWING TO FREQUENT CHANGES IN DEPTHS AND POSITIONS OF FLATS AND SANDBANKS THIS CHART SHOULD BE USED WITH CAUTION.



SCALE 1:1250 at A1



SW GLADSTONE No 1

NW ALEXANDRA No 3

NW ALEXANDRA

HORNBY PASSAGE

HORNBY DOCK

South End 2F.R (vert)

Gladstone River Entrance Lock Sill Level 5.6m below chart datum (1975)

SECTOR LT. G.W.R Flts & F.R (360°)

SECTOR LT. G.W.R Oc 4s (1s dark : 3s light) & F.R (360°)

SECTOR LT. G.W.R Iso 4s (2s light : 2s dark) & F.R (360°)

Gladstone TG

(Docking) SS

GREEN

WHITE

GREEN

RED

WHITE

RED

RED

GREEN

RED

WHITE

WHITE

RED