

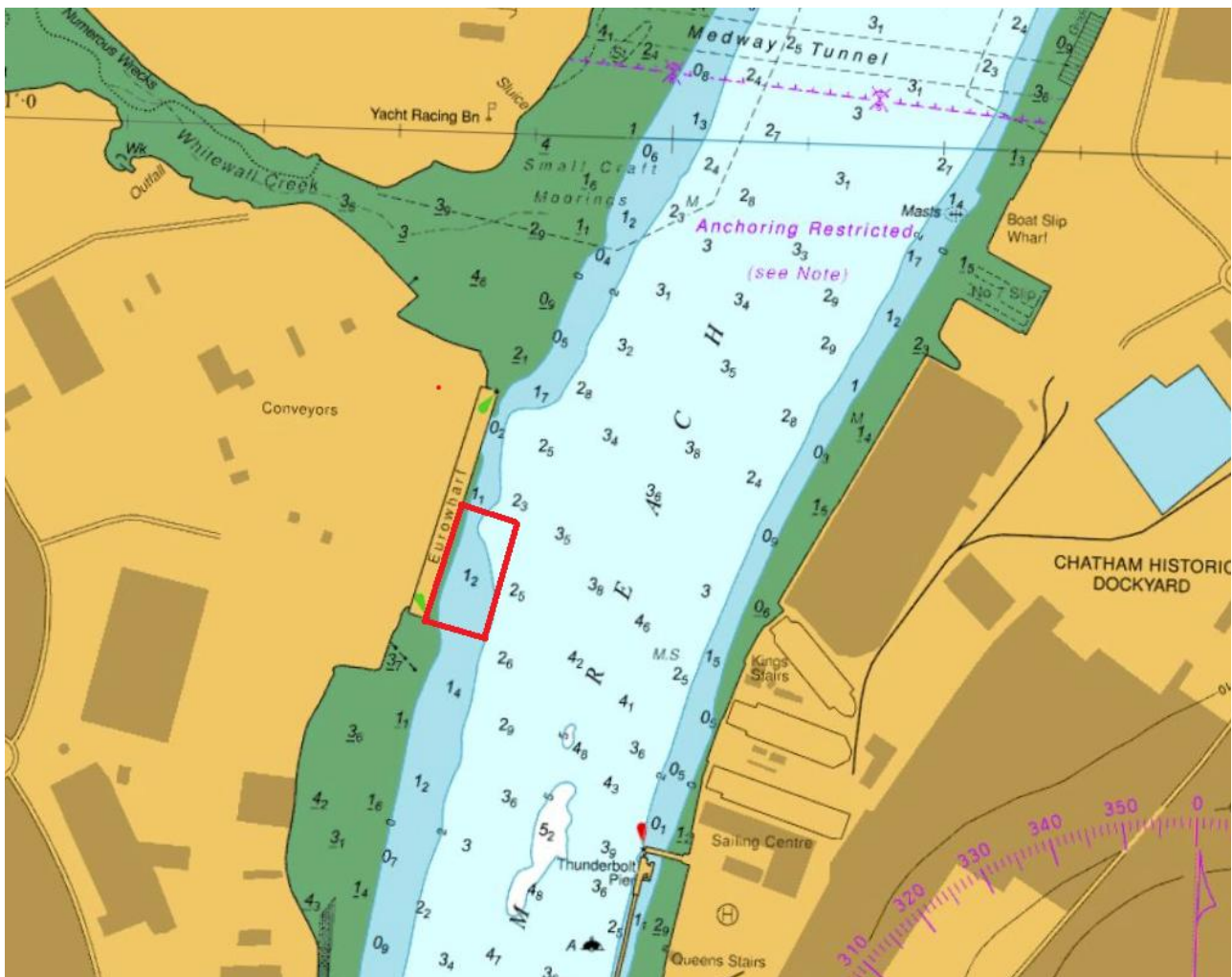
NOTICE TO MARINERS



NtoM 34 - 2025

River Medway – Chatham Reach Euro Wharf – Dredging Operations

Notice is hereby given that dredging operations will be taking place at Euro Wharf in Chatham Reach. Dredging of the berthing box area in the upper section of the wharf is due to commence 28th August 2025 with completion expected by 4th September 2025. Dredging will be carried out by the WID vessel “Melwey” who will maintain a listening watch on VHF Channel 74 at all times and display the required signals for respective operations by day and night. Dredging will be focussed in the approximate area shown below and will be carried out over ebb tide periods.



All vessels passing Euro Wharf are requested to navigate with caution, maintain a listening watch on VHF Channel 74 and reduce speed/wash accordingly.

Issued on behalf of Port of Sheerness Ltd, the Statutory Harbour Authority for the River Medway and The Swale
Telephone calls, VHF radio traffic, CCTV and radar traffic images may be recorded at
the Peel Ports Group Port Control Centre, Liverpool.

WID “Melwey”



Further information may be obtained from Medway VTS on VHF Channel 74, call sign “Medway VTS” or telephone 0151 949 6148 or 0151 949 6650. **(Recorded Lines)**

**Marine Operations Department
Peel Ports London Medway**

Notice Issued: 27th August 2025.
Notice Expiry: 5th September 2025