



NOTICE TO MARINERS

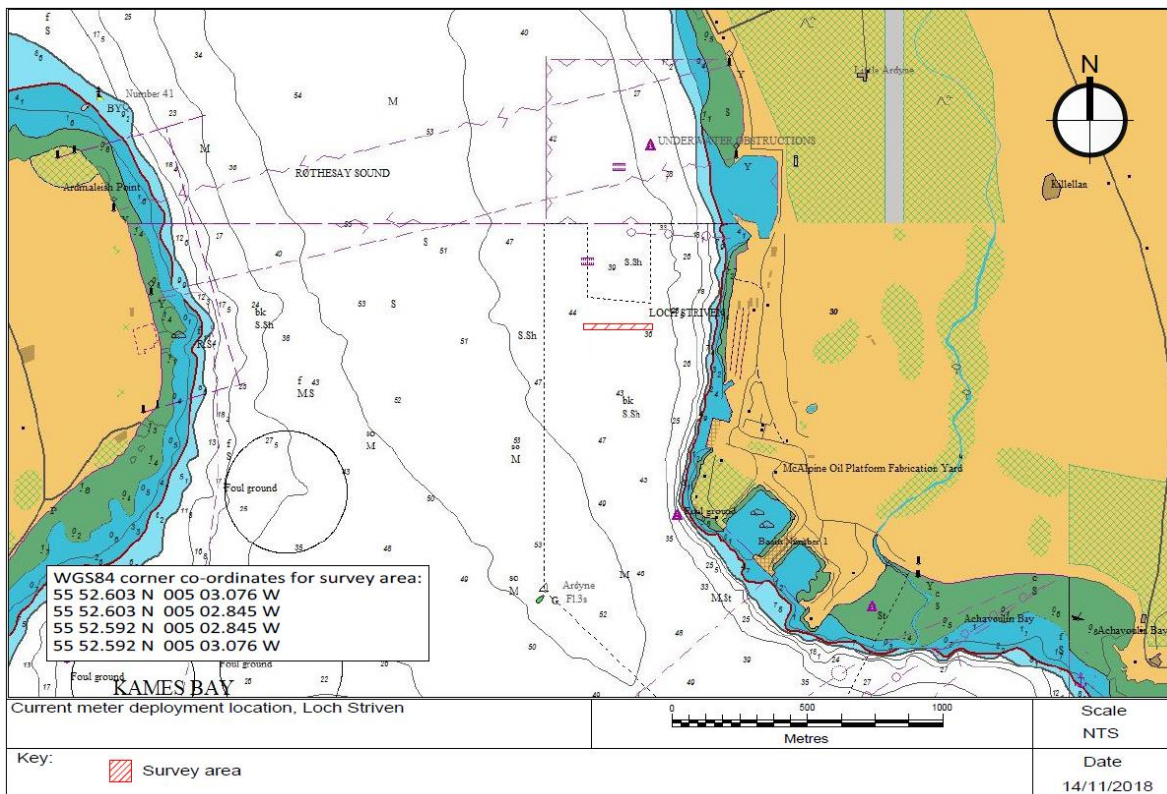
No 89/18

LOCH STRIVEN, DEPLOYMENT OF HYDROGRAPHIC SURVEY EQUIPMENT

Chart 1907

Mariners are advised that hydrographic survey equipment will be deployed on the seabed within an area bounded by the following positions:

Latitude	Longitude
55°52.603'N	005°03.076'W
55°52.603'N	005°02.845'W
55°52.592'N	005°02.845'W
55°52.592'N	005°03.076'W



The equipment will be deployed on or around Thursday 15th November by the vessel MV RHONA and will remain in position for a period of approximately 3 weeks.

Mariners are asked to navigate with caution in this area.

Estuary Radio may be contacted on VHF 12 or on ☎ 0151 949 6651.

Brian Forrest, Senior Manager Marine Operations
 Peel Ports Clydeport, Marine Department,
 Greenock Ocean Terminal, Patrick Street, GREENOCK, PA16 8UU
 Tel: 01475 726221 Fax: 01475 727006
 Email: clydemarinemanagers@peelports.com

NTM: 89/18
 Page: 1 of 1
 Valid from: 15th November 2018
 Expiry Date: 31st December 2018