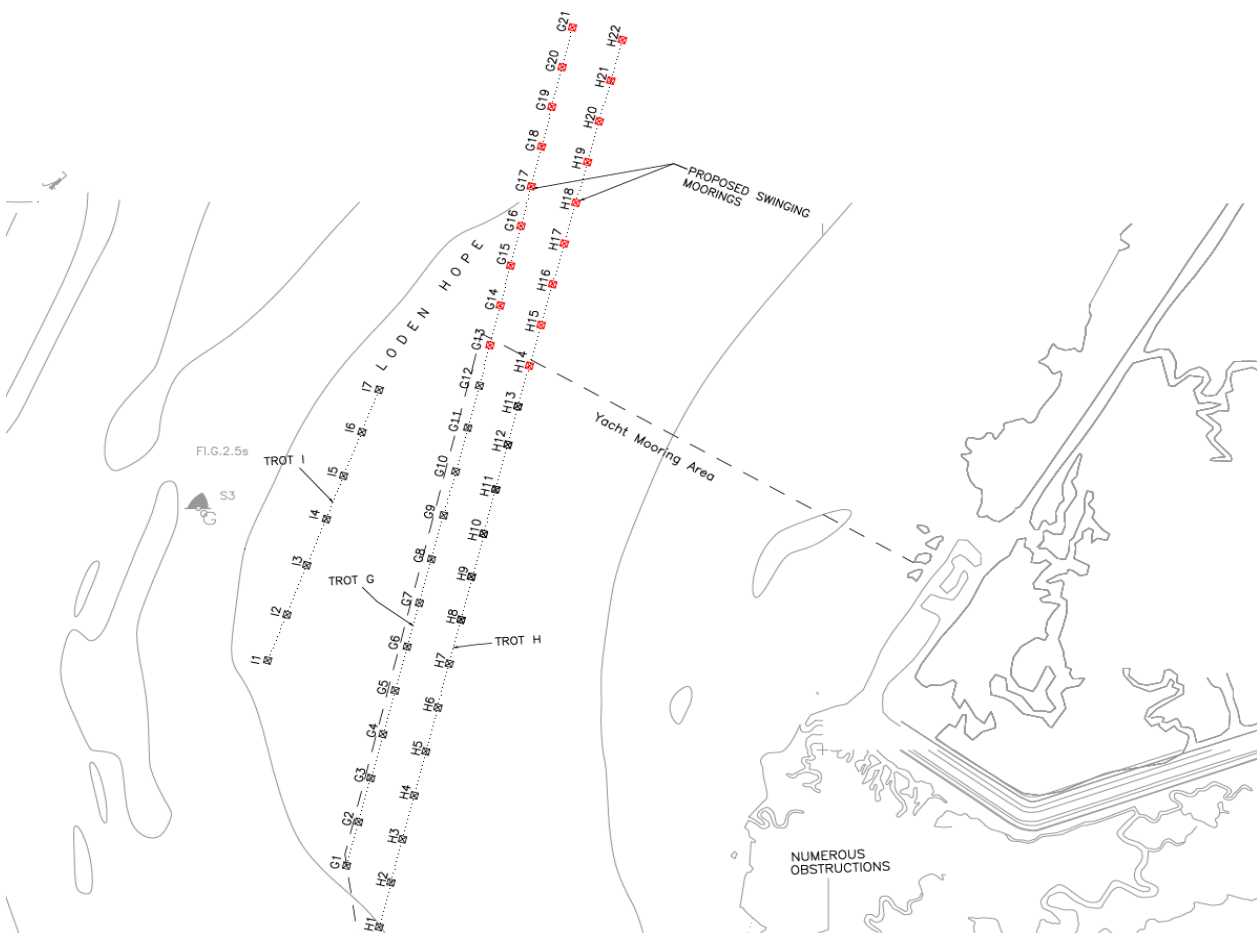


No. 29 – 2018

SWALE – QUEENBOROUGH HARBOUR & LODEN HOPE

Lifting of Commercial Moorings and Laying of New Yacht Moorings.

1. Notice is hereby given of works in Queenborough Harbour to lift the existing commercial moorings (Queenborough No.1 to No.4 bouys) and lay new yacht moorings at Queenborough Harbour and Loden Hope (shown in red as per the below plans).

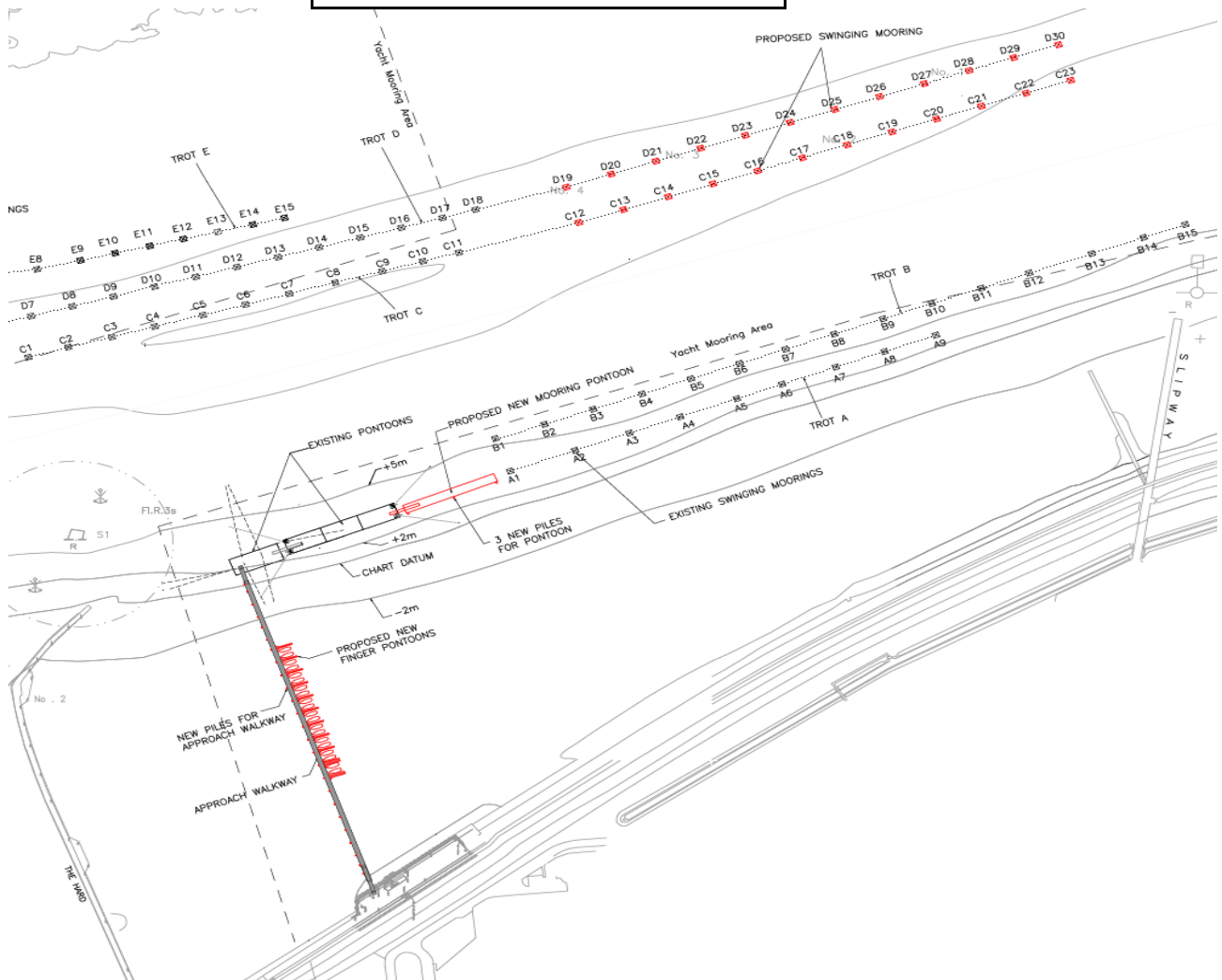


NOTICE TO MARINERS

	deg	min		
Upstream				
G21	51	24.858	N	51.4143
	0	43.554	E	0.7259
G12	51	24.834	N	51.4139
	0	43.698	E	0.7283

	deg	min		
Upstream				
H22	51	24.870	N	51.4145
	0	43.560	E	0.7260
H13	51	24.840	N	51.4140
	0	43.710	E	0.7285

	deg	min		
Upstream				
(C12)	51	25.127	N	51.4188
	0	44.028	E	0.7338
(C23)	51	25.276	N	51.4213
	0	43.956	E	0.7326



NOTICE TO MARINERS



2. Further works will be carried out by Port of London Authority using the buoy maintenance vessel “London Titan” and the dive support vessel “Driftwood II” during the period 17-18 September 2018. Personnel will be working on the water, conducting diving operations and using heavy lifting equipment throughout the period. “London Titan and “Driftwood II”” will maintain a listening watch on VHF Channel 74.

Mariners are advised to slow down, make minimum wash, maintain a listening watch on VHF Channel 74 and navigate with caution keeping well clear when passing.

3. Further information can be obtained from Medway VTS on VHF Channel 74 (Callsign “Medway VTS”) or telephone 0151 949 6148 or 0151 949 6650

Marine Operations Department
Peel Ports London Medway

14th September 2018