



NOTICE TO MARINERS

No 80/18

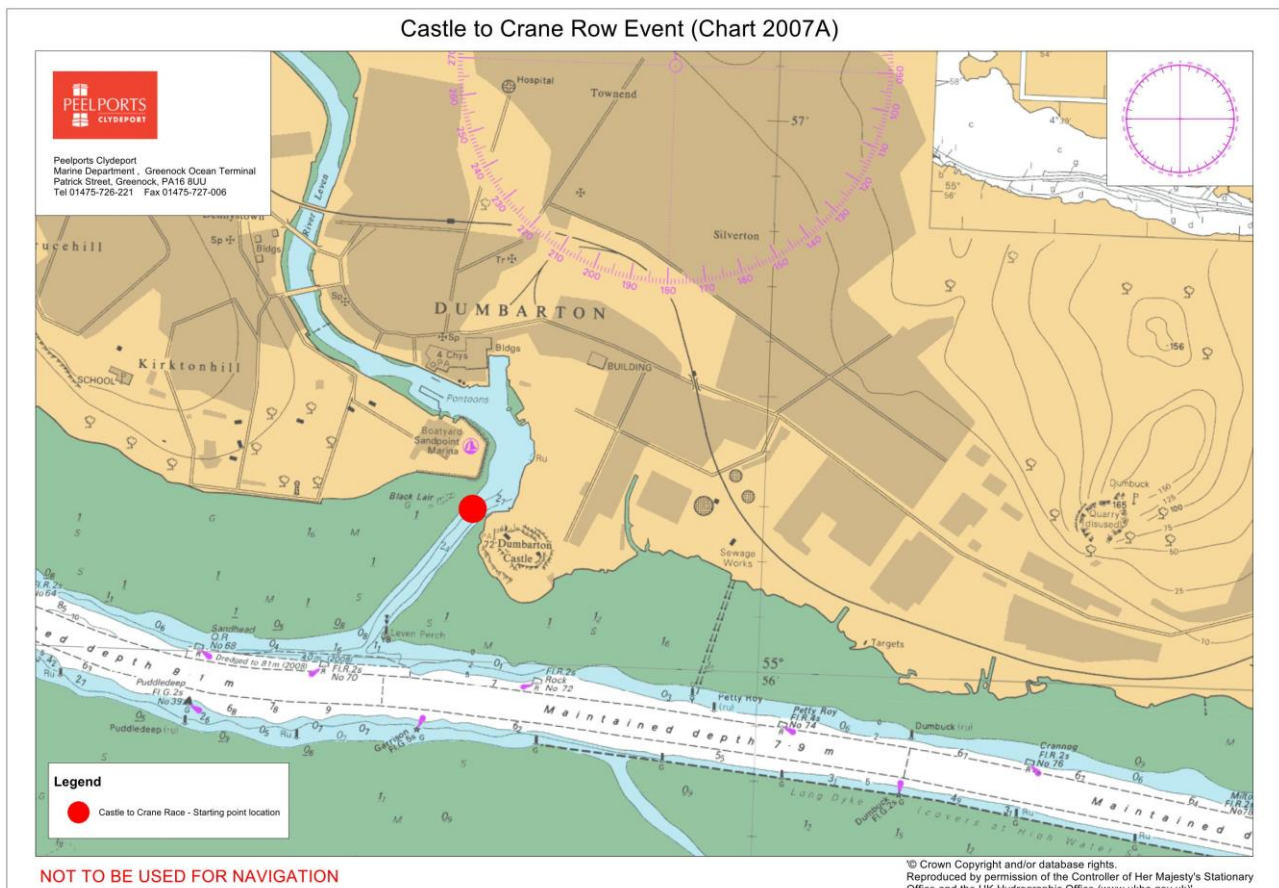
RIVER CLYDE

CASTLE TO CRANE ROW EVENT

Chart 2007 Plan A and Plan D

Mariners are advised that a rowing race will take place on Saturday 15th September 2018, starting at 1115hrs. 75 boats and 400 crew are taking part with the last boat setting off at 1200hrs and it is expected that all boats will have completed the course by 1600hrs or thereabouts. The Castle to Crane Row is one event to help celebrate the ship and boat building industry on the Clyde and is just one of a number of events forming the Clydebuilt Festival.

Boats will assemble from Sandpoint Marina in the River Leven with the start of the race from Dumbarton Castle being signalled by cannon fire. Boats will then race from the River Leven into the River Clyde towards Glasgow. The finish line is at the Finnieston Crane and the boats will continue upriver through the Clyde Arc Bridge. They will then turn and proceed downriver to Kelvin Harbour where boats will be recovered from the water at the Glenlee.

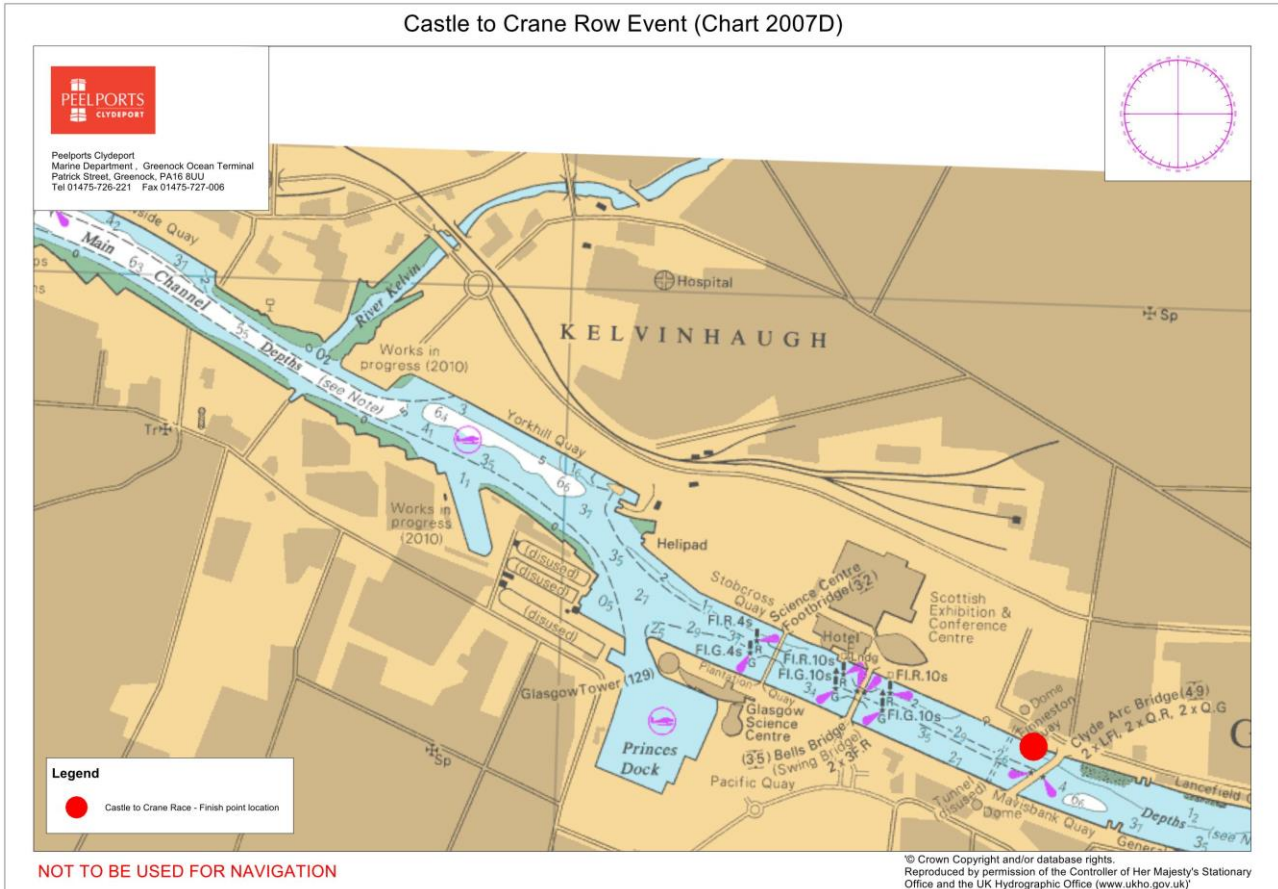


Brian Forrest, Senior Manager Marine Operations
Peel Ports Clydeport, Marine Department,
Greenock Ocean Terminal, Patrick Street, GREENOCK, PA16 8UU
Tel: 0151-949 6651
Email: clydemarinemanagers@peelports.com

NTM: 80/18
Page: 1 of 2
Valid from: 12th September 2018
Expiry Date: 31st December 2018



Castle to Crane Row Event (Chart 2007D)



All boats participating in the race will have race numbers placed on the bow of the vessel. 9 safety boats will accompany the race and there are a number of designated emergency recovery areas along the river route.

For further information, Estuary Radio may be contacted on VHF 12 or ☎ 0151-949 6651.

Brian Forrest, Senior Manager Marine Operations
Peel Ports Clydeport, Marine Department,
Greenock Ocean Terminal, Patrick Street, GREENOCK, PA16 8UU
Tel: 0151-949 6651
Email: clydemarinemanagers@peelports.com

NTM: 80/18
Page: 2 of 2
Valid from: 12th September 2018
Expiry Date: 31st December 2018