



NOTICE TO MARINERS

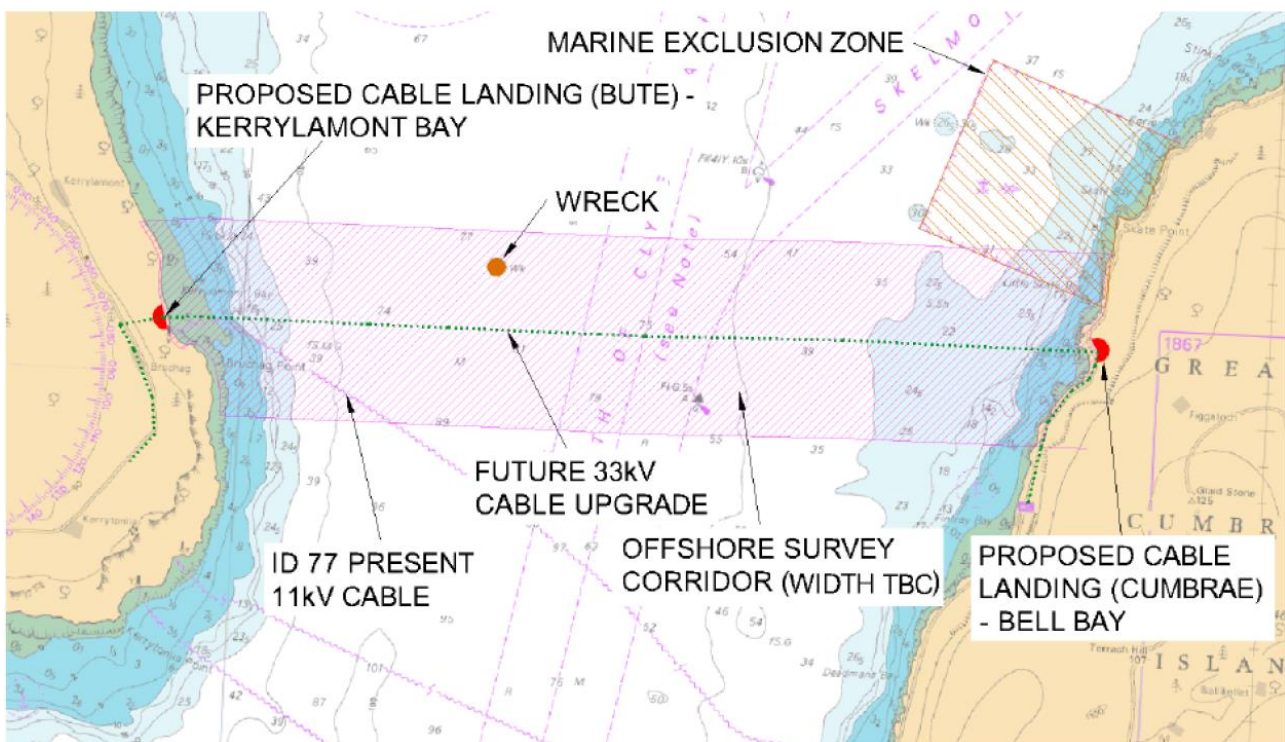
No 65/18

FIRTH OF CLYDE – KERRYLAMONT BAY TO BELL BAY

HYDROGRAPHIC SURVEY OPERATIONS

Chart 1907

Mariners are advised that hydrographic survey operations will be conducted from Monday 23rd July for a period of approximately 11 days. The works will be conducted in the area between Kerrylamont Bay (north of Bruchag Point, Isle of Bute) and Bell Bay (south of Skate Point, Great Cumbrae Island).



The works will be conducted by survey vessels MERSEY GUARDIAN and REMOTE SENSOR. As these vessels may be restricted in their ability to manoeuvre during survey operations Mariners are asked to navigate with caution and give a wide berth.



Estuary Radio may be contacted on VHF 12 or on ☎ 0151 949 6651.