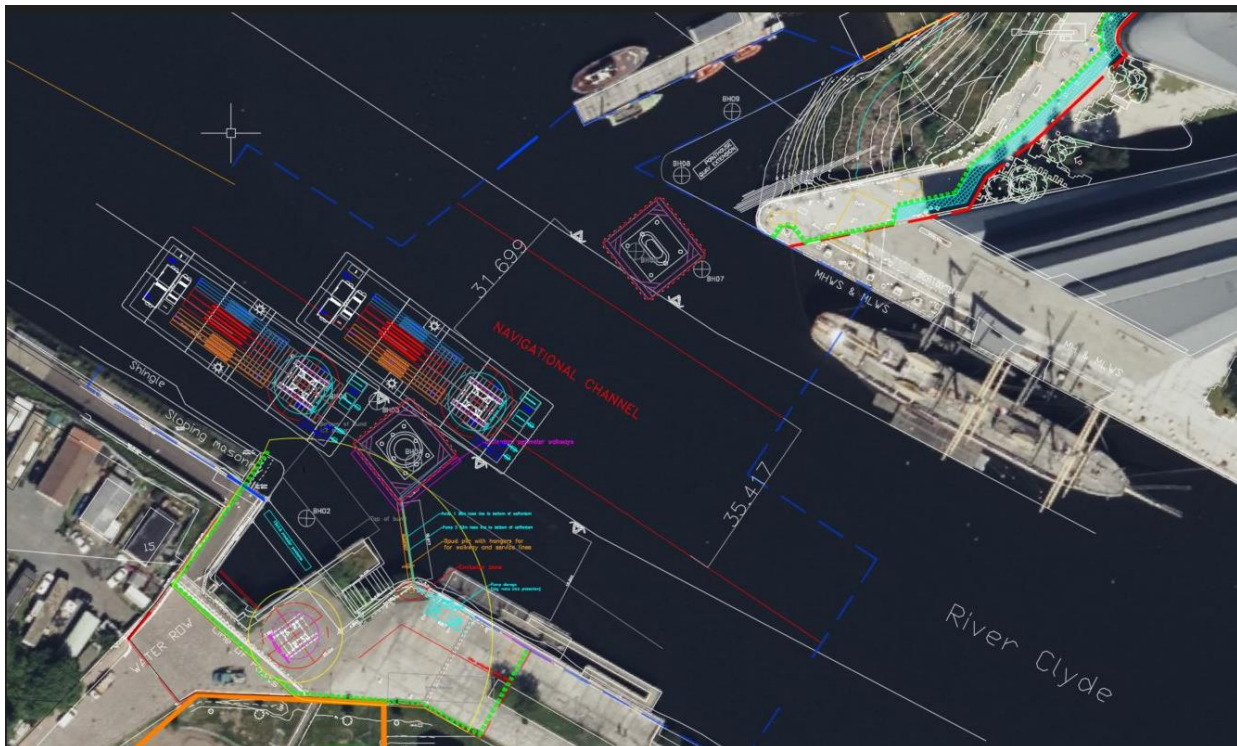


NOTICE TO MARINERS No 87/22 RIVER CLYDE – GOVAN TO PARTICK FOOTBRIDGE BARGE POSITION

Chart 2007 Plan D

Mariners are advised that works continue to construct the Govan to Partick Footbridge. Barge CW-6 may be positioned partly within the navigable channel to facilitate the works until approximately the end of December 2022. The drawing below illustrates the barge positions.



Mariners are requested to navigate with caution in this area. All vessels will maintain a listening watch on VHF Ch 12.

Estuary Radio may be contacted on VHF Ch 12 or on ☎ 0151 949 6651.

OSCAR



BARGE CW-6

