

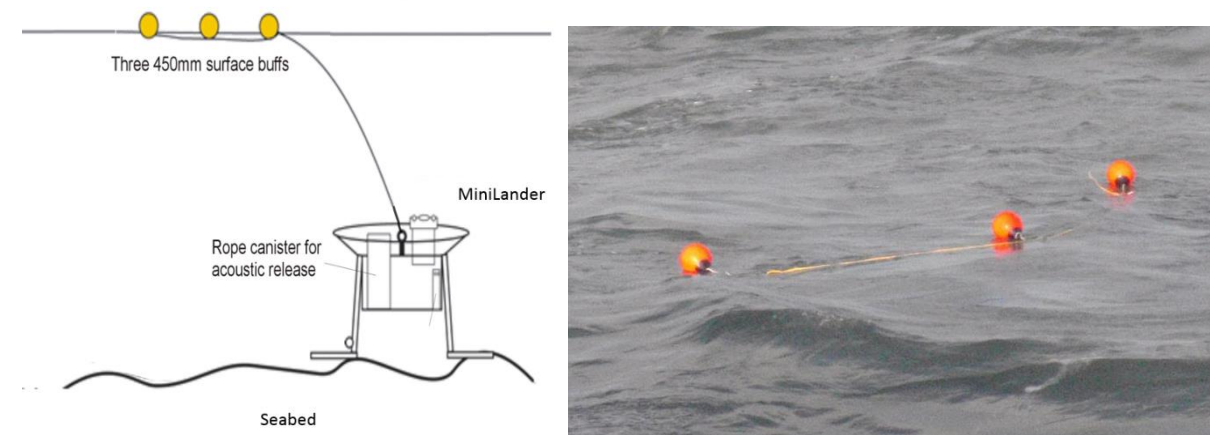
# NOTICE TO MARINERS

**No. 20 – 2018**

## RIVER MEDWAY – MEDWAY APPROACH CHANNEL

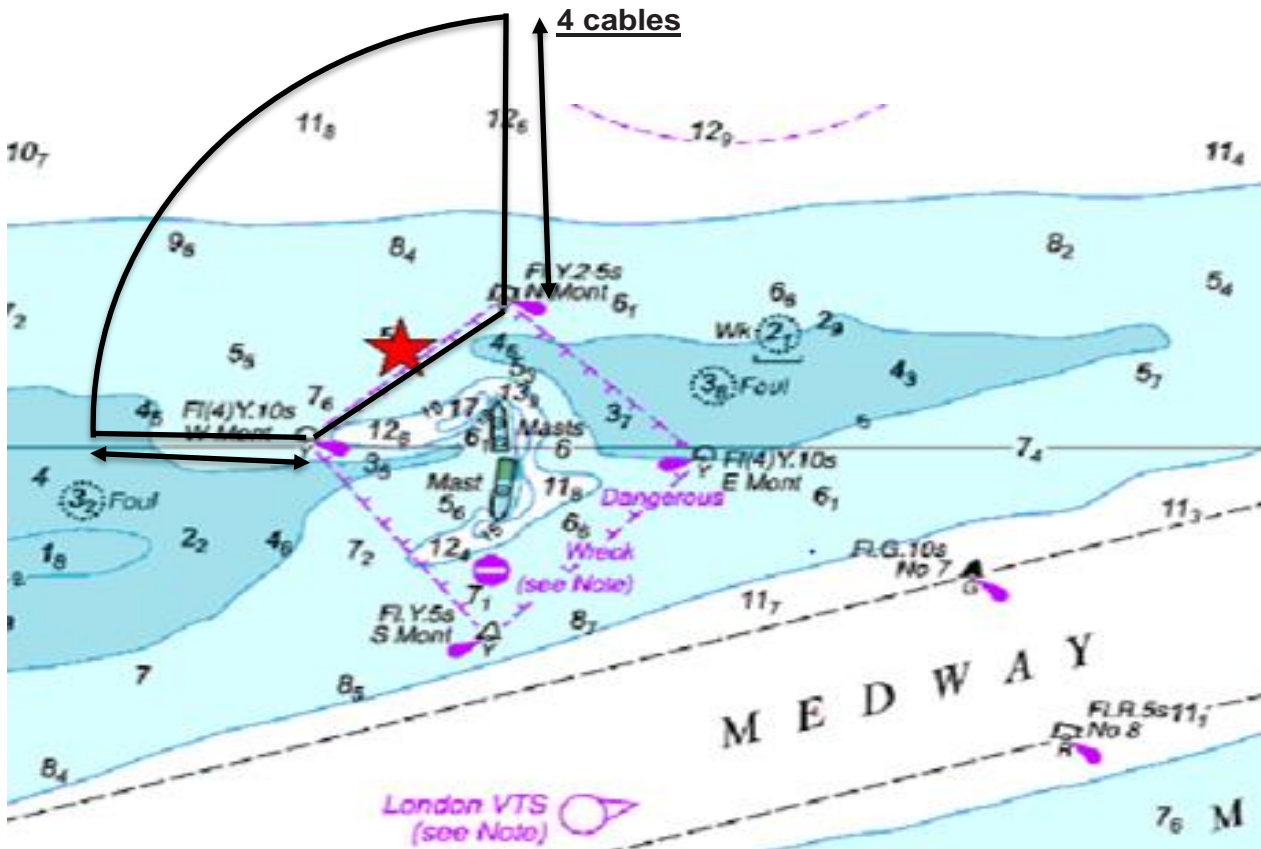
### SS RICHARD MONTGOMERY WRECK

NOTICE IS HEREBY GIVEN that from 23<sup>rd</sup> May 2018 to 01<sup>st</sup> June 2019 oceanographic recording equipment will be placed on the seabed just outside the Wreck Exclusion Zone in position 51° 28.086'N 000° 46.914'E.



The equipment will consist of a seabed Lander marked by 3 red buoys and deployed NW of the Wreck Exclusion Zone for the entire period.

# NOTICE TO MARINERS



All mariners are requested to keep a **minimum** of **4 cables** clear by navigating outside the area bounded by the sector marked above based on Admiralty chart 3683 – Sheerness and Approaches

Marine Operations Department  
Peel Ports London Medway

22<sup>nd</sup> May 2018