



NOTICE TO MARINERS

No 48/18

LOCH FYNE – FV NANCY GLENN MARINE OPERATIONS

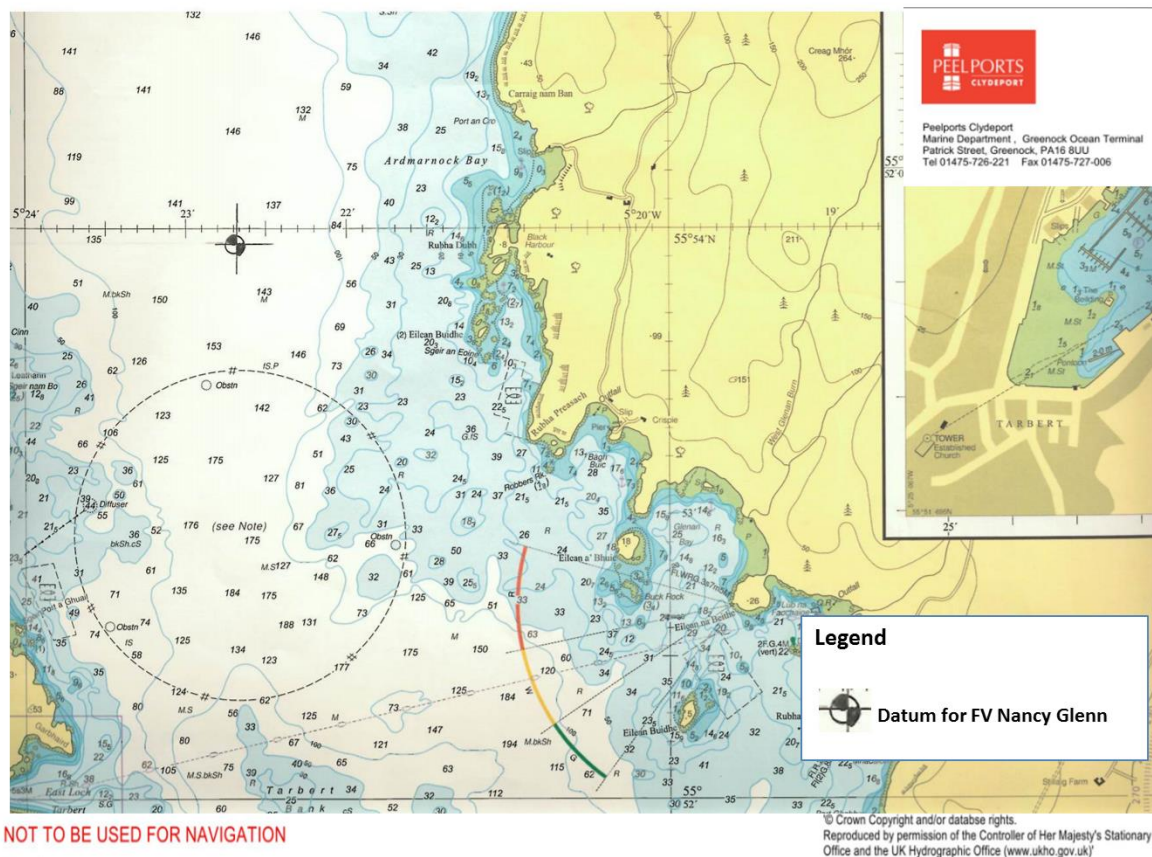
Chart 2381

Mariners are advised that work is ongoing on the site of the FV NANCY GLENN in Loch Fyne.

The SEVERN SEA continues to operate within the SoSREP TEZ. A barge BD6072 is due to arrive onsite on or around 24th March. The TEZ will be increased in size at that time to a 500m radius. The mooring arrangement for the barge will include marker buoys fitted with yellow flashing lights.

It is anticipated that works will conclude on or around 5th-6th April 2018.

MAIB INVESTIGATION - ROV AND SURVEY OPERATIONS – LOWER LOCH FYNE



Brian Forrest, Senior Manager Marine Operations
Peel Ports Clydeport, Marine Department,
Greenock Ocean Terminal, Patrick Street, GREENOCK, PA16 8UU
Tel: 01475 726221 Fax: 01475 727006
Email: clydemarinemanagers@peelports.com

NTM: 48/18
Page: 1 of 2
Valid from: 22nd March 2018
Expiry Date: 31st December 2018



Both the KML Vessel SEVERN SEA and the lifting barge BD6072 will be restricted in their ability to manoeuvre and will be displaying appropriate shapes and lights throughout the operations. All vessels transiting the area are required to remain outside the TEZ. The vessels will be monitoring VHF Ch 16 and Ch 12.



KML Vessel SEVERN SEA



Barge BD6072

Mariners are reminded that SOSREP's TEZ MSI 001/18 dated 1900 19 January, 2018 remains in force.

Estuary Radio may be contacted on VHF 12 or on ☎ 0151 949 6651.

Brian Forrest, Senior Manager Marine Operations
Peel Ports Clydeport, Marine Department,
Greenock Ocean Terminal, Patrick Street, GREENOCK, PA16 8UU
Tel: 01475 726221 Fax: 01475 727006
Email: clydemarinemanagers@peelports.com

NTM: 48/18
Page: 2 of 2
Valid from: 22nd March 2018
Expiry Date: 31st December 2018