



## NOTICE TO MARINERS

No 36/18

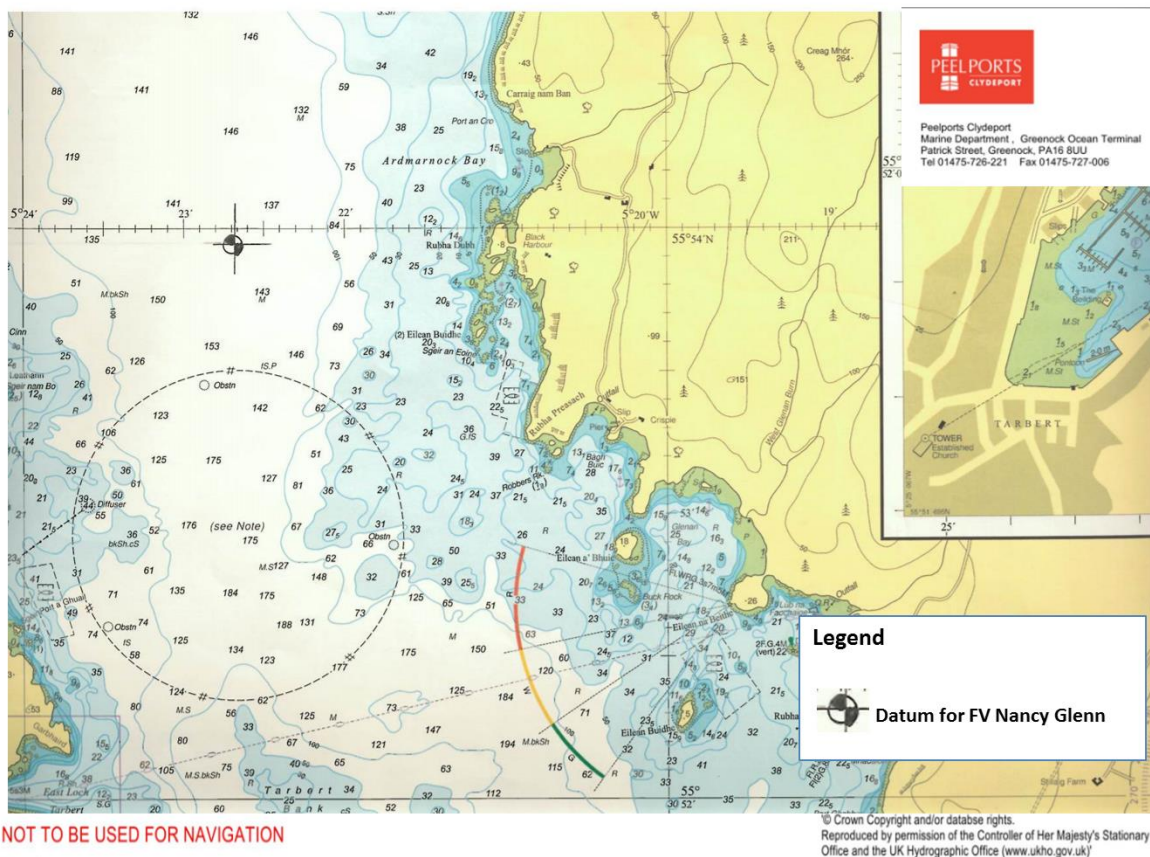
### LOCH FYNE – FV NANCY GLENN MAIB INVESTIGATION ROV AND SURVEY OPERATIONS

Chart 2381

Mariners are advised that further investigation are being conduct relating to the loss of the FV Nancy Glenn in Loch Fyne.

The KML Vessel SEVERN SEA will be conducting Survey and ROV operations in the vicinity of the FV Nancy Glenn datum, within the Secretary of State’s Representative (SOSREP) for Maritime Salvage and Intervention Temporary Exclusion Zones (TEZ). The Survey and ROV Operations are due to commence on or around Saturday 17th February 2018 and are expected to continue for 7 days or thereabouts.

#### MAIB INVESTIGATION - ROV AND SURVEY OPERATIONS – LOWER LOCH FYNE



The KML Vessel SEVERN SEA will be Restricted in it’s ability to manoeuvre and will be displaying appropriate shapes and lights during the survey and ROV operations. All vessels transiting the

Brian Forrest, Senior Manager Marine Operations  
Peel Ports Clydeport, Marine Department,  
Greenock Ocean Terminal, Patrick Street, GREENOCK, PA16 8UU  
Tel: 01475 726221 Fax: 01475 727006  
Email: clydemarinemanagers@peelports.com

NTM: 36/18  
Page: 1 of 2  
Valid from: 16<sup>th</sup> February 2018  
Expiry Date: 31<sup>st</sup> December 2018



area are requested to remain outside 500m from the vessel whilst operations are taking place and avoid impeding her track when on survey lines. The vessel will be monitoring VHF Ch 16 and Ch 12.



KML Vessel SEVERN SEA

Mariners are reminded that SOSREP's TEZ MSI 001/18 dated 1900 19 January, 2018 remains in force.

Estuary Radio may be contacted on VHF 12 or on ☎ 0151 949 6651.