



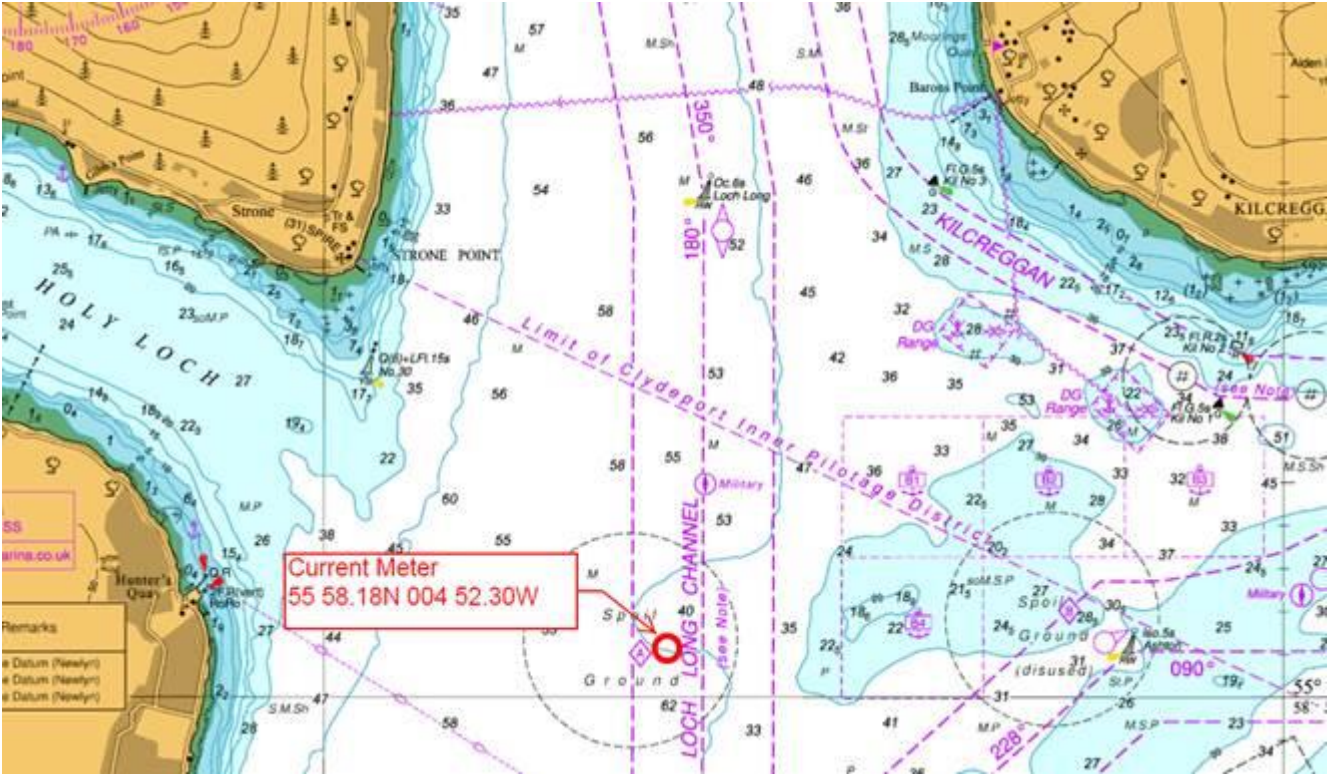
NOTICE TO MARINERS

No 28/18

FIRTH OF CLYDE, DEPLOYMENT OF CURRENT METER

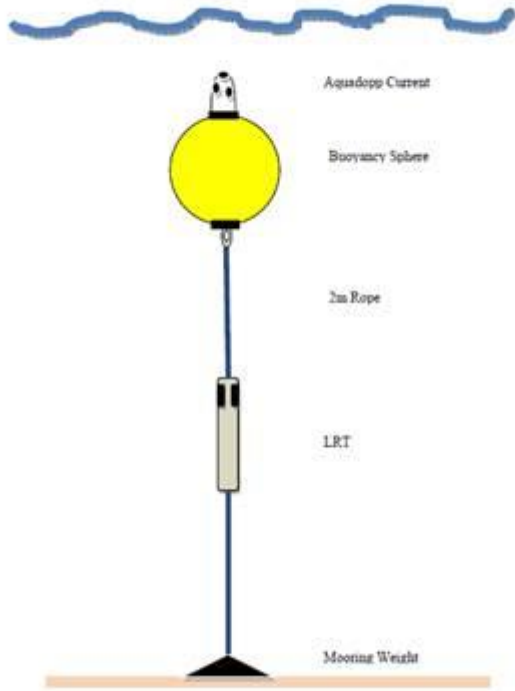
Chart 1994

Mariners are advised that a current meter will be deployed adjacent to Tidal Diamond A, as indicated on the chart extract below. The meter will be deployed by RN Survey Vessel SHACKLETON on or around Monday 29th January and will remain in position for approximately one month.



The meter will be deployed on the 50m contour, siting 3 metres proud of the seabed. See diagram below for typical arrangement of the equipment.

A typical deployment set up is shown below



Mariners are asked to navigate with caution and give a wide berth to the survey vessel. Estuary Radio may be contacted on VHF 12 or on ☎ 0151 949 6651.