



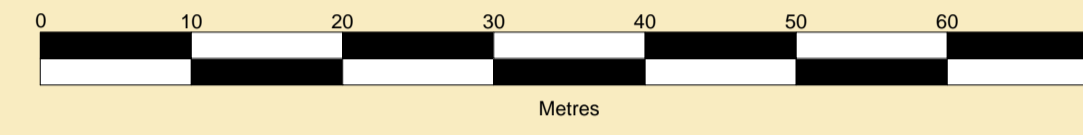
**PORT OF SHEERNESS LIMITED**

Gary Doyle  
Group Harbour Master

River Medway

**3002-1-23-001-C  
SHEERNESS DOCKS  
BERTHS NO 1 & 11**

SCALE 1:500 at A1



**DEPTHS**  
Depths are in metres and are reduced to chart datum being 2.90m below Ordnance Datum (Newlyn), which is approximately the level of the Lowest Astronomical Tide.

**HEIGHTS**  
Heights are in metres. Underlined figures show heights above Chart Datum.

**DEPTH COLOUR TABLE**

- (-1.5m,0m)
- (0m,10m)
- (10m,12m)
- (12m,17m)
- (>=17m)

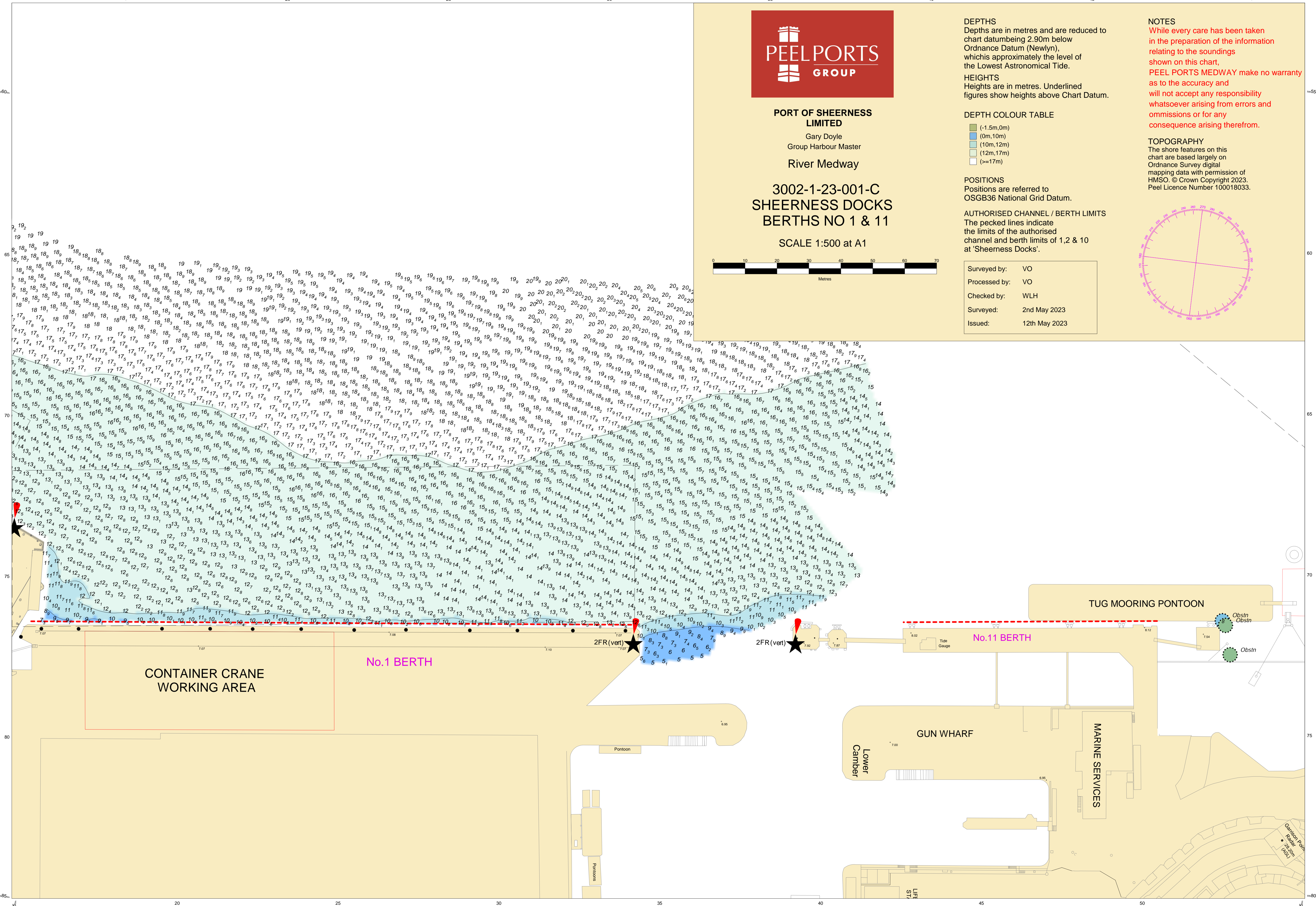
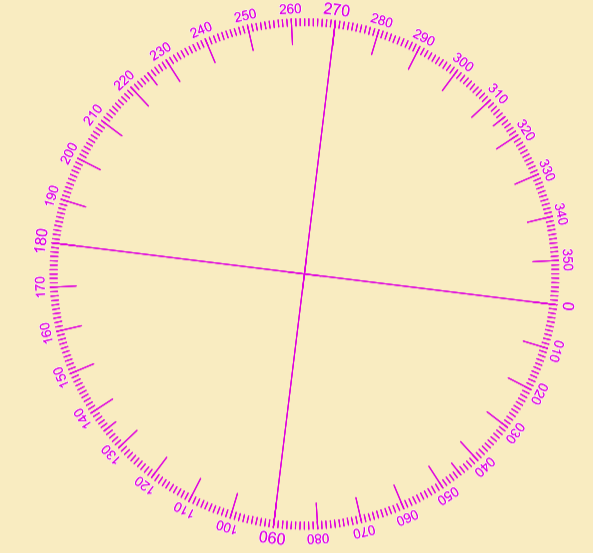
**POSITIONS**  
Positions are referred to OSGB36 National Grid Datum.

**AUTHORISED CHANNEL / BERTH LIMITS**  
The pecked lines indicate the limits of the authorised channel and berth limits of 1,2 & 10 at 'Sheerness Docks'.

Surveyed by:	VO
Processed by:	VO
Checked by:	WLH
Surveyed:	2nd May 2023
Issued:	12th May 2023

**NOTES**  
While every care has been taken in the preparation of the information relating to the soundings shown on this chart, **PEEL PORTS MEDWAY** make no warranty as to the accuracy and will not accept any responsibility whatsoever arising from errors and omissions or for any consequence arising therefrom.

**TOPOGRAPHY**  
The shore features on this chart are based largely on Ordnance Survey digital mapping data with permission of HMSO. © Crown Copyright 2023. Peel Licence Number 100018033.



**CONTAINER CRANE WORKING AREA**

**No.1 BERTH**

**2FR (vert)**

**2FR (vert)**

**No.11 BERTH**

**TUG MOORING PONTOON**

**GUN WHARF**

**Lower Camber**

**MARINE SERVICES**

**Garage Pontoon**

**Garage Pontoon**