



## NOTICE TO MARINERS

No 20/18

### RIVER CLYDE

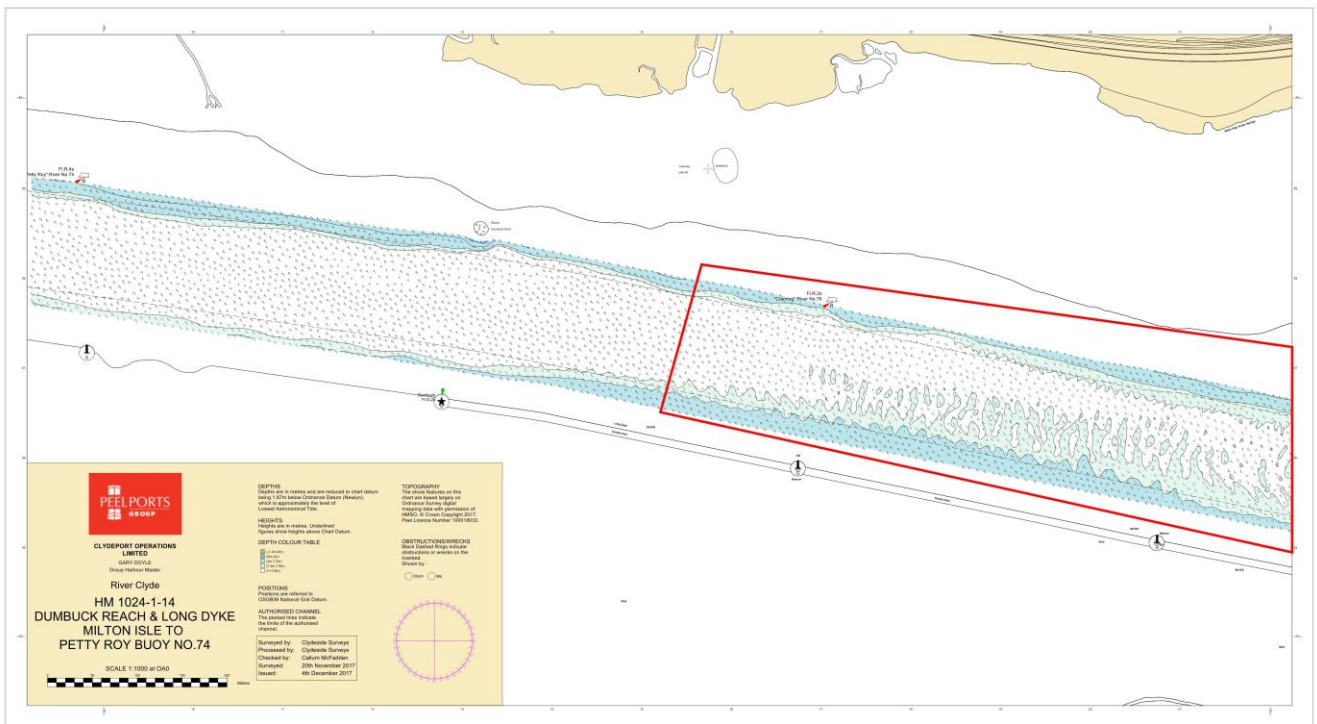
#### REDUCED DEPTHS – EAST OF DUMBUCK , KGV AND RIVERSIDE BERTHS

Mariners are advised that vessels with a draft >6m require to consult with the Harbour Master prior to transiting the following areas.

**Chart 2007, Plan A**

#### River Channel East of Dumbuck Beacon

Depths in the river channel in this area are reduced to 7m.

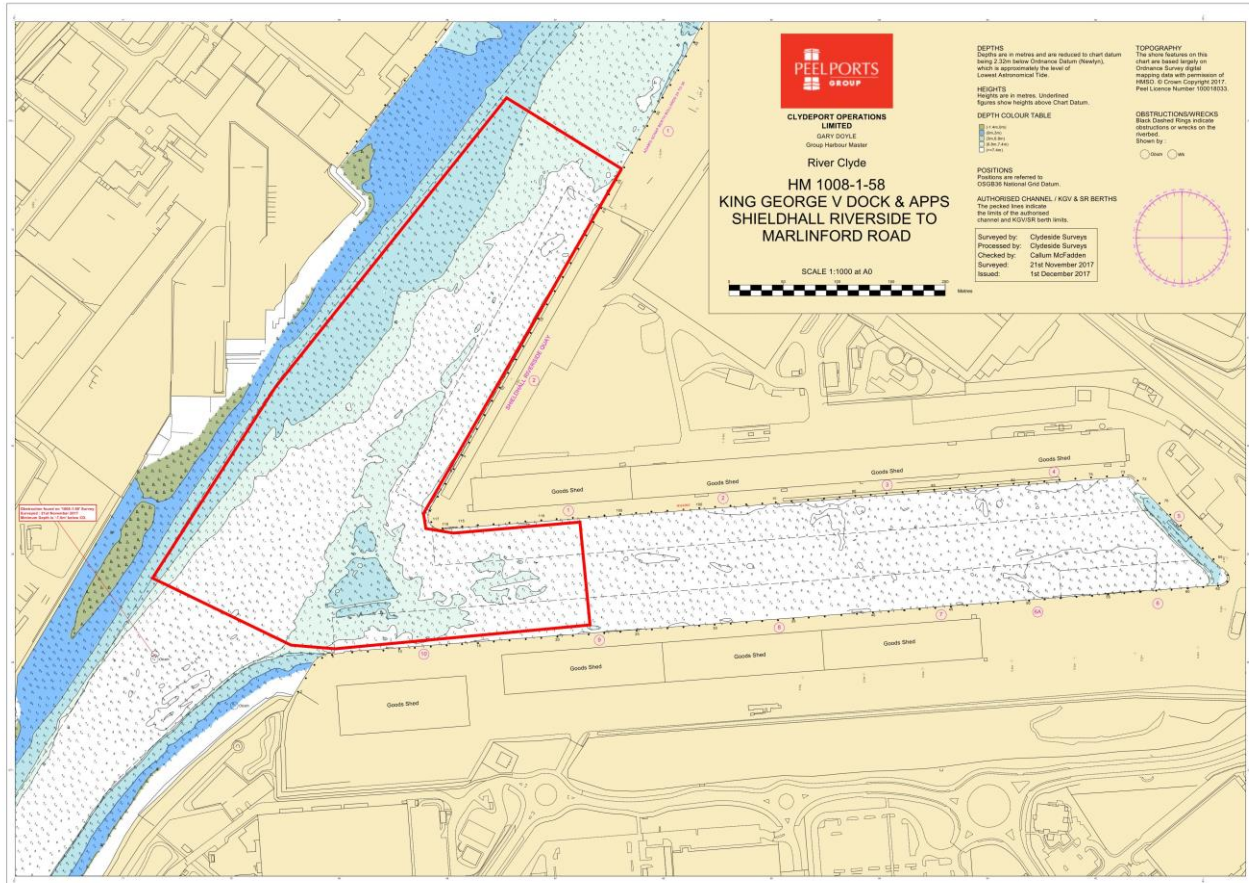


Brian Forrest, Senior Manager Marine Operations  
Peel Ports Clydeport, Marine Department,  
Greenock Ocean Terminal, Patrick Street, GREENOCK, PA16 8UU  
Tel: 0151-949 6651  
Email: clydemarinemanagers@peelports.com

NTM: 20/18  
Page: 1 of 2  
Valid from: 1<sup>st</sup> January 2018  
Expiry Date: 31<sup>st</sup> December 2018

KGV Dock and Riverside Berth

Depths on the north side of the river channel at Shieldhall and in the entrance to KGV are reduced to 6m.



For further information contact Estuary Radio ☎0151-949 6651 or VHF 12.

**TOPOGRAPHY**  
 The shore features on this chart are based largely on Ordnance Survey digital mapping data with permission of HMSO. © Crown Copyright 2017. Peel Licence Number 100018033.