



NOTICE TO MARINERS

No 05/21

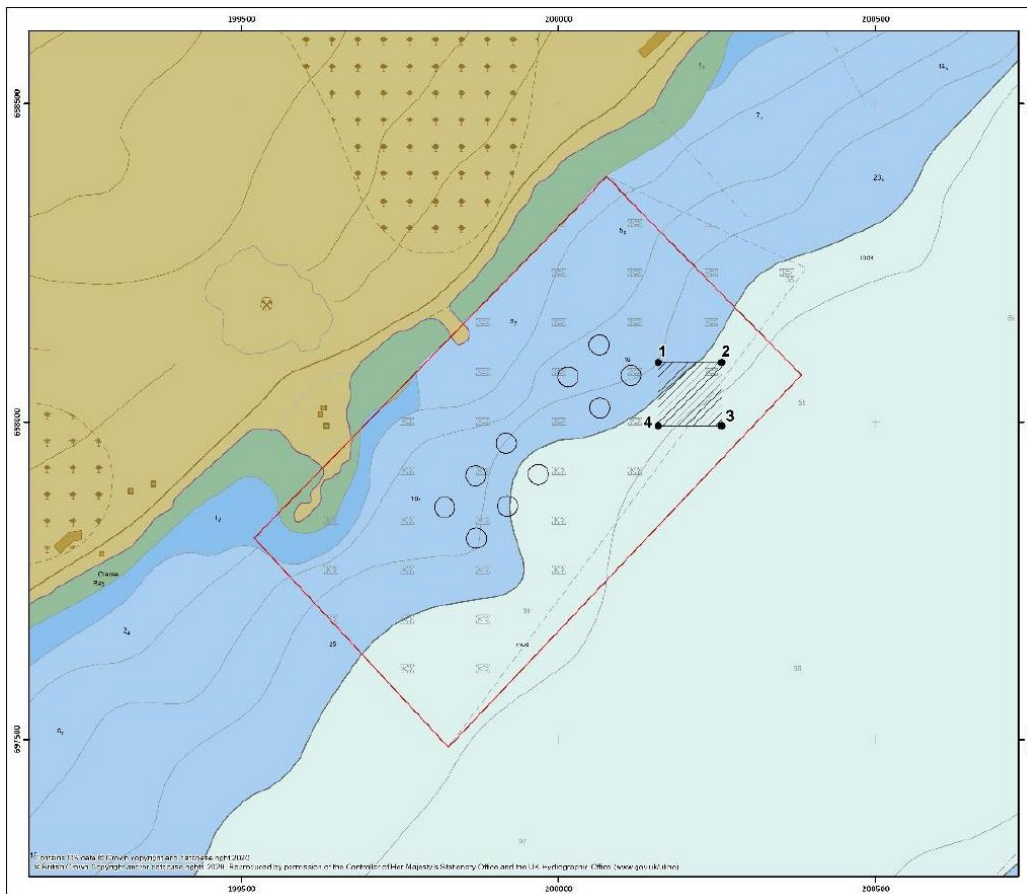
LOCH FYNE – QUARRY POINT

HYDROGRAPHIC SURVEY EQUIPMENT

Chart 2382

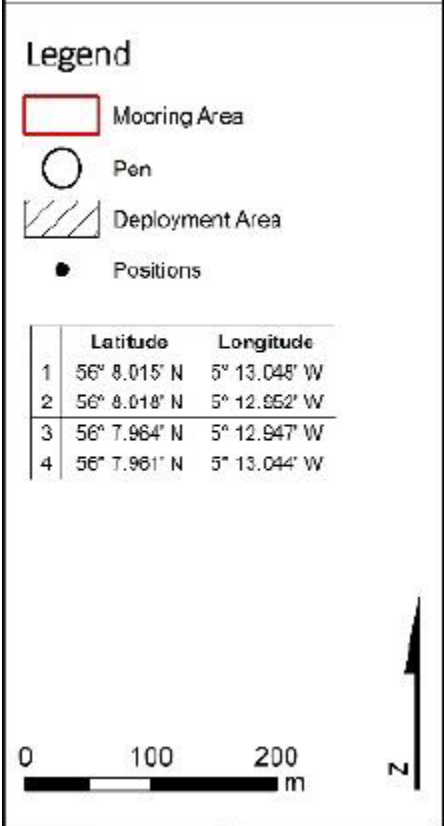
Mariners are advised that hydrographic survey equipment has been deployed within the Quarry Point finfish site mooring area, in a position to the north of Flagstaff in Loch Fyne, as indicated on the following chart extract. The equipment is expected to remain in position until around the end of February 2021.

The deployment location will be marked by 1 yellow buoy, with the topmark “X” and Fl (5) Y 20s flash sequence.



Charlie Simcox, Senior Manager Marine Operations
Peel Ports Clydeport, Marine Department,
Greenock Ocean Terminal, Patrick Street, GREENOCK, PA16 8UU
Tel: 0151-949 6651
Email: clydemarinemanagers@peelports.com

NTM: 05/21
Page: 1 of 2
Valid from: 1st January 2021
Expiry Date: 31st December 2021



Mariners should navigate with caution when transiting this area.

Estuary Radio may be contacted on VHF12 or 📞 0151 949 6651.