

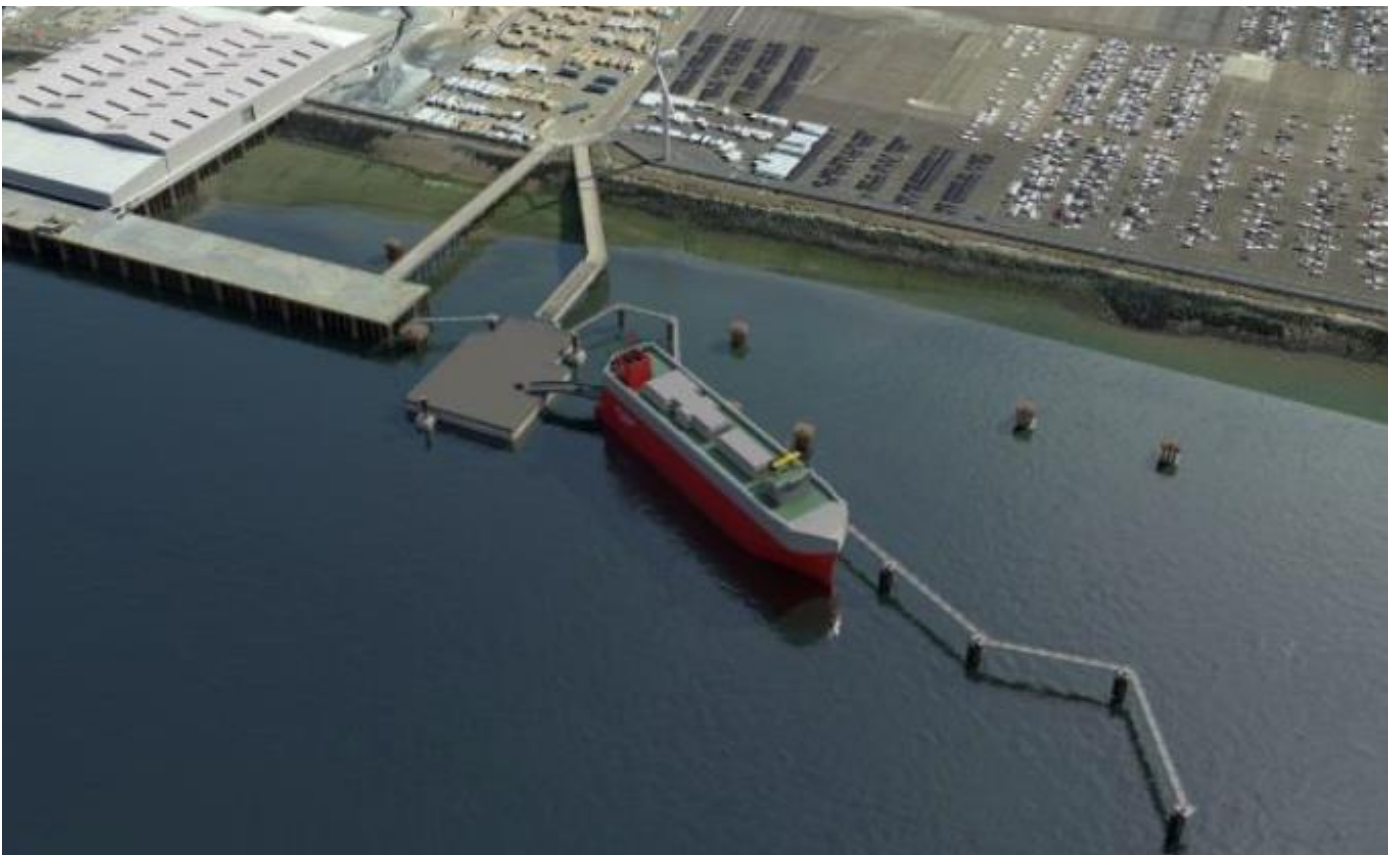
# NOTICE TO MARINERS

**No. 07 – 2025.**

## Sheerness Docks No. 4 Berth Extension Project

**Notice is hereby given that:** work on the Sheerness Docks, No. 4 berth extension project is due to commence on or around 1<sup>st</sup> March 2025. The project will be phased with some initial preparatory and demolition work taking place first along the quayside adjacent to Sheerness No 4 and No 5 berths. The crane barge “Skylift 2” will be towed to Sheerness by the tug “Feije”, once on site they will be assisted by the tug “Knighton” and safety/transfer boat “WSB Recover” who will all remain on site.

The overall expansion scheme is expected to be completed by the summer of 2025 when the new berth will be commissioned (see illustration below). Updates to this Notice to Mariners will be promulgated as work progresses and additional marine assets arrive on site.



## Skylift 2 and Tug Feije



**All vessels transiting Sheerness Harbour should navigate with caution, reduce speed and minimise wash accordingly.**

Admiralty Chart No.3683 refers.

Further information may be obtained from Medway VTS on VHF Channel 74, call sign “Medway VTS” or telephone 0151 949 6148 or 0151 949 6650. **(Recorded Lines)**

**Marine Operations Department  
Peel Ports London Medway**

**26<sup>th</sup> February 2025**