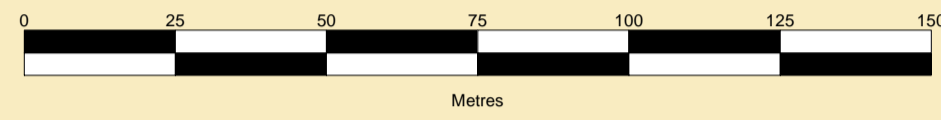




**MERSEY DOCKS AND HARBOUR COMPANY LTD**  
Captain Susan Cloggie-Holden MNM  
Group Harbour Master

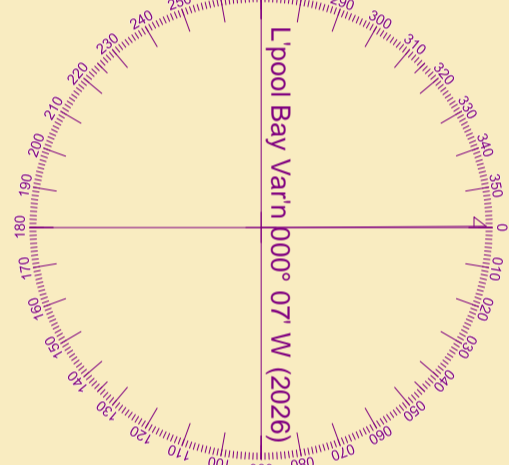
River Mersey

LPR002\_4\_2026\_004C  
Cammell Laird's Wall

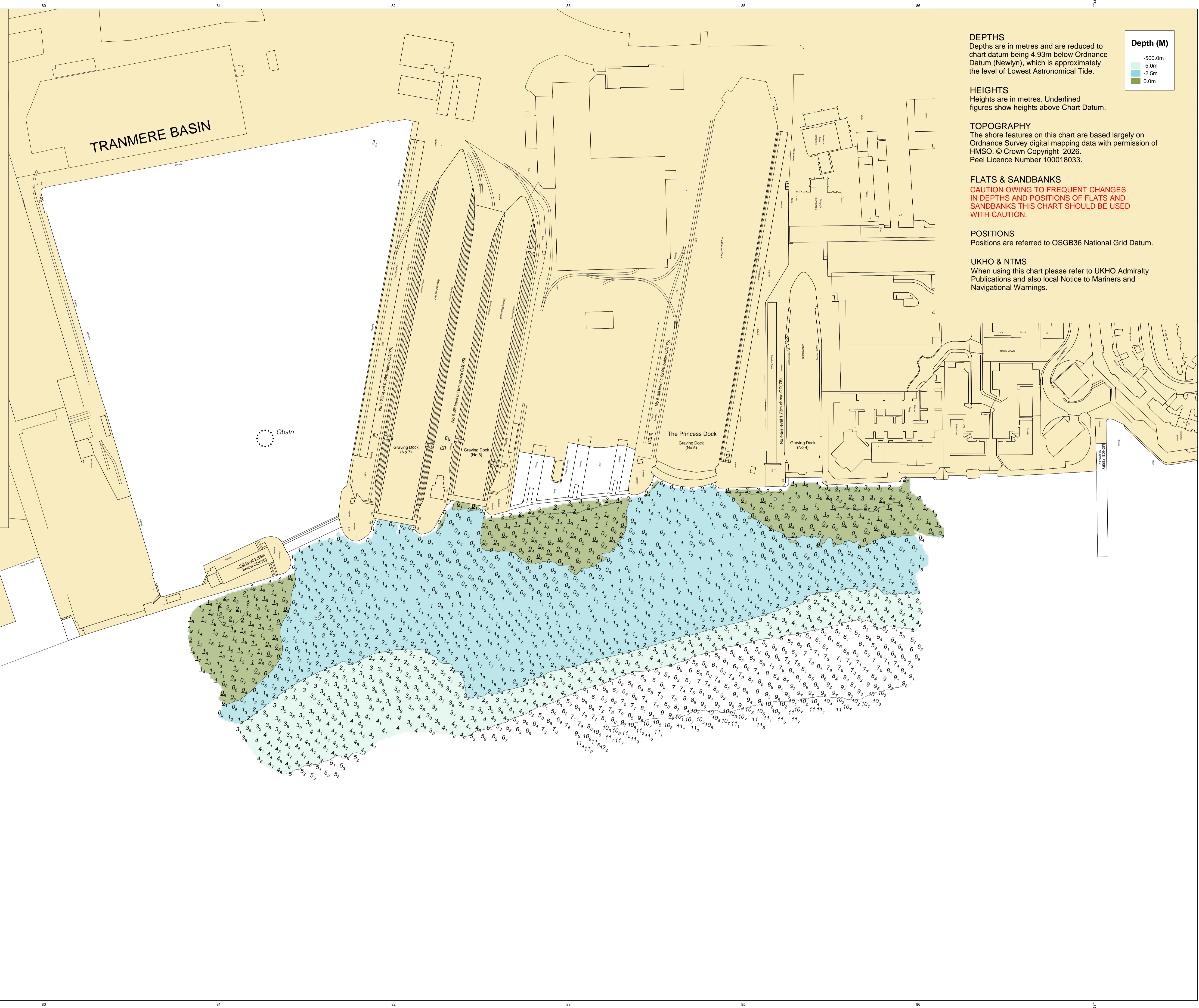


SCALE 1:1250 at A1

Surveyed by: VO  
Processed by: VO  
Checked by: WLH  
Surveyed: 3rd and 6th July 2026  
Issued: 8th July 2026



Pontoon and Moorings in this area  
(see MD&HC Ltd Notice to Mariners No 24 - 2012)



**DEPTHS**  
Depths are in metres and are reduced to chart datum being 4.93m below Ordnance Datum (Newlyn), which is approximately the level of Lowest Astronomical Tide.

**Depth (M)**  
-5.0m  
-2.5m  
0.0m

**HEIGHTS**  
Heights are in metres. Underlined figures show heights above Chart Datum.

**TOPOGRAPHY**  
The shore features on this chart are based largely on Ordnance Survey digital mapping data with permission of HMSO. © Crown Copyright 2026.  
Peel Licence Number 100018033.

**FLATS & SANDBANKS**  
**CAUTION OWING TO FREQUENT CHANGES IN DEPTHS AND POSITIONS OF FLATS AND SANDBANKS THIS CHART SHOULD BE USED WITH CAUTION.**

**POSITIONS**  
Positions are referred to OSGB36 National Grid Datum.

**UKHO & NTMS**  
When using this chart please refer to UKHO Admiralty Publications and also local Notice to Mariners and Navigational Warnings.