



Welcome to London Medway

Welcome to London Medway

Tom Harrison
Group Strategic Sales Director

Peel Ports Group
More Than Ports



More than ports

Peel Ports Group is the second largest port operator in the UK, managing the vital gateways which feed, build and power the nation.

We own and operate 20 of the most important hubs, terminals and ports in the UK and Ireland.

Our services enable the efficient flow of cargo and are key for the nation's economic growth and prosperity, facilitating global trade and helping to connect markets worldwide



What we do

As a major UK port operator, we handle 70 million tonnes of cargo per year, welcoming 15% of the UK's total port traffic through our waters.

We work to boost traditional supply chain practices by leveraging our Ports as strategic hubs for the fast and efficient movement of goods – supporting customers in reducing costs, improving lead times and lowering carbon emissions.



Who we are



Peel Ports Group



20 strategically located Ports and Terminals across the UK and Ireland, handling every commodity via a wide portfolio of services and bespoke solutions.

Peel Ports Logistics



An integrated one-stop-shop logistics network which combines shipping, port operations, storage, container trucking, storage and extensive distribution services.

BG Freight Line



BG Freight Line

The Group's shipping line enables comprehensive feeder services between Ireland, the UK and major hubs across continental Europe.

Group in numbers

We are the UK's second largest port operator by tonnage

>£1 billion invested
over the last three years



215,000
vessel movements per year



70 million tonnes
of cargo every year



15% UK
Market Share



24 strategically located ports
and terminal in United Kingdom and Ireland



Net Zero
across our operations
by 2040

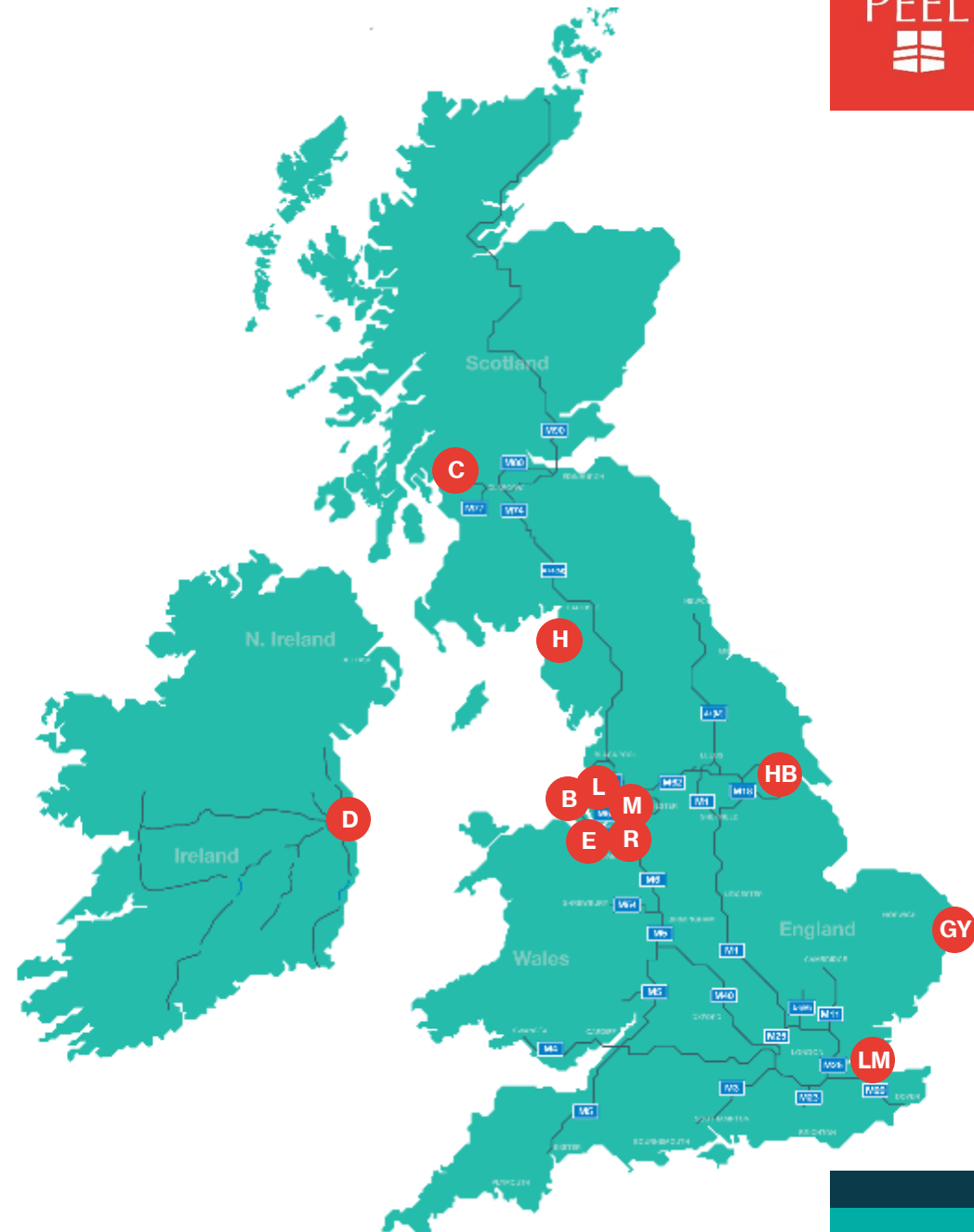
NET ZERO
2040

2,000
Strong team



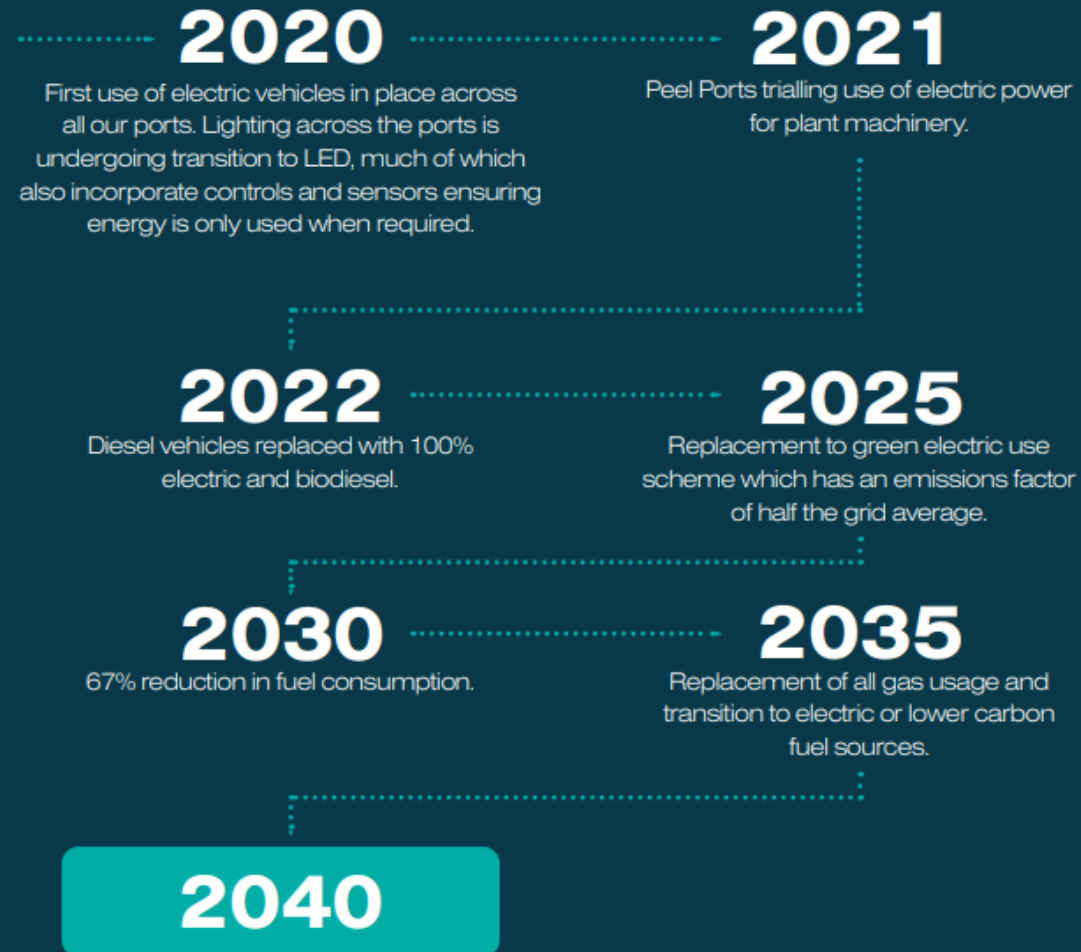
Locations

- C** Clydeport
- H** Heysham
- L** Liverpool
- B** Birkenhead
- E** Ellesmere Port
- R** Runcorn
- D** Dublin
- M** Manchester Ship Canal
- HB** Humber Bulk Terminal
- GY** Great Yarmouth
- LM** London Medway



Our Journey to Net Zero

NET ZERO 
2040



London Medway

The ideal gateway for the capital, Southeast and beyond

The strategic and versatile docks of Sheerness and Chatham form the London Medway cluster, a 450 acre in proximity to the nation's capital and mainland Europe, is designed to meet the needs of customers across the South East and beyond.

Commodities handled at London Medway:



Roro &
automotive



Metals



Liquid
bulks



Forest
products



Dry
bulks



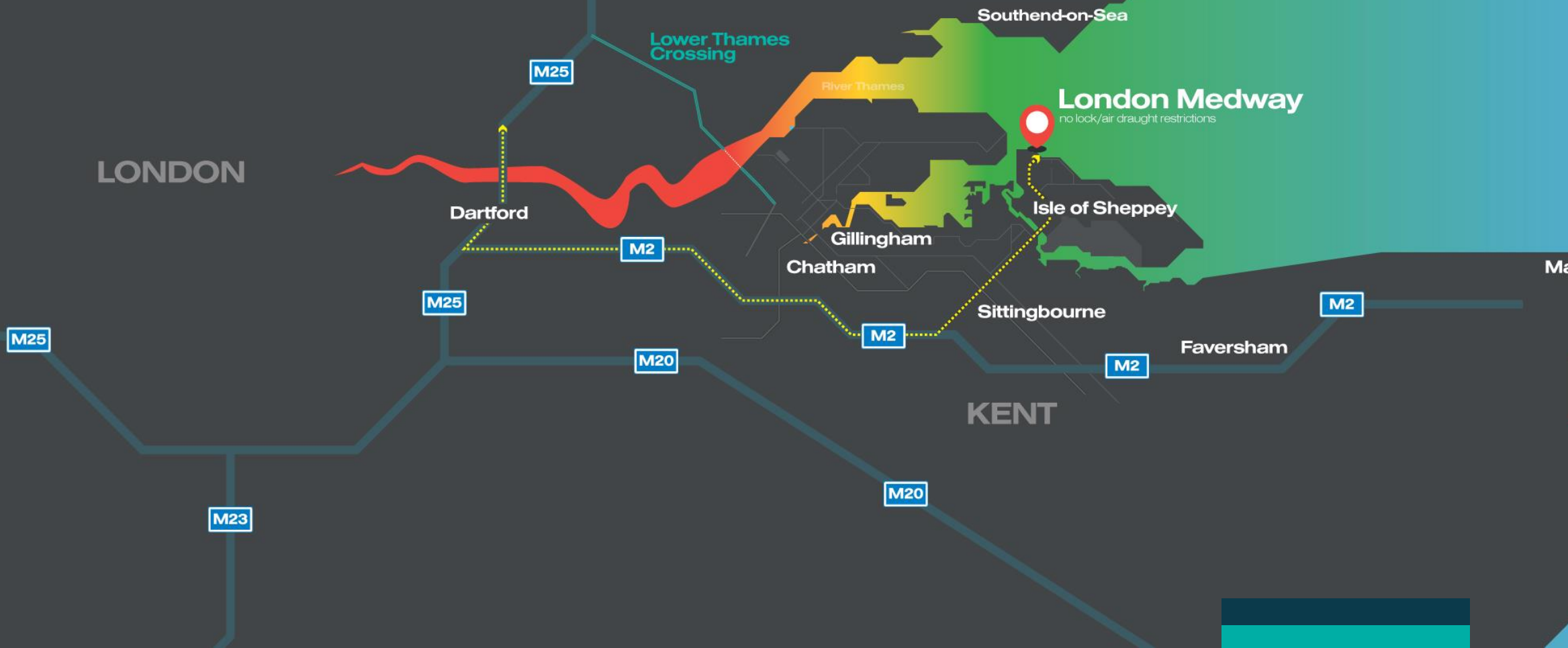
Project
Cargo



Location and Connectivity

Strategically positioned on the River Medway, just 35 miles from the M25, London Medway is one of the most accessible and well-connected ports in the Southeast.

Its prime location offers unrivalled proximity to Europe's busiest shipping lanes, major UK distribution hubs, and key transport networks, enabling seamless logistics solutions for a wide range of industries.



Local Investments

Major investments which enable game-changing sustainable projects, future-proof operations and deliver long-term regional and national economic benefits.

c.£130m

Invested in the Port of Sheerness over the last 10 years including:



£53m

in upgrades to warehousing and open storage capacity



£30m

in the new RoRo berth extension



£26m

in marine assets including berth upgrades

Our Facilities and Handling Capabilities

450-acre site
with an additional 200 acres
of development land

1,000 meters
of berth space

15 million
tonnes of cargo
through annually

8
specialised
RoRo berths

300,000+
vehicles handled annually at
London Medway

**Pre-delivery inspections
(PDI) facilities**
and compounds operated
by partners

100,000m²
of paper storage facilities

500,000+
tonnes of paper products
handled each year

250,000m³
of timber handled per year,
of which just under half also
goes through treatment

RoRo Berth

1. Faster Vessel Turnaround

The new berth is designed to handle both **stern and quarter ramp RoRo vessels**, enabling quicker loading/unloading and reducing idle time.

Modern design and generous berth dimensions allow **simultaneous vehicle or cargo operations**, improving efficiency.

2. Greater Vessel Flexibility

Accommodates a **wider range of RoRo vessels**, meaning you're not restricted to specific ship designs – ideal for fleet optimization and long-term planning.

3. Enhanced Reliability

With deep marine foundations and robust construction (105-tonne piles), the berth is engineered for **long-term resilience and operational uptime**, even in challenging conditions.

4. Future-Proofed Capacity

With generous berth size (75m long x 48.5m wide), this facility supports **larger vessels and higher throughput**, making it suitable for growth in volumes – be it cars, plant, or rolling cargo.



Solutions at every touch point.

PortPlus+ is a range of extra services at convenient port locations, strategically situated closer to your end destinations, streamlining your logistics from port arrival to final delivery.



+Store

Protect your goods with flexible, on-demand capacity



+Move

Maximise efficiency to your cargo movements across sea, road and rail.



+Process

Optimise value with expert cargo handling and processing solutions.



+Develop

Drive your operations forward with existing and bespoke property options.

Our People..



We directly employ staff across our key disciplines and utilise third party labour to manage our marine mooring and to help with the spikes in demand.

Directly Employed....

106 Operational staff

32 Marine staff

23 Engineering staff

17 Security staff

3 Quality, Health & Safety staff

26 Overhead staff inc Planning, Customer Service, Finance & HR

207 heads

Operational Staff - 3rd Party Labour

100 heads

Mooring Staff - 3rd Party Labour

30 heads

Access to Group Functions providing guidance and support in...

- HSE
- Marine Compliance
- Property & Planning
- HR
- Marketing
- Finance
- Procurement
- Engineering
- Legal

..... we work with our peers in other port locations to share knowledge



Thank you

Peel Ports Group
More Than Ports



GRIMALDI GROUP



Finnlines

Service Presentation:
Sheerness, London Medway

Tuesday 10th of June
Port of Sheerness

The Scope:



We are dedicated to moving cargo and passengers efficiently, sustainably and safely.

Through our network we facilitate trades and generates value for communities.



Trucks & Trailers,
Containers, Breakbulk,
Automotive, Passengers

The Service:



A weekly liner service linking the Port of Sheerness to major harbours in Finland, Poland, Belgium and Spain.

Suitable for carrying trucks and trailers, containers, breakbulk, automotive and project cargo

Transit-Time (days):		SHEERNESS	
		IMP.	EXP.
FI	Helsinki	8	6
FI	Kotka	5	7
PL	Gdynia	4	5
BE	Antwerp/Zeebrugge	1	1
SP	Bilbao	10	3



The Offer:

Reliability & Intake Flexibility

- Finnlines' latest multipurpose RoRo vessels are deployed in service, ensuring schedule reliability and intake flexibility thanks to 5.800 LM capacity.

Environmentally Sustainable

- The three new hybrid Eco-class RoRo vessels are equipped with advanced energy-saving technology, ensuring the lowest carbon footprint per unit transported.
- Now also available up to 90% CO2 reduction.

Developed Terminal Infrastructure

- All terminals in the network are fully equipped for handling breakbulk, containers and RoRo cargo, and can provide storage facilities.
- Direct access to rail network and motorways infrastructure is also available

Extensive Network of Connections

- In addition to direct connections to Spain, Belgium, Poland and Finland, there is access to the Grimaldi Group network, extending to the Far-East, the Middle-East, Mediterranean, West Africa, South America and the East Coast of the United States.

The Partnership:

We are proud of the partnership established with the Peel Ports Group, and we look forward to continuing the successful development.

Key features:

- Professionalism and Dynamism
- Infrastructure Excellence
- Location Convenience
- Flexibility and Adaptability



The Community Impact:

The new service link will not only enhance trade with the UK but also contribute to the growth of the local economy:

- More dockers are needed to operate on the ships, in the warehouses and in the terminal.
- Increased land transport capacity is required to distribute the goods intermodally.
- Warehouse facilities and handling equipment must be aligned with the new volumes,

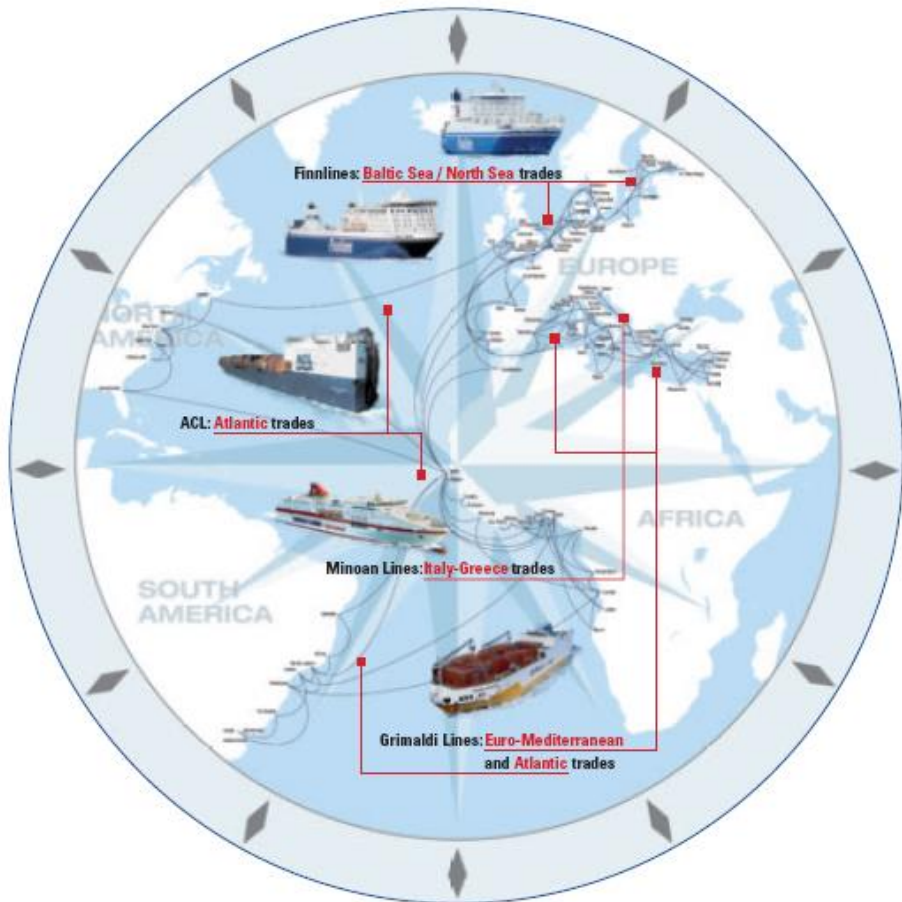
Finnlines is seeking support from local and regional suppliers to establish Sheerness as the point of reference for the UK intermodal transport system.





GRIMALDI GROUP

**OUR NET
WORKS.**



Thank You

Finnlines

Contact us:



Daniel Edwards, Head of Sales:

Daniel.Edwards@peelports.com



**Simon Wheeler, Head of
Commercial Services:**

Simon.Wheeler@cevalogistics.com



**Blasco Majorana, Line
Manager:**

blasco.majorana@finnlines.com