



**MERSEY DOCKS AND HARBOUR COMPANY LTD**

Gary Doyle  
Group Harbour Master

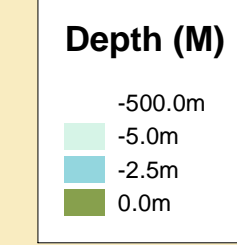
River Mersey

**LPR002\_4\_2023\_003C  
Cammell Laird's Wall**

Surveyed by: VO  
Processed by: VO  
Checked by: RK  
Surveyed: 30th August 2023  
Issued: 11th September 2023

**DEPTHS**  
Depths are in metres and are reduced to chart datum being 4.93m below Ordnance Datum (Newlyn), which is approximately the level of Lowest Astronomical Tide.

**HEIGHTS**  
Heights are in metres. Underlined> figures show heights above Chart Datum.

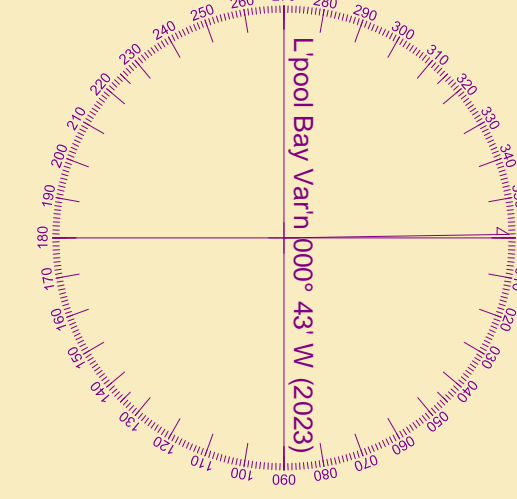


**TOPOGRAPHY**  
The shore features on this chart are based largely on Ordnance Survey digital mapping data with permission of HMSO. © Crown Copyright 2023. Peel Licence Number 100018033.

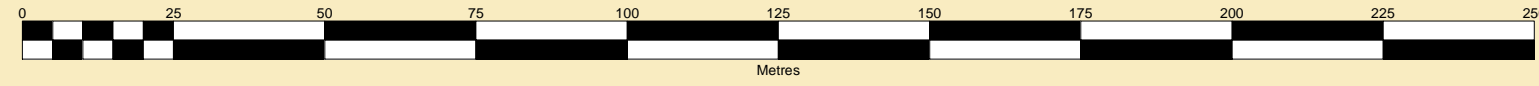
**FLATS & SANDBANKS**  
**CAUTION OWING TO FREQUENT CHANGES IN DEPTHS AND POSITIONS OF FLATS AND SANDBANKS THIS CHART SHOULD BE USED WITH CAUTION.**

**POSITIONS**  
Positions are referred to OSGB36 National Grid Datum.

**UKHO & NTMS**  
When using this chart please refer to UKHO Admiralty Publications and also local Notice to Mariners and Navigational Warnings.

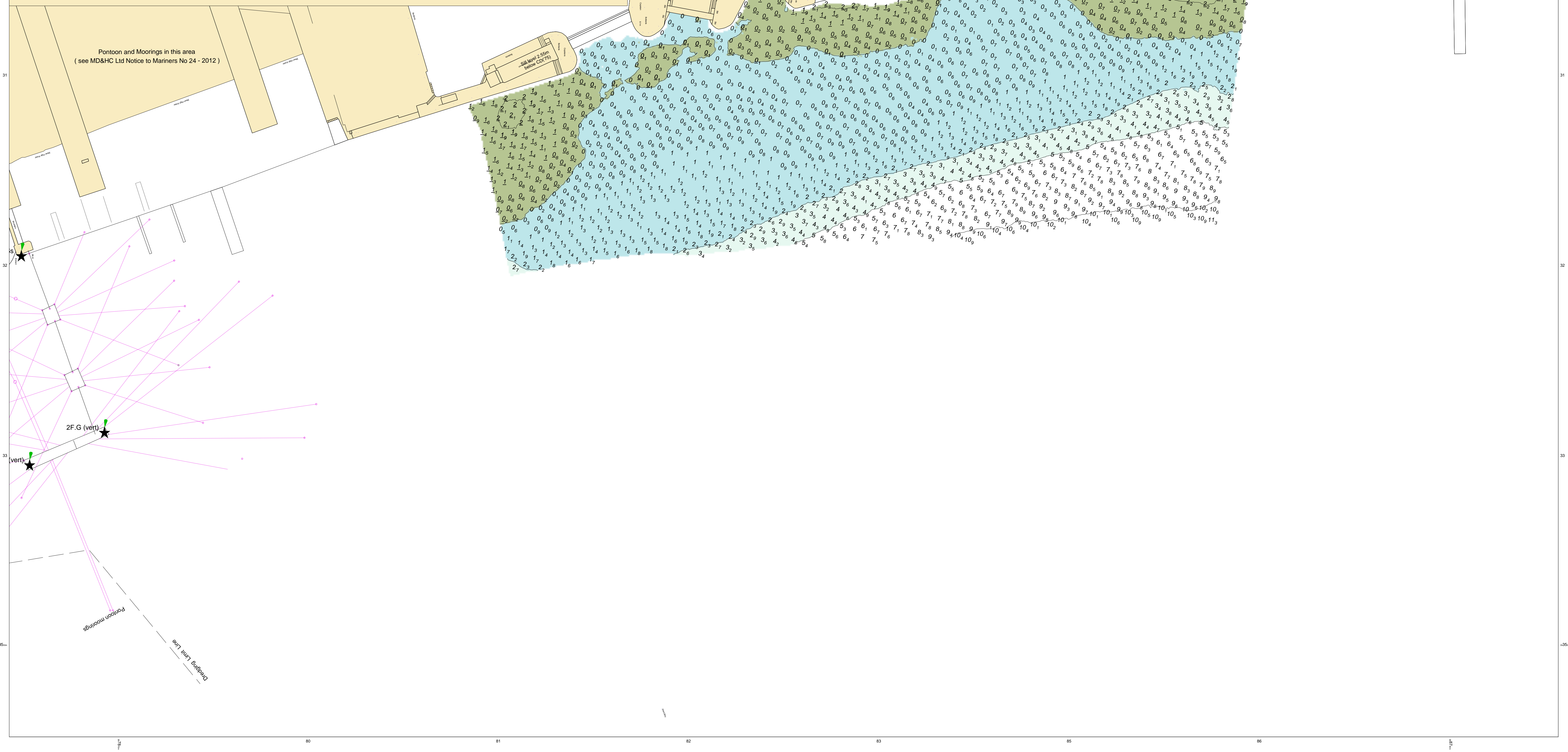
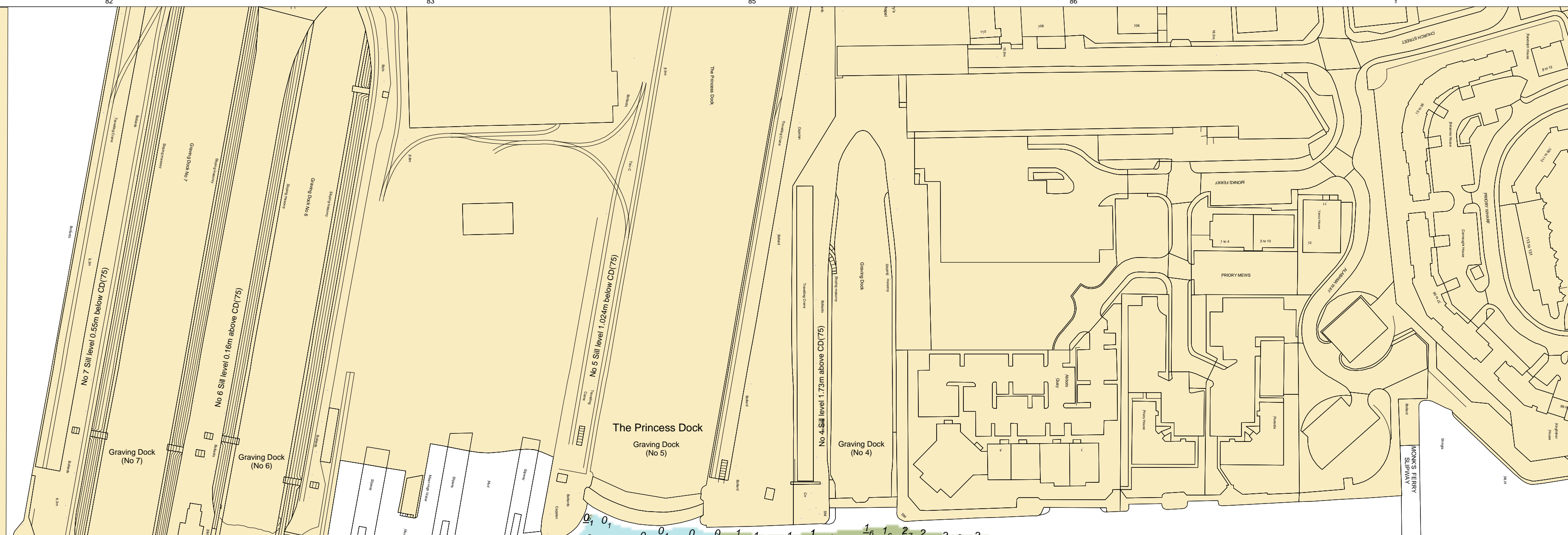


SCALE 1:1250 at A1



Pontoon and Moorings in this area  
(see MD&HC Ltd Notice to Mariners No 24 - 2012.)

Sill level 2.55m below CD(75)



2F.G (vert)

(vert)

Pontoon Moorings  
Dredging Lane