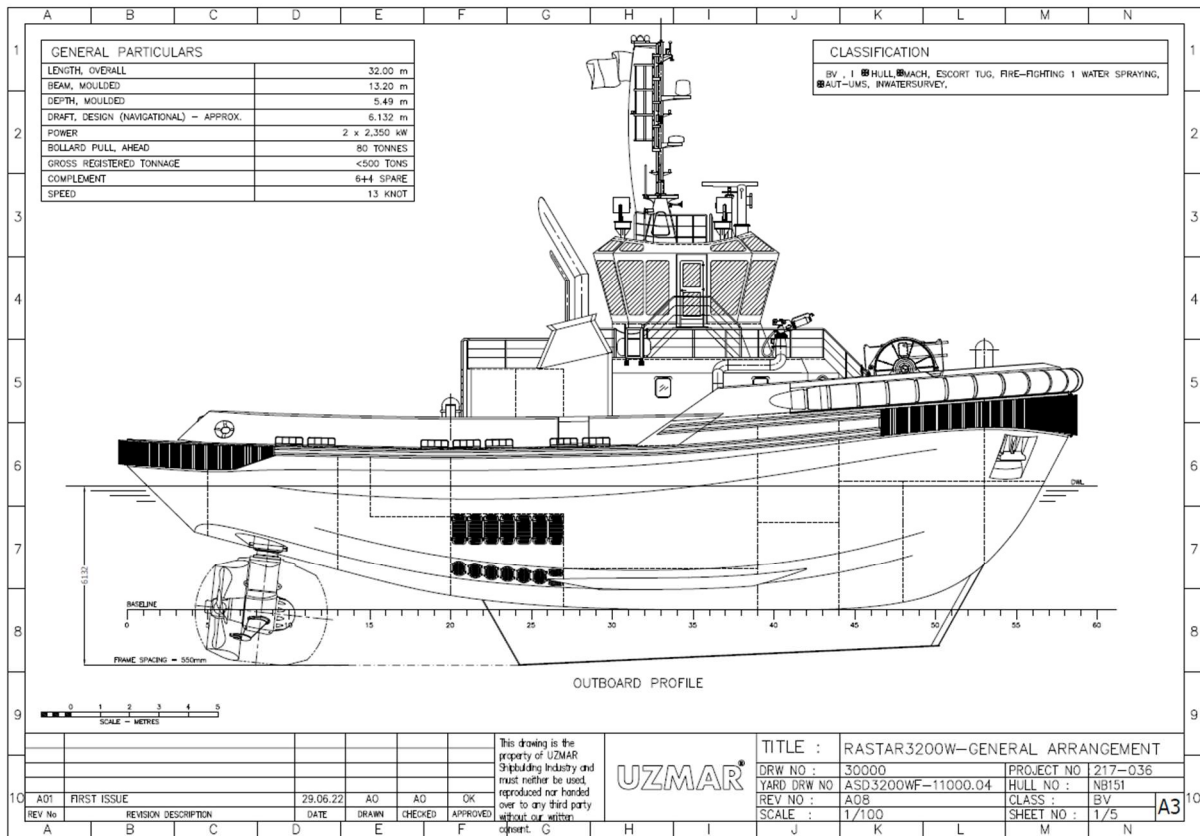


Svitzer Elizabeth



Callsign	MAXB4	Accommodation	10 berths in 6 cabins
Flag State	United Kingdom	Fresh Water (m3)	39
Port of Registry	Liverpool	Fuel (m3)	200
IMO Number	9965136	Foam (m3)	16
MMSI Number	232048132	Main Engine Make	Caterpillar
Owner	Svitzer Marine Limited	Main Engine Model	3516E
Classification Society	Bureau Veritas	Propeller Make	Kongsberg
Class Notation	I +Hull +Mach Escort Tug, FiFi 1 + Waterspray	Propeller Model	US255
Date of Delivery	25/05/2023	Generator Make	Caterpillar
Shipyard	Uzmar, Turkey	Generator Model	C4.4
Length overall (m)	32	Winch Make	Ibercisa
Beam (m)	13.8	Radio Area	A1, A2, A3
Draught (m)	6.2	Rescue Boat	Yes
Gross Tonnage	499		
Bollard Pull (t)	80		
Installed Power (kW)	4700		