

## Notice to Mariners N° 24 2025

### Port Approaches – Holm Channel Shoaling

**MARINERS ARE ADVISED** that most recent British Government surveys have identified significant shoaling within the Holm Channel due to shifting sandbanks. Available depths are now less than 10m aCD. The minimum depths are in approximate position 52°33'.55N 001°47'.95E. Please see below extracts from BA 1534 (ed. 19);

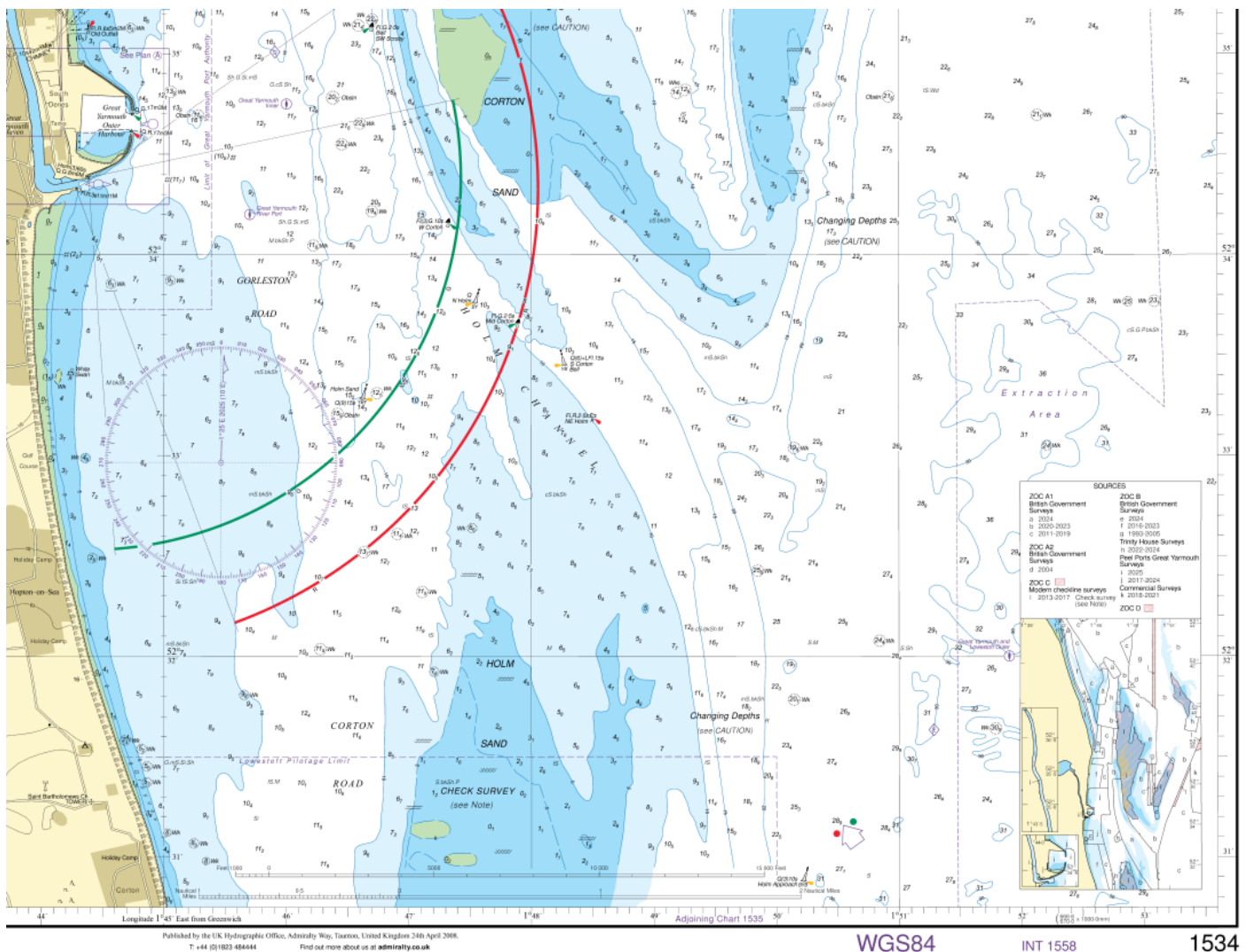
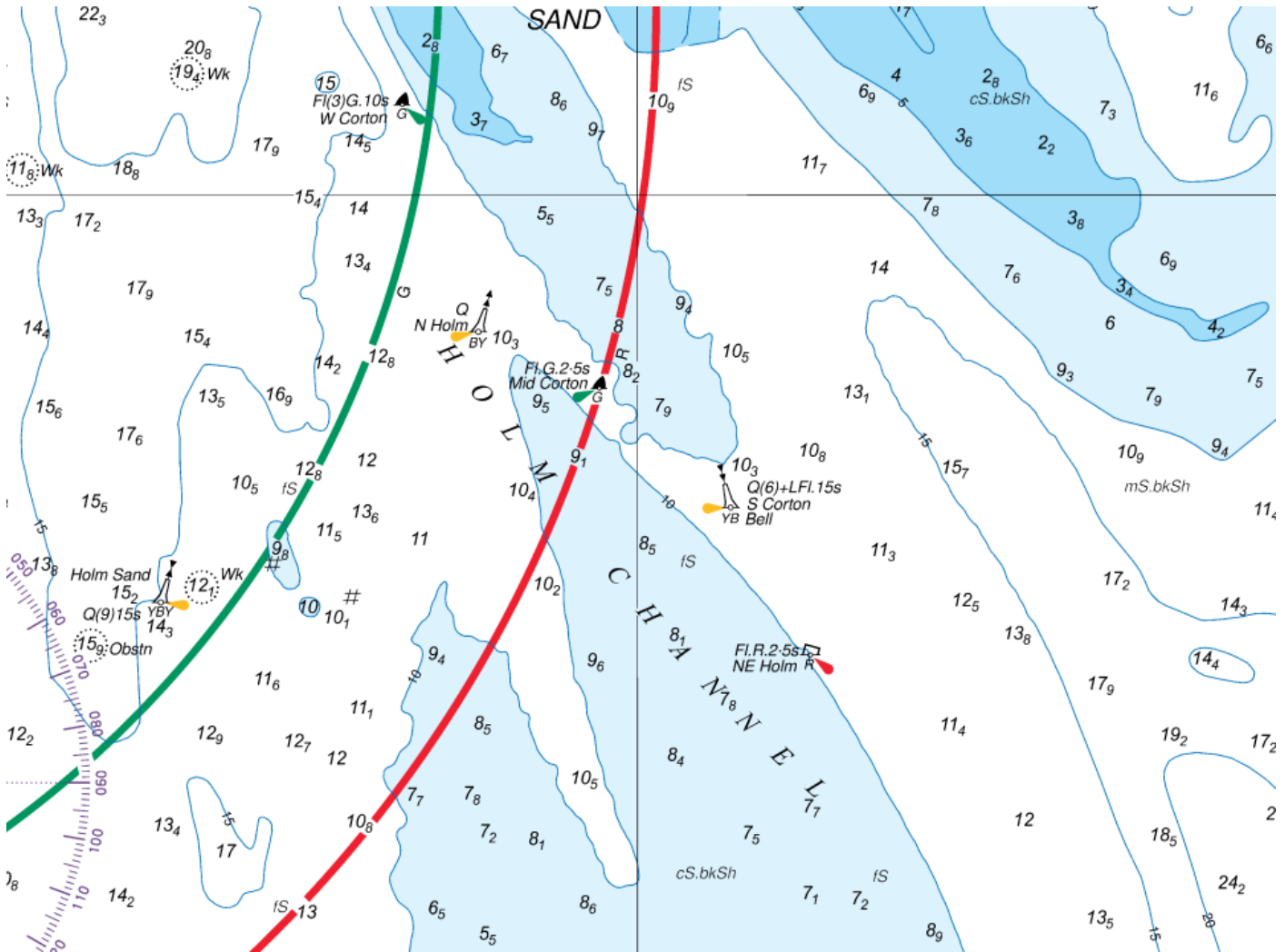


Figure 1 – Extract of BA 1534 (edition 19) showing Holm Channel and surrounding area



**Figure 2 – Extract from BA 1534 (edition 19) showing Holm Channel detail**

Mariners are advised to consult the latest British Admiralty chart 1534 – Great Yarmouth and Approaches, consider this information when passage planning, and explore alternative routing if deemed necessary.

Please contact the Great Yarmouth Harbour Office with any questions;

**Tel:** +44(0)1493 335501

**Email:** [greatyarmouthharbouoffice@peelports.com](mailto:greatyarmouthharbouoffice@peelports.com)

**Marine Operations Department  
Peel Ports Great Yarmouth**

Notice Issued:

17<sup>th</sup> June 2025