

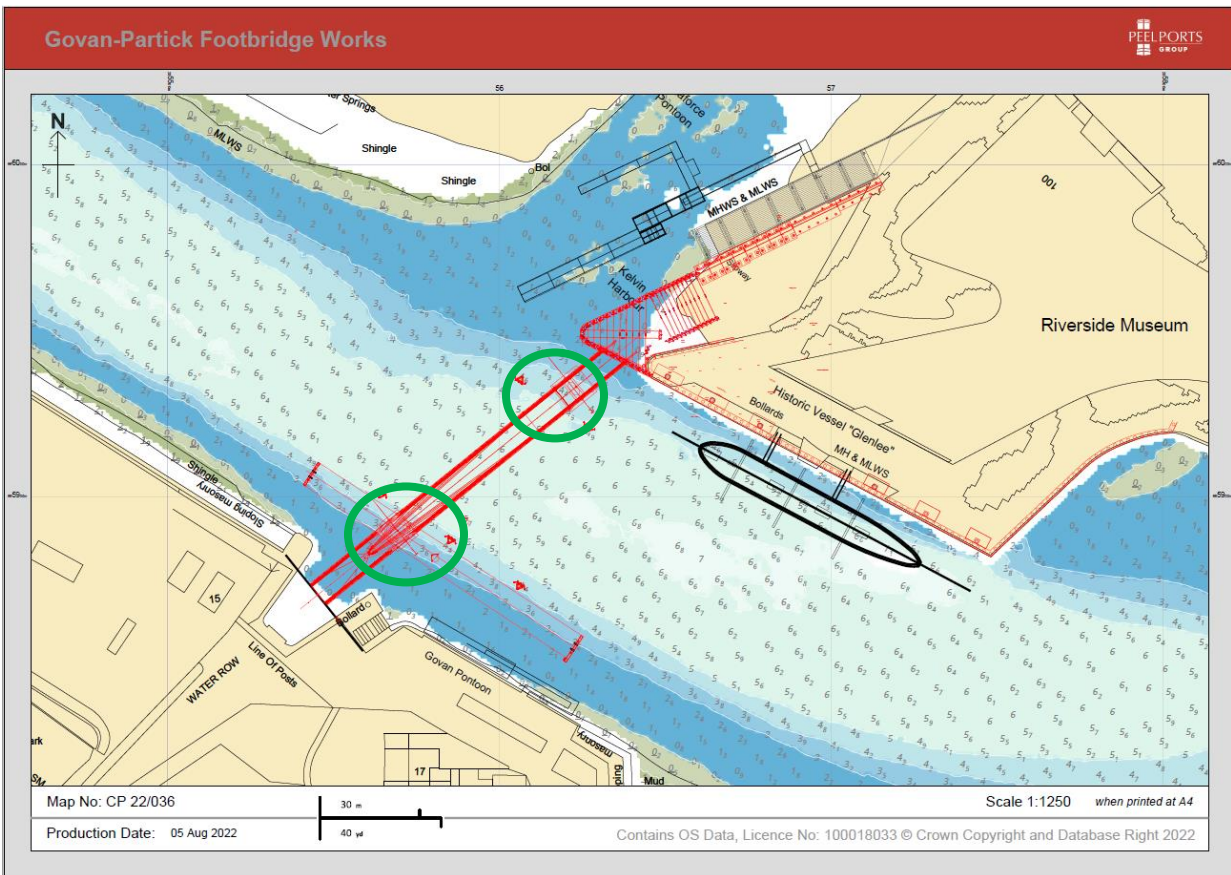
NOTICE TO MARINERS No 47/23

RIVER CLYDE – CONSTRUCTION OF GOVAN TO PARTICK FOOTBRIDGE

Chart 2007 Plan D

Mariners are advised that works associated with building a new opening footbridge across the River Clyde between Govan and Partick are ongoing. Cofferdams have been established to enable bridge pier construction and new fenders and bridge locking piles have been installed. The green circles indicate the locations of the cofferdams. Temporary pontoons are also in place on the north side of the River to facilitate access to the construction works. The bridge span is not yet in place. A safety boat is in operation to support the works as required.

Mariners are requested to navigate with caution in this area and pass the construction site at appropriate speed.



Estuary Radio may be contacted on VHF Ch 12 or on ☎ 0151 949 6651.