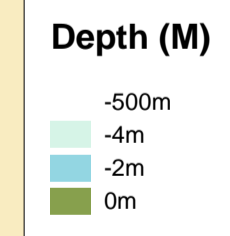


**MERSEY DOCKS AND HARBOUR COMPANY LTD**  
 Gary Doyle  
 Group Harbour Master  
 Liverpool Docks

**LPD001\_2\_2023\_005**  
**Seaforth Dock Centre & East**

**DEPTHS**  
 Depths are in metres and are reduced to chart datum being 4.93m below Ordnance Datum (Newlyn), which is approximately the level of Lowest Astronomical Tide.

**HEIGHTS**  
 Heights are in metres. Underlined figures show heights above Chart Datum.

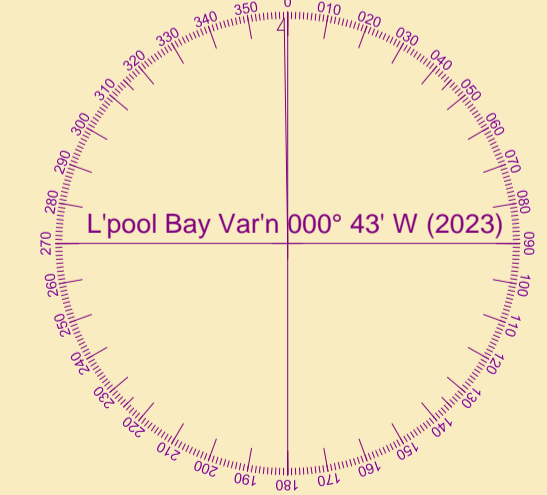


**POSITIONS**  
 Positions are referred to OSGB36 National Grid Datum.

**UKHO & NTMS**  
 When using this chart please refer to UKHO Admiralty Publications and also local Notice to Mariners and Navigational Warnings.

**TOPOGRAPHY**  
 The shore features on this chart are based largely on Ordnance Survey digital mapping data with permission of HMSO. © Crown Copyright 2023. Peel Licence Number 100018033.

**FLATS & SANDBANKS**  
**CAUTION OWING TO FREQUENT CHANGES IN DEPTHS AND POSITIONS OF FLATS AND SANDBANKS THIS CHART SHOULD BE USED WITH CAUTION.**



Vessel :	Porth Wen
Surveyed by:	VO
Processed by:	VO
Checked by:	WLH
Surveyed:	12th & 17th May 2023
Issued:	18th May 2023

SCALE 1:1250 at A1

