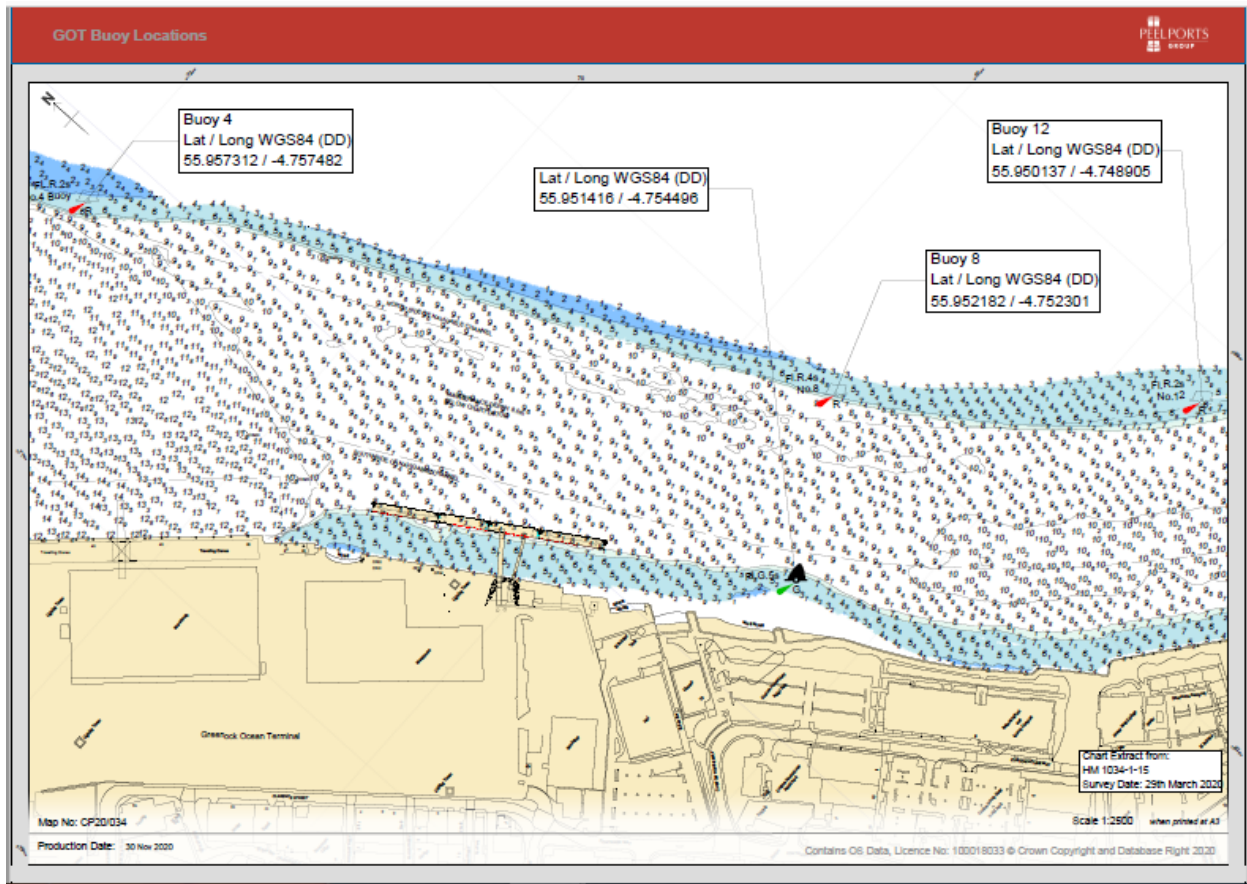


NOTICE TO MARINERS No 03/22

FIRTH OF CLYDE – GREENOCK OCEAN TERMINAL - RELOCATION OF LATERAL MARKS

Chart 1994

Mariners are advised that the following lateral marks remain in the positions indicated on the chart extract below. An additional lateral mark is planned to be established opposite the new pontoon. The temporary positions will be reviewed and adjusted to become permanent in 2022.



Passing vessels are reminded to navigate this area with particular caution leaving a wide berth.

Estuary Radio may be contacted on VHF 12 or on ☎ 0151 949 6651.