

NOTICE TO MARINERS No 32/24

FIRTH OF CLYDE

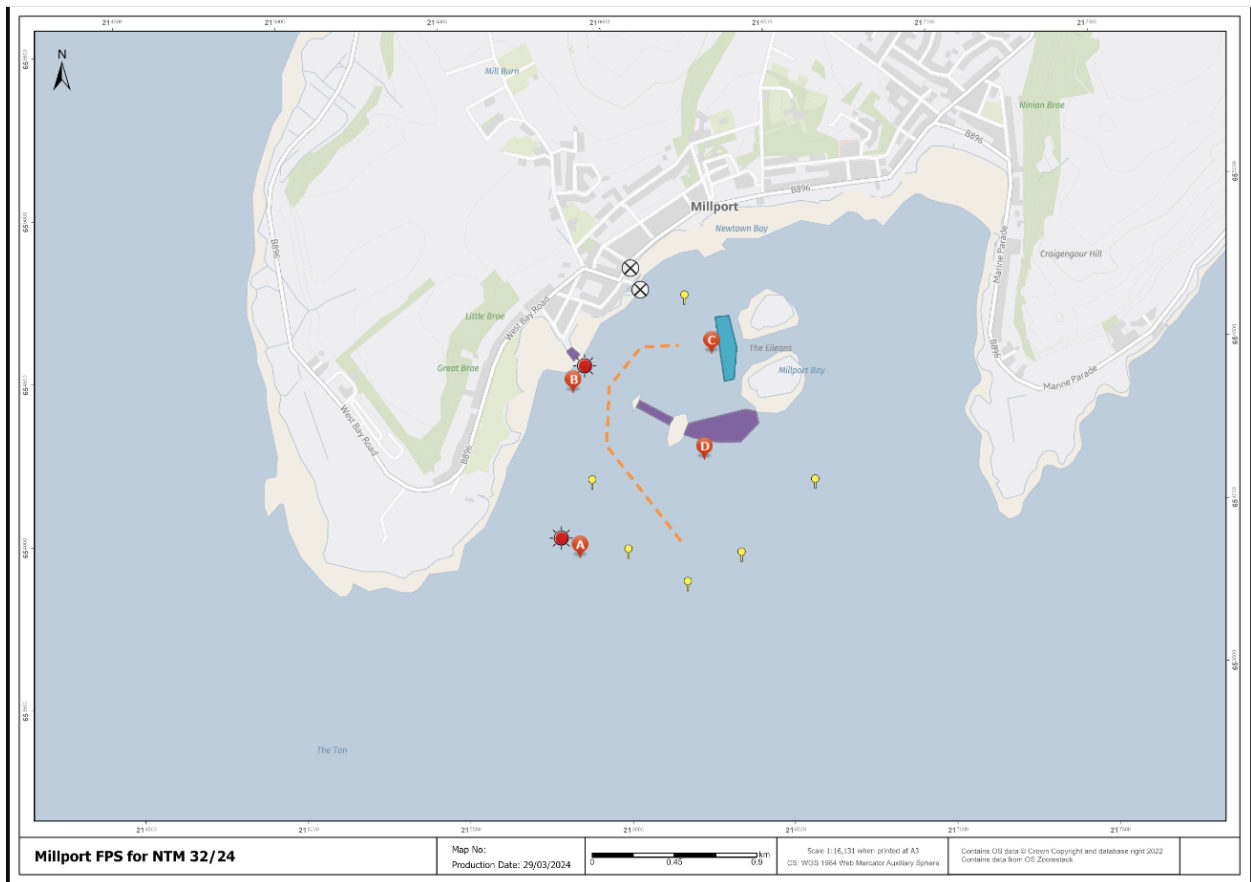
MILLPORT FLOOD PROTECTION SCHEME




Chart 1907

Mariners are advised that work to construct a new offshore breakwater as part of the Millport Flood Protection Scheme in Millport Bay has now been completed.

Four temporary marker buoys established to mark the work area boundary remain in place and the leading lights have been extinguished. Work to install a new lighting scheme is ongoing with new lights established at The Clach and The Leug.

North Ayrshire Council have also confirmed that 18 visitor moorings have been established in Millport Bay.



A	The Clach Fl R 2s 55°44.653'N 004°56.084'W	C	Visitor Moorings
B	Foul Port Fl R 4s 55°44.925'N 004°56.055'W	D	New Breakwater
	Leading Light Extinguished		Temporary Marker Buoys
	Route to Visitor Moorings		

Temporary Buoys – Light Characteristics	
Yellow Marker Buoy No 1	Fl.Y 0.5, 1.0 (on, off, on ...)
Yellow Marker Buoy No 2	Fl.Y 0.5, 3.5 (on, off, on ...)
Yellow Marker Buoy No 3	Fl.Y 1.0, 5.5 (on, off, on ...)
Yellow Marker Buoy No 4	Fl.Y 0.5, 5.5 (on, off, on ...)
Barge Mooring Buoy	Unlit
Wave Monitoring Buoy	Fl(5).Y.20s

Mariners are requested to proceed with caution when transiting these areas. It should be noted that the breakwater is currently unlit.

Estuary Radio may be contacted on VHF Ch12 or 0151-949 6651 (Recorded Line).