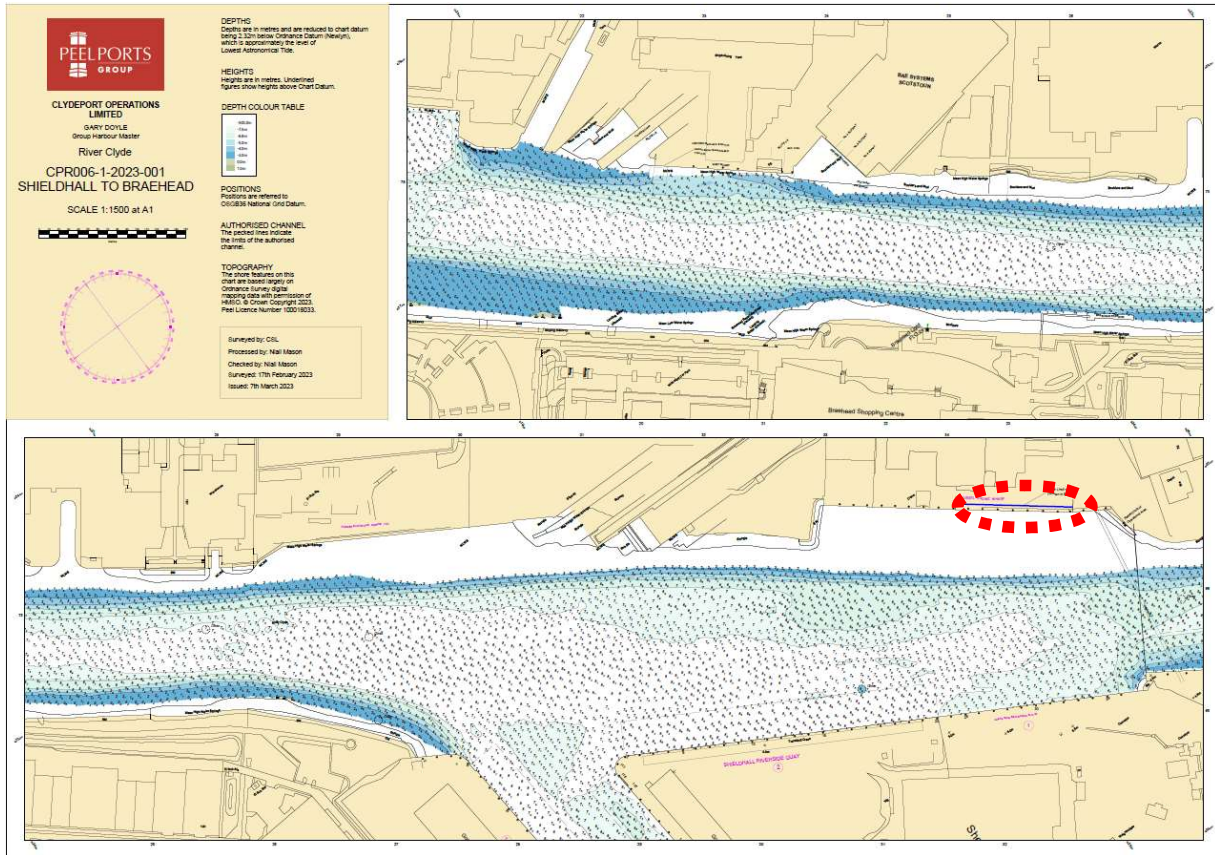
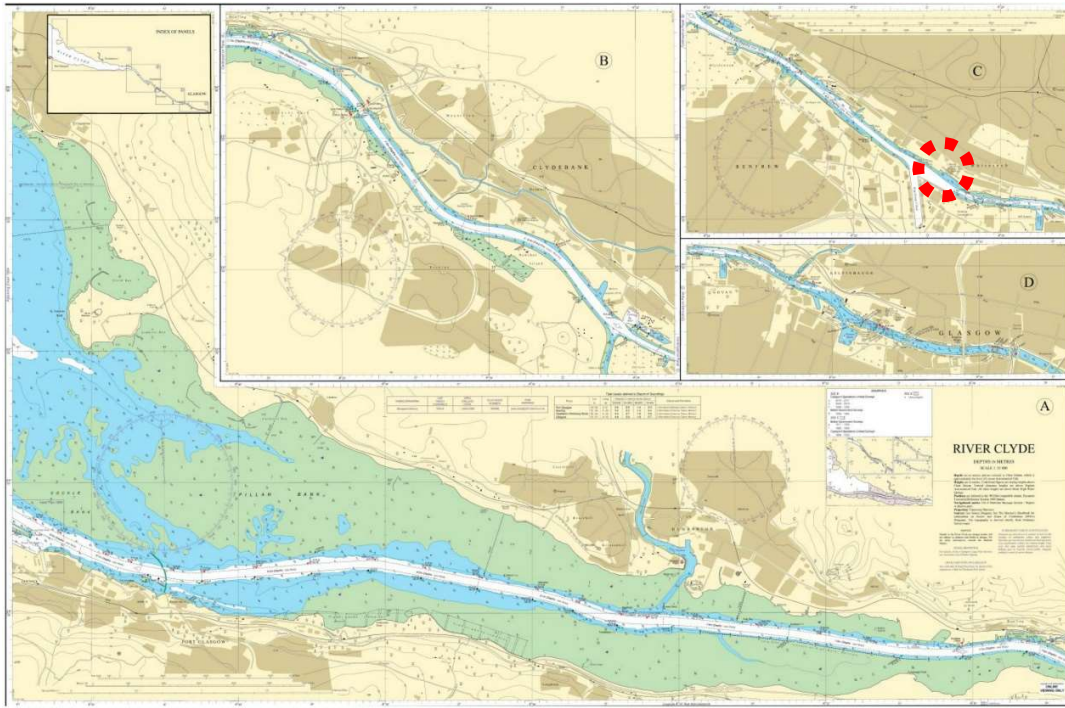


BERTH DATA SHEET

DIESEL WHARF - GLASGOW



BERTH DATA SHEET

DIESEL WHARF - GLASGOW



PARTICULARS/BASIC INFORMATION

Admiralty Chart No.	2007 Plan C	Survey Drawing No	CPR 006-1
Min. Depth Alongside	Refer Survey Drawing	Fendering	None
Quay Design	Solid concrete wharf	Avg Water Density	1005.5 kg/m ³
Latitude	55°52.31'N	Longitude	004°20.69'W
Quay length overall	140m	Eastings/Northings	415852, 6192640
No of berths	1	SWL Bollards	Non tested
Max vessel LOA	120m	Avg bollard spacing	35m
Max vessel beam	No restriction	Line of the berth	118°/298°
Air Draught restrictions	Erskine Bridge**	Quayside SWL	
ISPS Status	Compliant	Height of cope edge*	7.07m

*from Chart Datum

** up to 49.8m from MHWS unrestricted, up to 53.3m from MHWS 3 months' notice

QUAYSIDE FACILITIES – BY PRIOR ARRANGEMENT

Fresh Water	No	Shore Power	No
Port Waste	On request	Cranes	Cargo loaders

TIDAL INFORMATION – BASED ON Glasgow

HAT	5.3m	MHWS	4.8m
MHWN	3.9m	MLWN	1.8m
MLWS	0.7m	LAT	-0.2m
Comments			

BERTH OPERATOR

NAME	EMR	CONTACT DETAILS	0141 954 9371
------	-----	-----------------	---------------

COMMENTS:

This berth is used for export of scrap metal.

Shallow patches to the west of the berth.