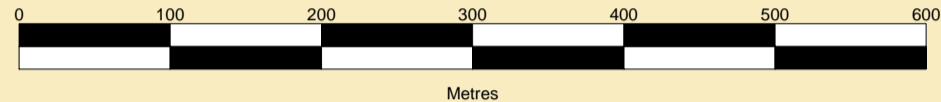




PORT OF SHEERNESS LIMITED
 GARY DOYLE
 Group Harbour Master
 Thames Estuary
1073-23-001
GREAT NORE ANCHORAGES

SCALE 1:5000 at A1



DEPTHS
 Depths are in metres and are reduced to chart datum using 2.80m for Chatham and 2.90m for Sheerness below OD(N), with linear interpolation along channel centre line.

HEIGHTS
 Heights are in metres. Underlined figures show heights above Chart Datum.

DEPTH COLOUR TABLE

Light Green	(-1.5m,0m)
Light Blue	(0m,5m)
Medium Blue	(5m,11m)
Dark Blue	(11m,16m)
White	(>=16m)

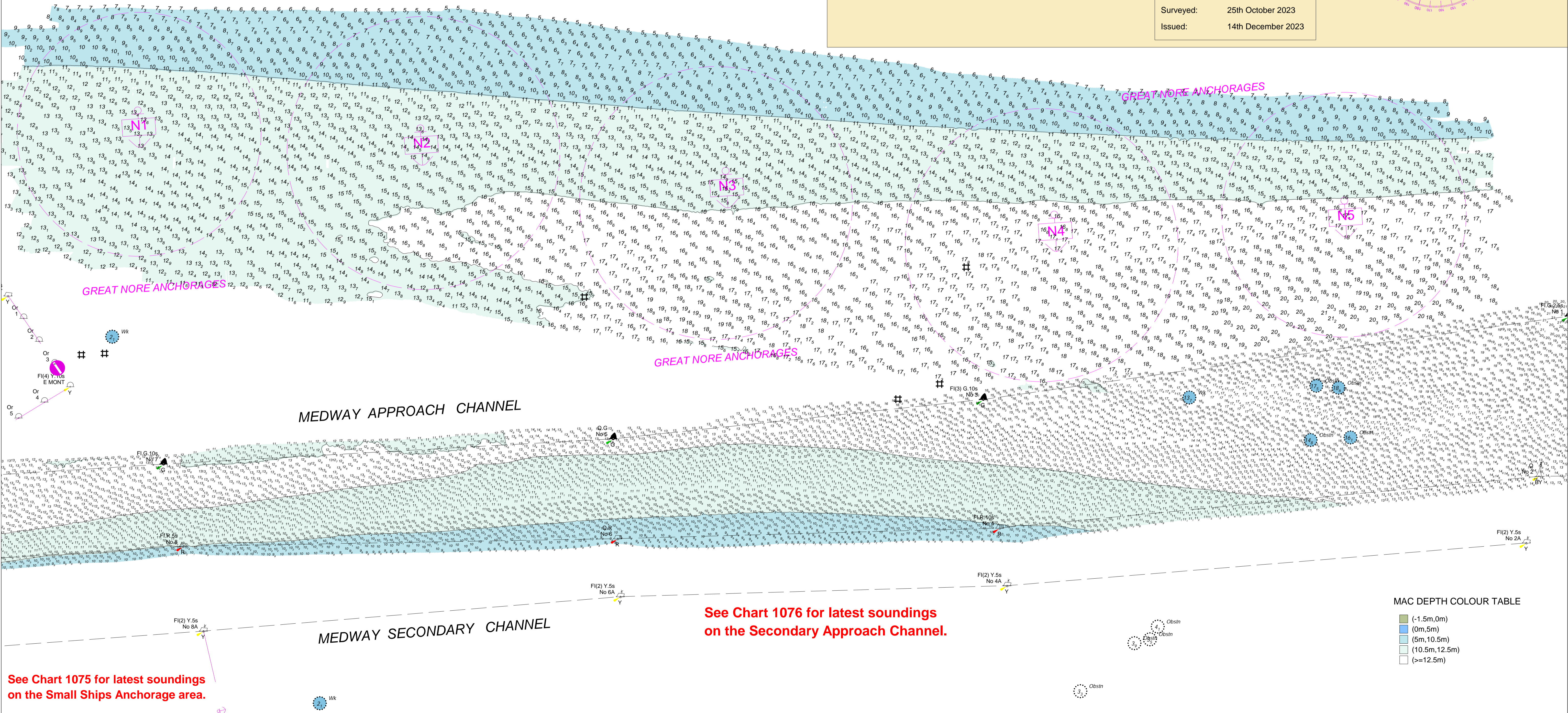
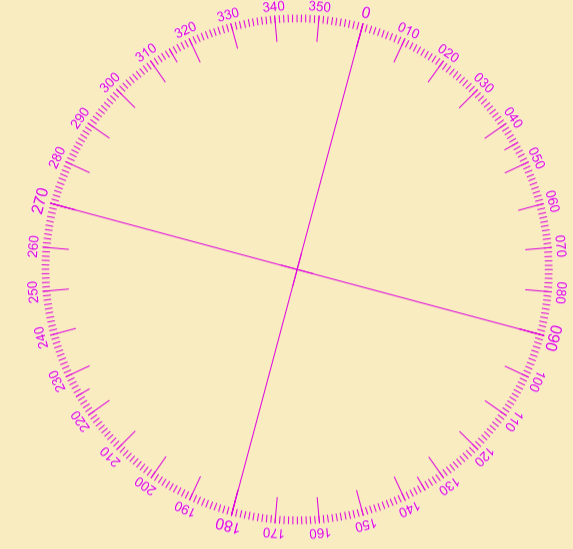
POSITIONS
 Positions are referred to OSGB36 National Grid Datum.

AUTHORISED CHANNEL / ANCHORAGES
 The black pecked lines indicate the limits of the authorised channel and the pink pecked lines indicate the Great Nore & MAC anchorages / SS.Richard Montgomery exclusion zone.

Surveyed by:	PLA
Processed by:	NM
Checked by:	NM
Surveyed:	25th October 2023
Issued:	14th December 2023

NOTES
 While every care has been taken in the preparation of the information relating to the soundings shown on this chart, PEEL PORTS MEDWAY make no warranty as to the accuracy and will not accept any responsibility whatsoever arising from errors and omissions or for any consequence arising therefrom.

TOPOGRAPHY
 The shore features on this chart are based largely on Ordnance Survey digital mapping data with permission of HMSO. © Crown Copyright 2023. Peel Licence Number 100018033.



See Chart 1076 for latest soundings on the Secondary Approach Channel.

See Chart 1075 for latest soundings on the Small Ships Anchorage area.

MAC DEPTH COLOUR TABLE

Light Green	(-1.5m,0m)
Light Blue	(0m,5m)
Medium Blue	(5m,10.5m)
Dark Blue	(10.5m,12.5m)
White	(>=12.5m)