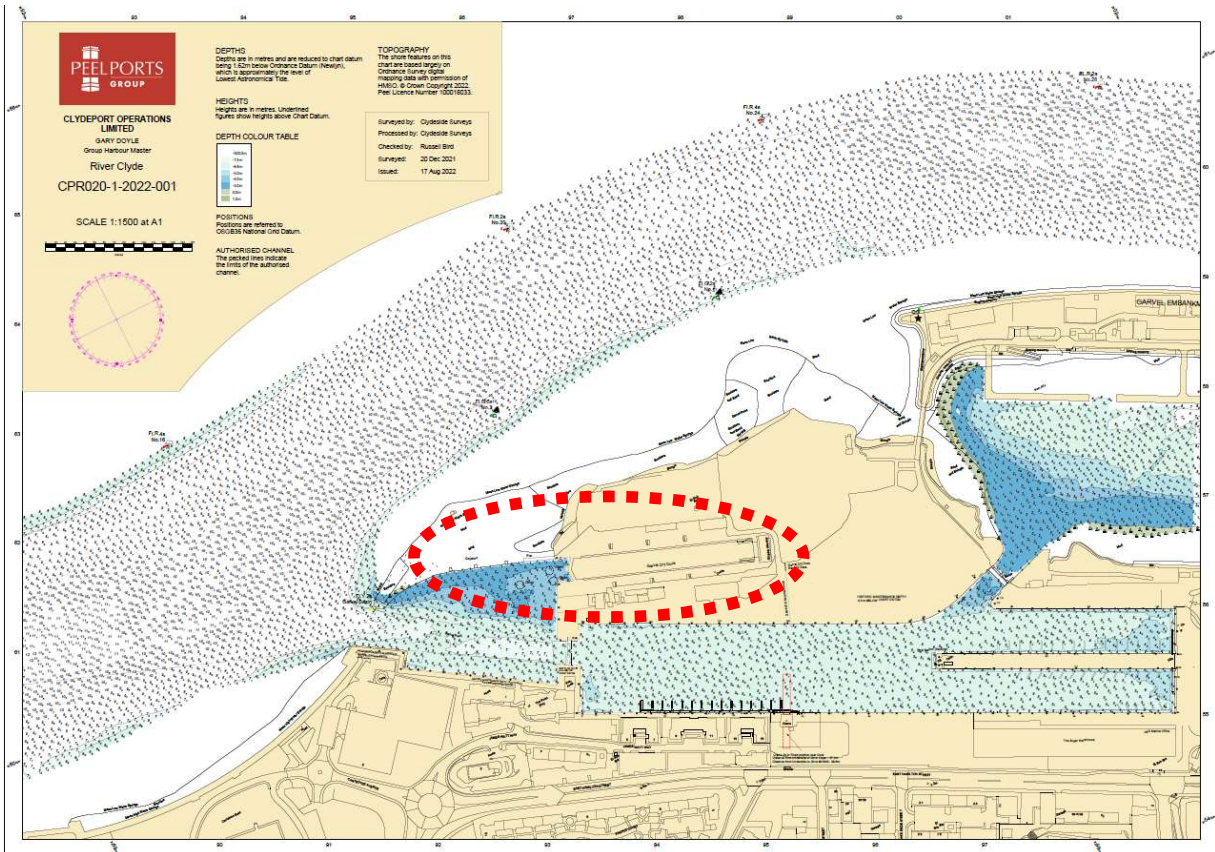
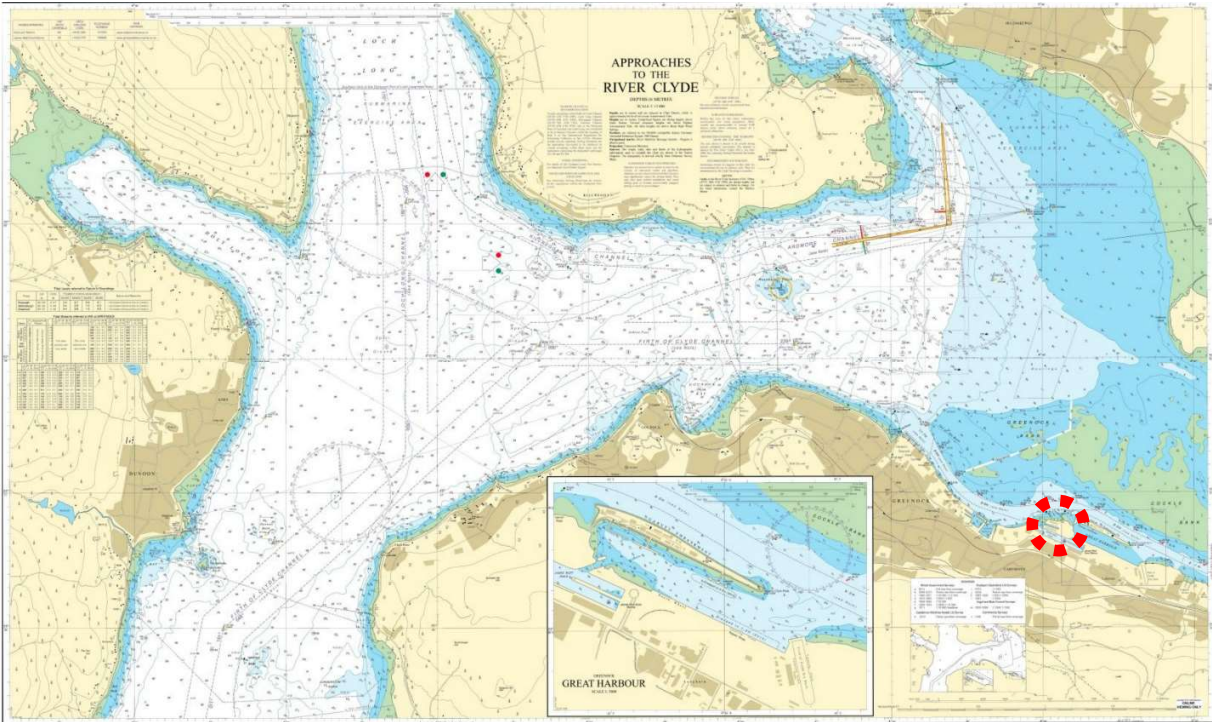


BERTH DATA SHEET

GARVEL DRY DOCK - GREENOCK



BERTH DATA SHEET

GARVEL DRY DOCK - GREENOCK



PARTICULARS/BASIC INFORMATION

Admiralty Chart No.	1994	Survey Drawing No	CPR 020-1
Min. Depth Alongside	Refer Survey Drawing	Fendering	None
Quay Design	Dry dock	Avg Water Density	1018 kg/m ³
Latitude	55°56.75'N	Longitude	004°43.90'W
Drydock length overall	193m	Eastings/Northings	391854, 6201405
Drydock width	21.3m	SWL Bollards	
No of berths	Dry Dock	Avg bollard spacing	20m
		Line of the berth	108°/288°
Air Draught restrictions	None	Quayside SWL	
ISPS Status	Compliant	Height of cope edge*	N/A

*from Chart Datum

QUAYSIDE FACILITIES – BY PRIOR ARRANGEMENT

Fresh Water	Yes	Shore Power	Yes
Port Waste	Yes	Cranes	90t mobile crane

TIDAL INFORMATION – BASED ON GREENOCK

HAT	3.9m	MHWS	3.4m
MHWN	2.8m	MLWN	1.0m
MLWS	0.3m	LAT	-0.3m
Comments			

BERTH OPERATOR

NAME	Dales Marine	CONTACT DETAILS	01475 725372
------	--------------	-----------------	--------------

COMMENTS:

Dolphins and pier on north side of approach to dock in poor condition and vessels should use caution when resting on.