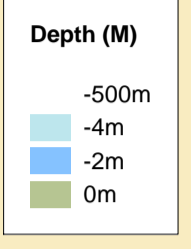




**DEPTHS**  
Depths are in metres and are reduced to chart datum being 4.93m below Ordnance Datum (Newlyn), which is approximately the level of Lowest Astronomical Tide.

**HEIGHTS**  
Heights are in metres. Underlined figures show heights above Chart Datum.

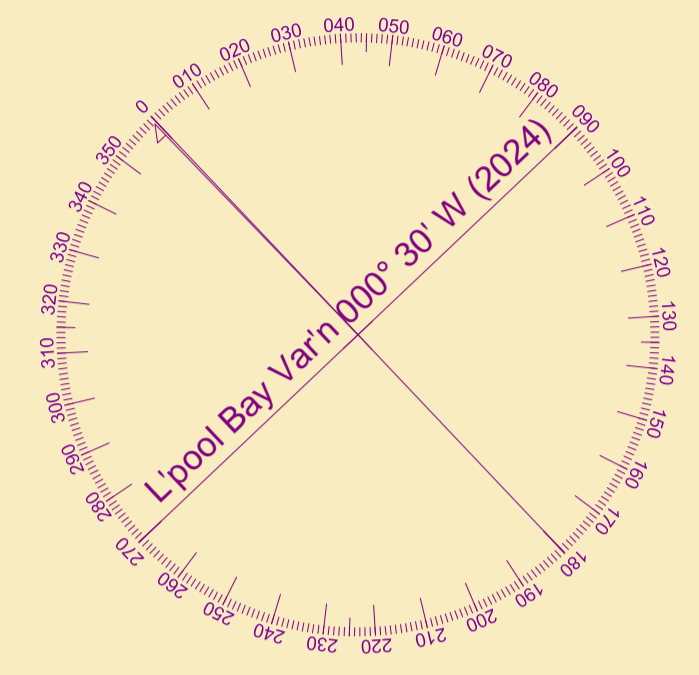


**TOPOGRAPHY**  
The shore features on this chart are based largely on Ordnance Survey digital mapping data with permission of HMSO. © Crown Copyright 2024. Peel Licence Number 100018033.

**FLATS & SANDBANKS**  
**CAUTION OWING TO FREQUENT CHANGES IN DEPTHS AND POSITIONS OF FLATS AND SANDBANKS THIS CHART SHOULD BE USED WITH CAUTION.**

**POSITIONS**  
Positions are referred to OSGB36 National Grid Datum.

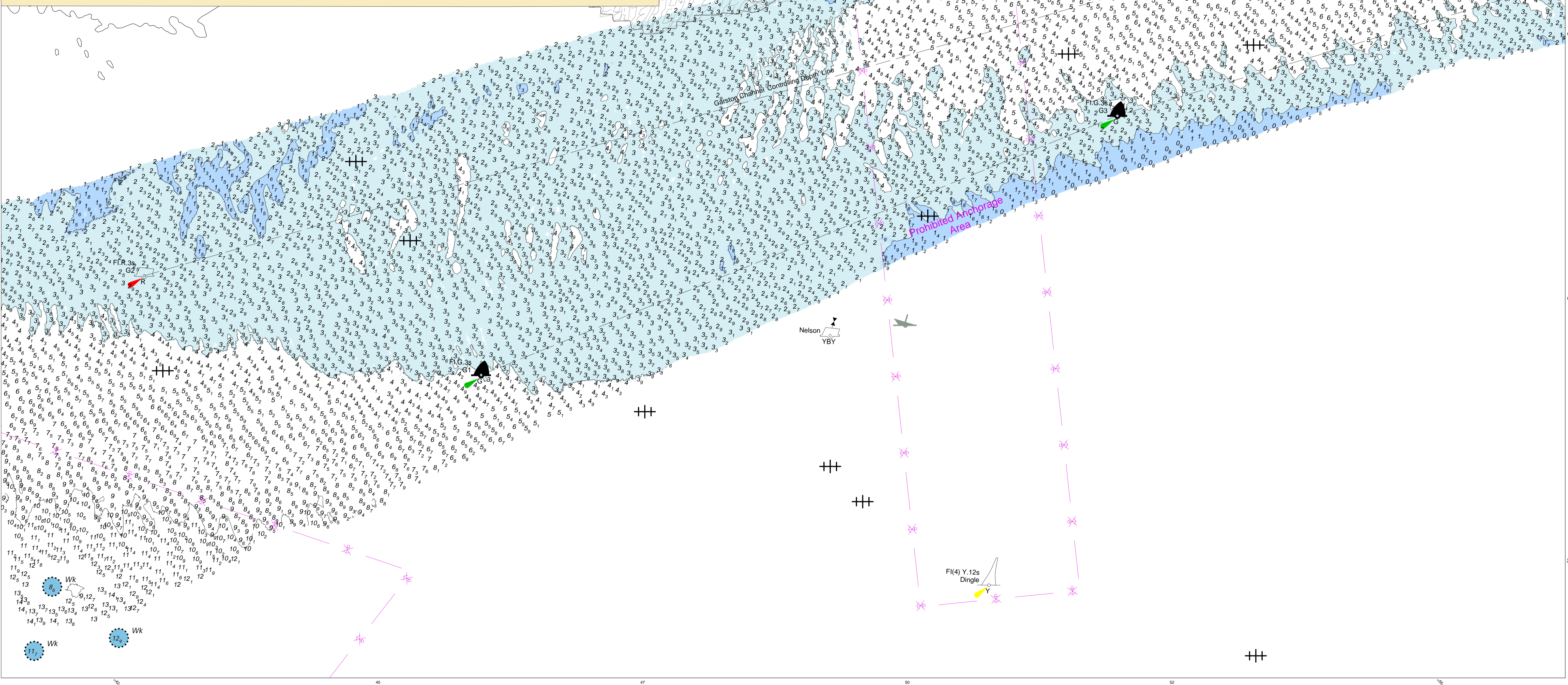
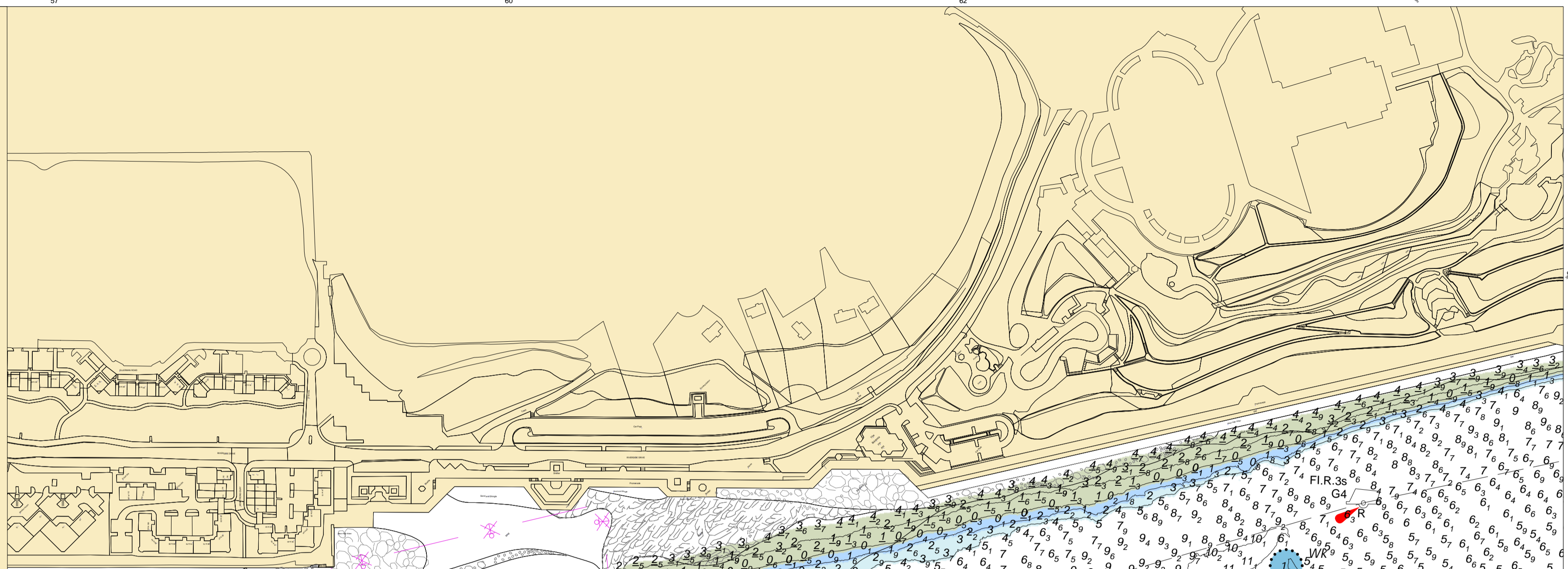
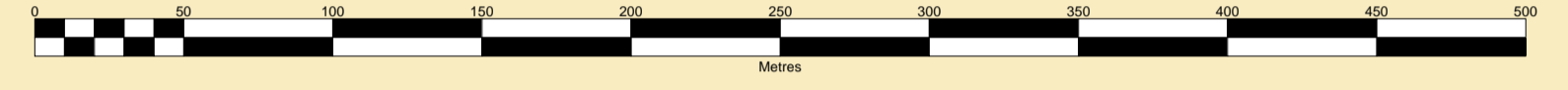
**UKHO & NTMS**  
When using this chart please refer to UKHO Admiralty Publications and also local Notice to Mariners and Navigational Warnings.



**MERSEY DOCKS AND HARBOUR COMPANY LTD**  
Gary Doyle  
Group Harbour Master  
River Mersey  
LPR002\_6\_2024\_002  
Garston Bar

Vessel:	Royal Charter
Surveyed by:	EM
Processed by:	EM
Checked by:	EM
Surveyed:	8th April 2024
Issued:	9th April 2024

SCALE 1:2500 at A1



Nelson  
YBY

Fi(4) Y.12s  
Dingle

++