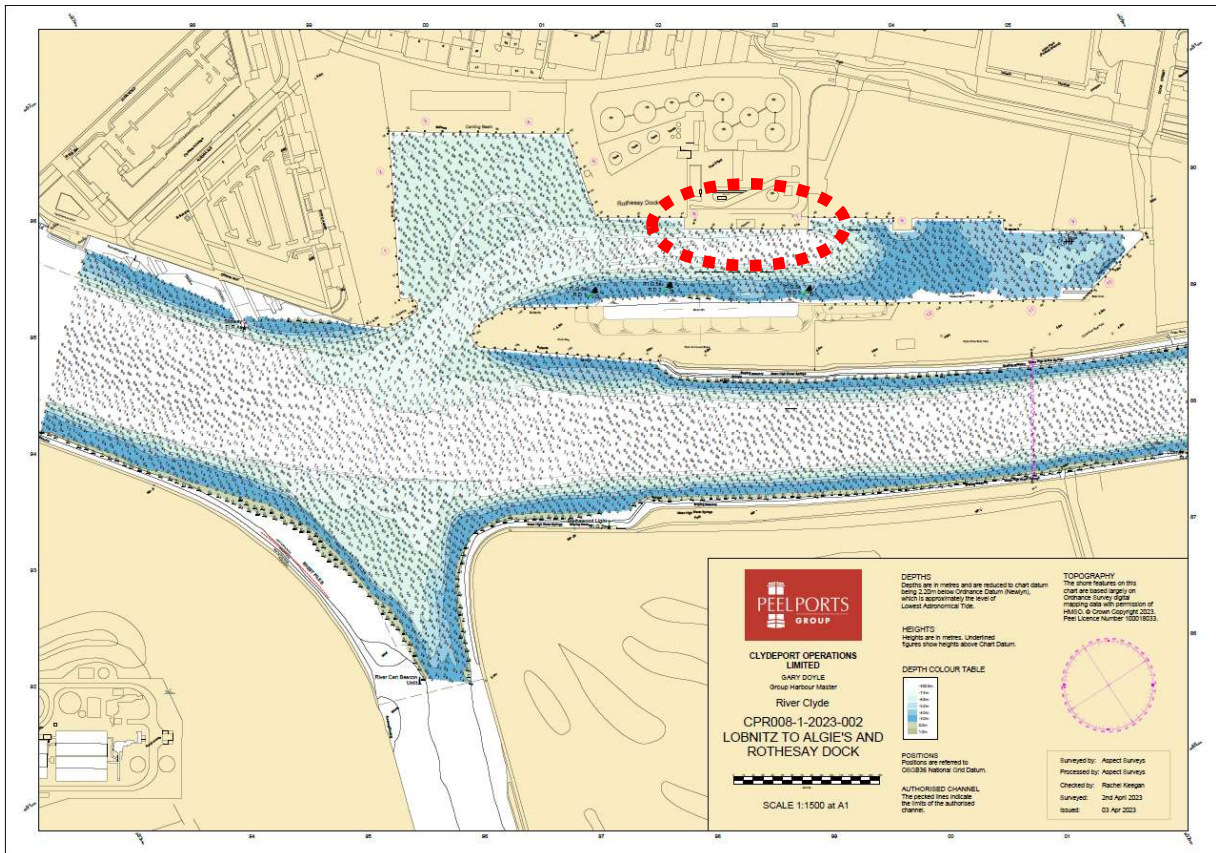
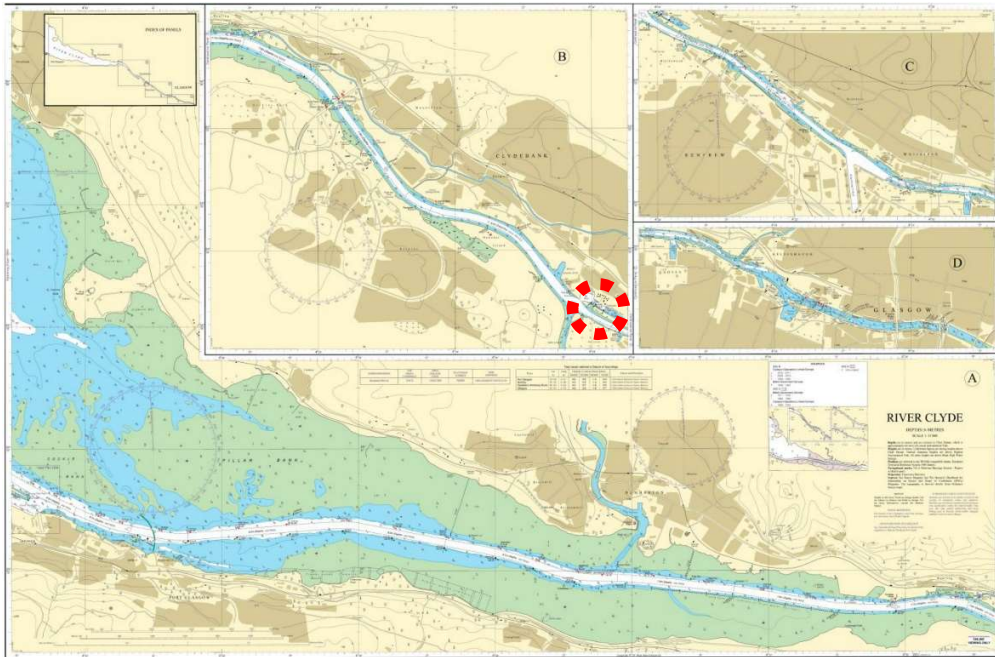


BERTH DATA SHEET

ROTHESAY DOCK FUEL TERMINAL - CLYDEBANK



V5 August 2023

BERTH DATA SHEET

ROTHESAY DOCK FUEL TERMINAL - CLYDEBANK



PARTICULARS/BASIC INFORMATION

Admiralty Chart No.	2007 Plan B	Survey Drawing No	CPR 008-1
Min. Depth Alongside	Refer Survey Drawing	Fendering	Yokohama fenders
Quay Design	Solid concrete	Avg Water Density	1006.6 kg/m ³
Latitude	55°53.55'N	Longitude	004°23.86'W
Quay length overall	127m	Eastings/Northings	412591, 6194998
No of berths	1	SWL Bollards	
Max vessel LOA	160m	Avg bollard spacing	25m
Max vessel beam	23.30m	Line of the berth	122°/302°
Air Draught restrictions	Erskine Bridge	Quayside SWL	
ISPS Status	Compliant	Height of cope edge*	6.93m

*from Chart Datum

** up to 49.8m from MHWS unrestricted, up to 53.3m from MHWS 3 months' notice

QUAYSIDE FACILITIES – BY PRIOR ARRANGEMENT

Fresh Water	No	Shore Power	No
Port Waste	Yes	Cranes	No

TIDAL INFORMATION – BASED ON Clydebank

HAT	5.1m	MHWS	4.5m
MHWN	3.7m	MLWN	1.6m
MLWS	0.6m	LAT	-0.1m
Comments			

BERTH OPERATOR

NAME	Interterminals	CONTACT DETAILS	0141 435 8000
------	----------------	-----------------	---------------

COMMENTS:

Rothesay Dock Fuel berth is used for the import of refined fuels

Berth 5 is not normally used as it is obstructed by the Fire Water Pump house for the fuel terminal

Max draught 8.7m (subject to sufficient UKC required for River transit), may arrive at this draught but must be able to discharge to the berth design depth of 6.7m by LW (+HoT). Current survey data is provided on <https://www.peelports.com/marine-information?port=clydeport> under 'Hydrographic Information' which should be consulted for latest berth depth information.

Refer to Clydeport Towage Matrix for guidance on tug requirements.

V5 August 2023