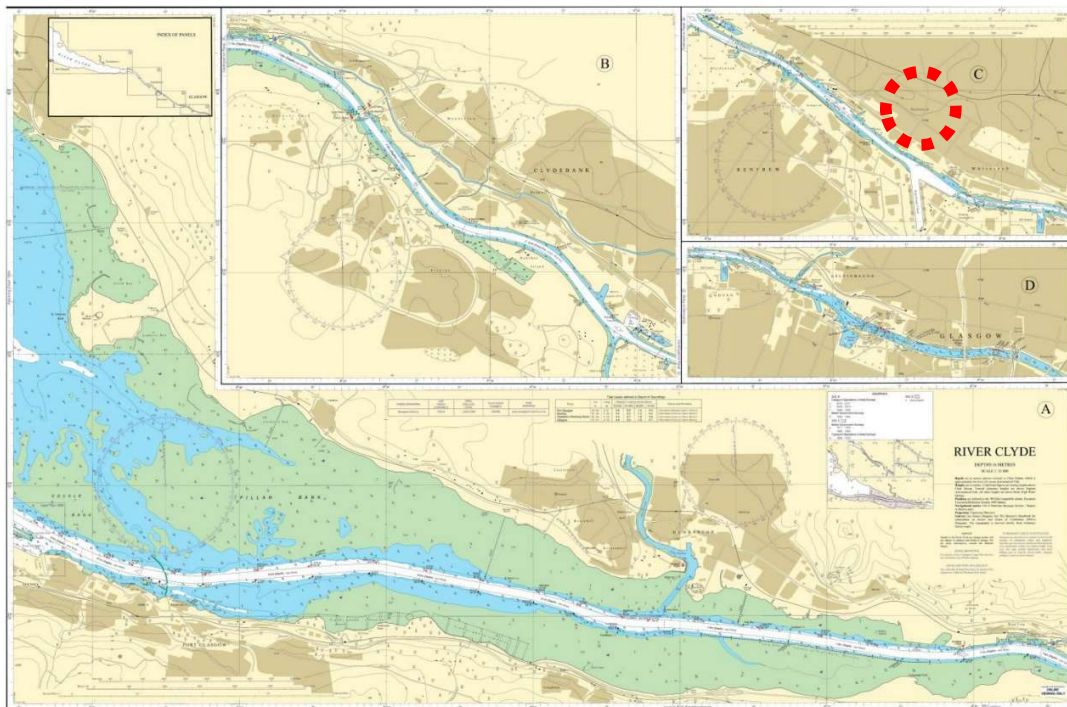


BERTH DATA SHEET

BAE SCOTSTOUN - GLASGOW



PARTICULARS/BASIC INFORMATION

Admiralty Chart No.	2007 Plan C	Survey Drawing No	CPR 007-1
Min. Depth Alongside	Refer Survey Drawing	Fendering	Nil
Quay Design	Dry dock	Avg Water Density	1006 kg/m ³
Latitude	55°52.99'N	Longitude	004°22.33'W
Quay length overall		Eastings/Northings	
No of berths	3 dry docks plus wet dock	SWL Bollards	20T + 54T
Max vessel LOA	1 Dock Length 160m Width 18.75m 2 Dock Length 185m Width 24.26m 3 Dock Length 207.3m Width 28.95m	Avg bollard spacing	Various
Max vessel beam		Line of the berth	090° / 270°
Air Draught restrictions	Erskine Bridge**	Quayside SWL	N/A
ISPS Status	Compliant	Height of cope edge*	N/A

*from Chart Datum

** up to 49.8m from MHWS unrestricted, up to 53.3m from MHWS 3 months' notice

BERTH DATA SHEET

BAE SCOTSTOUN - GLASGOW



QUAYSIDE FACILITIES – BY PRIOR ARRANGEMENT

Fresh Water	Yes	Shore Power	Yes
Port Waste	Yes	Cranes	Yes

TIDAL INFORMATION – BASED ON Glasgow

HAT	5.3m	MHWS	4.8m
MHWN	3.9m	MLWN	1.8m
MLWS	0.7m	LAT	-0.2m
Comments			

BERTH OPERATOR

NAME	BAE Systems	CONTACT DETAILS	0141 959 1207
------	-------------	-----------------	---------------

COMMENTS: