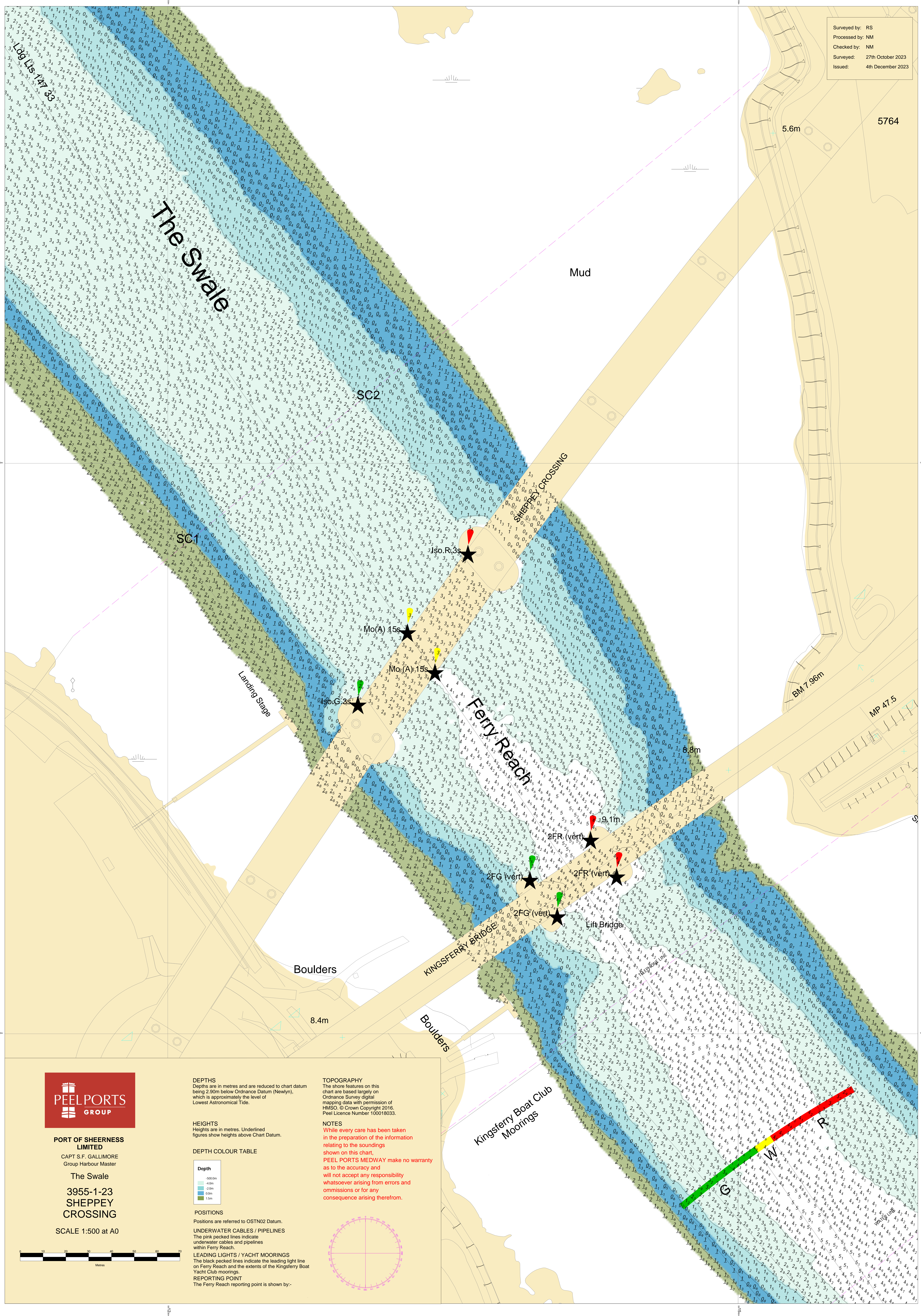


Surveyed by: RS  
 Processed by: NM  
 Checked by: NM  
 Surveyed: 27th October 2023  
 Issued: 4th December 2023

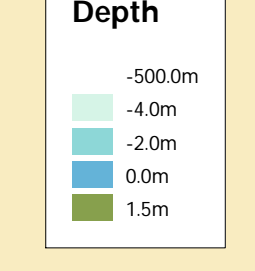


**PORT OF SHEERNESS LIMITED**  
 CAPT S.F. GALLIMORE  
 Group Harbour Master  
 The Swale  
 3955-1-23  
 SHEPPEY CROSSING  
 SCALE 1:500 at A0

**DEPTHS**  
 Depths are in metres and are reduced to chart datum being 2.90m below Ordnance Datum (Newlyn), which is approximately the level of Lowest Astronomical Tide.

**HEIGHTS**  
 Heights are in metres. Underlined figures show heights above Chart Datum.

**DEPTH COLOUR TABLE**



**POSITIONS**

Positions are referred to OSTN02 Datum.

**UNDERWATER CABLES / PIPELINES**

The pink pecked lines indicate underwater cables and pipelines within Ferry Reach.

**LEADING LIGHTS / YACHT MOORINGS**

The black pecked lines indicate the leading light line on Ferry Reach and the extents of the Kingsferry Boat Yacht Club moorings.

**REPORTING POINT**

The Ferry Reach reporting point is shown by:-

**TOPOGRAPHY**  
 The shore features on this chart are based largely on Ordnance Survey digital mapping data with permission of HMSO. © Crown Copyright 2016. Peel Licence Number 100018033.

**NOTES**  
 While every care has been taken in the preparation of the information relating to the soundings shown on this chart, PEEL PORTS MEDWAY make no warranty as to the accuracy and will not accept any responsibility whatsoever arising from errors and omissions or for any consequence arising therefrom.

