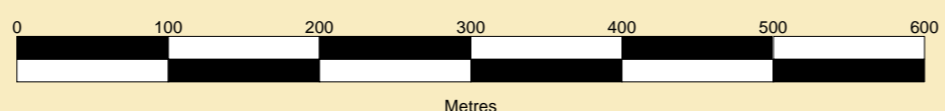


**HEYSHAM PORT LTD**  
 Gary Doyle  
 Group Harbour Master  
 Heysham Channel  
**HM003\_1\_2023\_001**  
 No. 5 Buoy to  
 Harbour Entrance  
 SCALE 1:5000 at A1



**DEPTHS**  
 Depths are in metres and are reduced to chart datum being 4.90m below Ordnance Datum (Newlyn), which is approximately the level of Lowest Astronomical Tide.

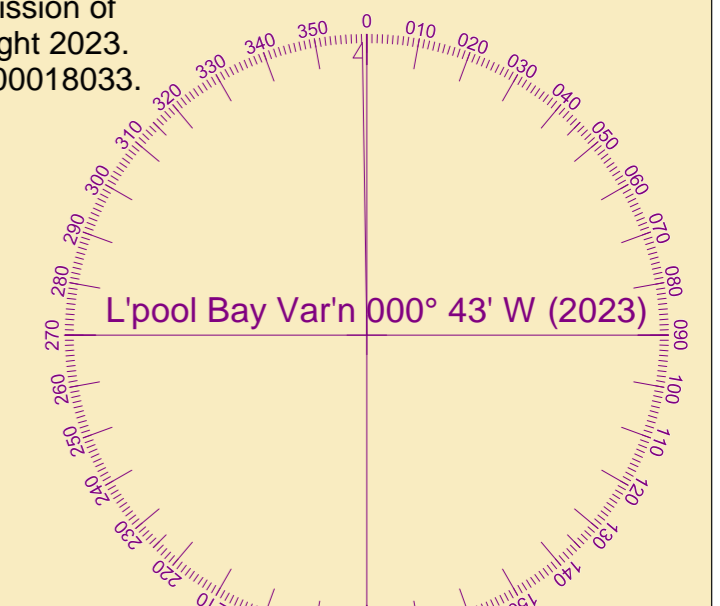
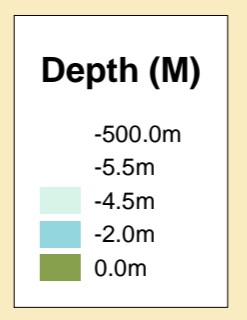
**HEIGHTS**  
 Heights are in metres. Underlined figures show heights above Chart Datum.

**POSITIONS**  
 Positions are referred to OSGB36 National Grid Datum.

**UKHO & NTMS**  
 When using this chart please refer to UKHO Admiralty Publications and also local Notice to Mariners and Navigational Warnings.

**FLATS & SANDBANKS**  
**CAUTION OWING TO FREQUENT CHANGES IN DEPTHS AND POSITIONS OF FLATS AND SANDBANKS THIS CHART SHOULD BE USED WITH CAUTION.**

**TOPOGRAPHY**  
 The shore features on this chart are based largely on Ordnance Survey digital mapping data with permission of HMSO. © Crown Copyright 2023. Peel Licence Number 100018033.



Surveyed by:	RK
Processed by:	RK
Checked by:	RK
Surveyed:	19th & 20th June 2023
Issued:	22nd June 2023

