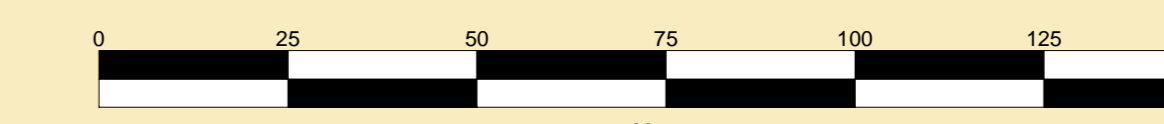




**CLYDEPORT OPERATIONS LIMITED**  
**GARY DOYLE**  
 Group Harbour Master

Firth of Clyde  
**HM 1094-1-46**  
**ARDROSSAN HARBOUR AND APPROACHES**

SCALE 1:1000 at A0



**DEPTHS**  
 Depths are in metres and are reduced to chart datum being 1.60m below Ordnance Datum (Newlyn), which is approximately the level of Lowest Astronomical Tide.

**HEIGHTS**  
 Heights are in metres. Underlined figures show heights above Chart Datum.

**DEPTH COLOUR TABLE**

Light Blue	(-1.4m, 0m)
Blue	(0m, 4m)
Light Green	(4m, 5.2m)
Yellow	(5.2m, 5.5m)
White	(>=5.5m)

**POSITIONS**  
 Positions are referred to OSGB36 National Grid Datum.

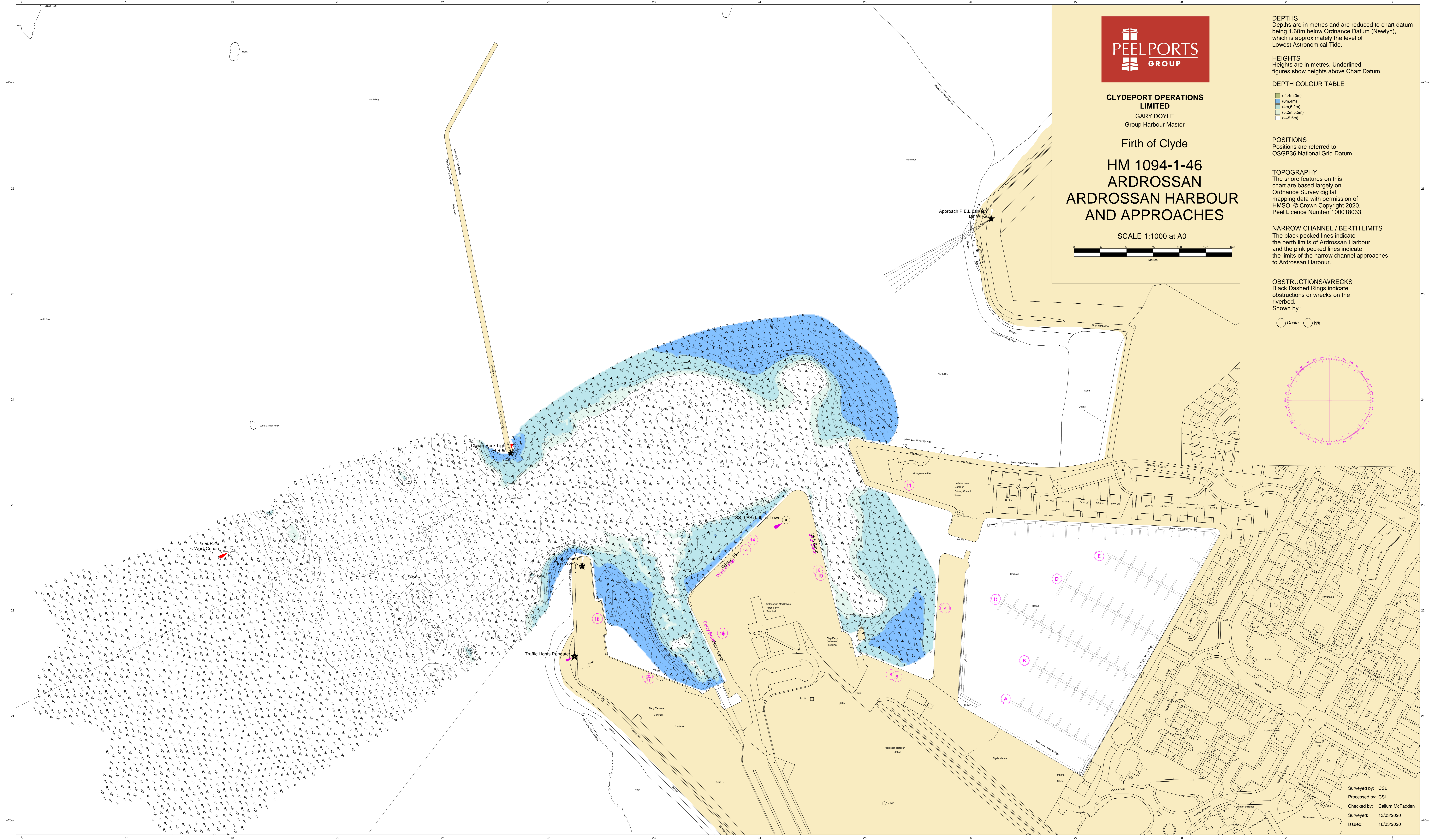
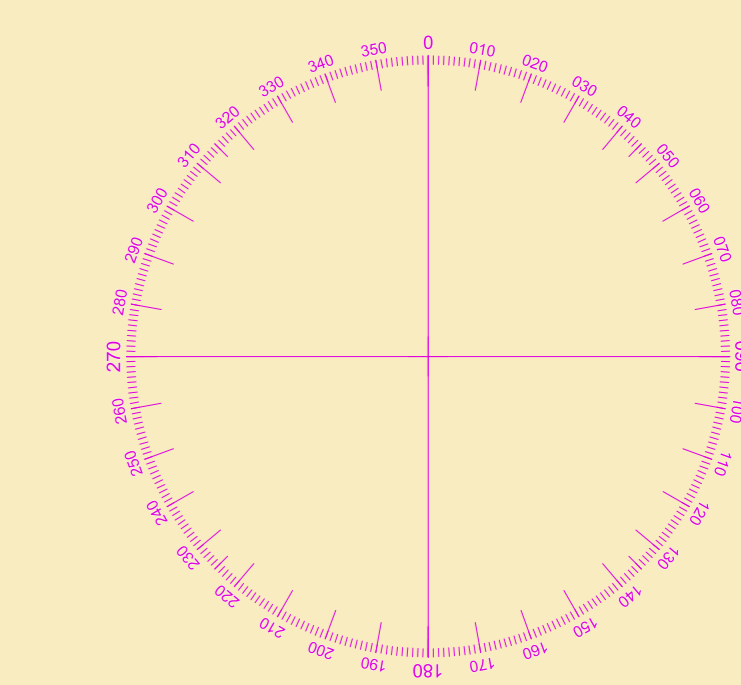
**TOPOGRAPHY**  
 The shore features on this chart are based largely on Ordnance Survey digital mapping data with permission of HMSO. © Crown Copyright 2020. Peel Licence Number 100018033.

**NARROW CHANNEL / BERTH LIMITS**

The black pecked lines indicate the berth limits of Ardrossan Harbour and the pink pecked lines indicate the limits of the narrow channel approaches to Ardrossan Harbour.

**OBSTRUCTIONS/WRECKS**

Black Dashed Rings indicate obstructions or wrecks on the riverbed.  
 Shown by :



Surveyed by: CSL  
 Processed by: CSL  
 Checked by: Callum McFadden  
 Surveyed: 13/03/2020  
 Issued: 16/03/2020