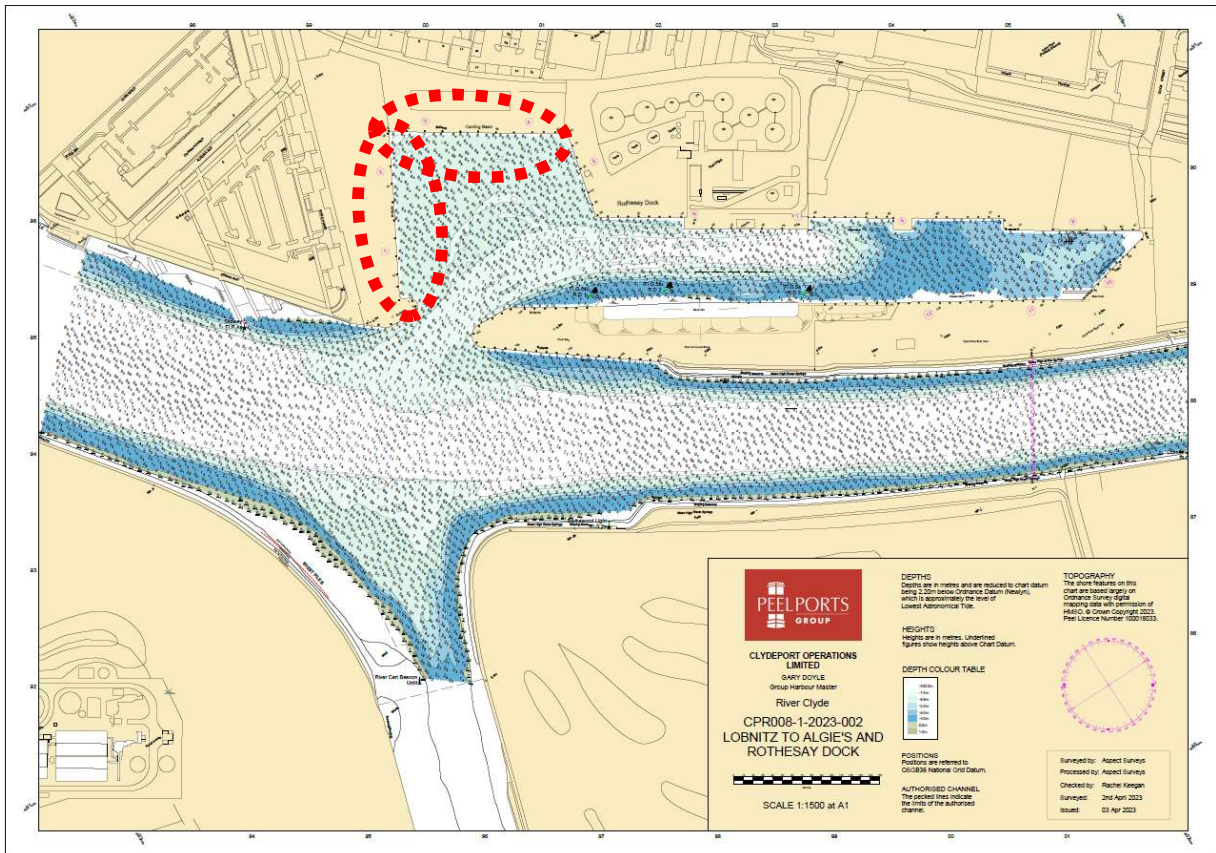
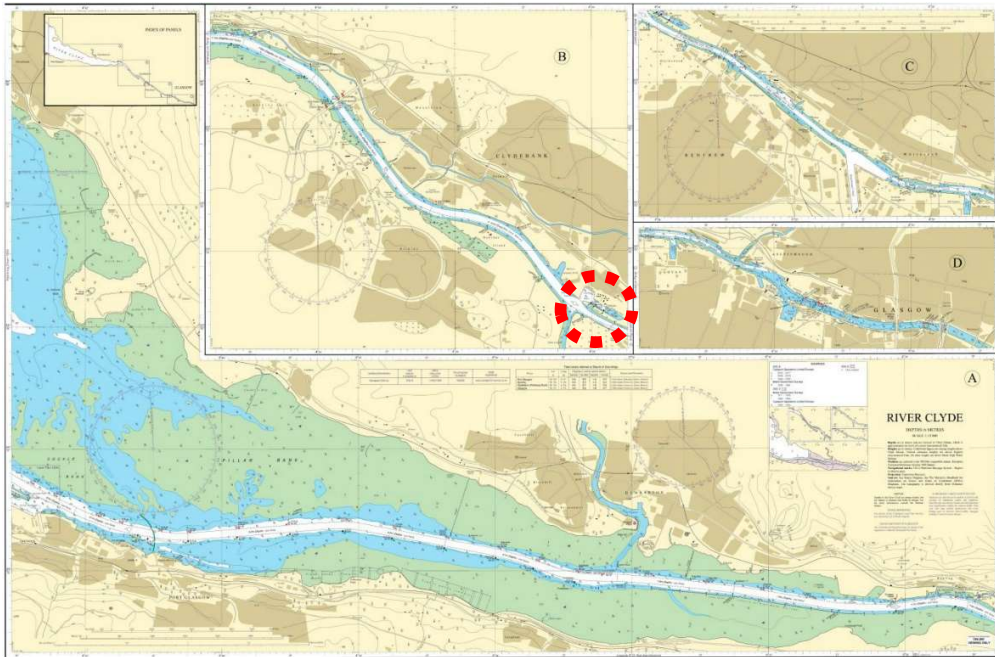


BERTH DATA SHEET

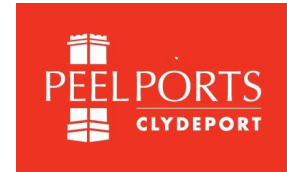
ROTHESAY DOCK - CLYDEBANK



V4 August 2023

BERTH DATA SHEET

ROTHESAY DOCK - CLYDEBANK



PARTICULARS/BASIC INFORMATION

Admiralty Chart No.	2007 Plan B	Survey Drawing No	CPR 008-1
Min. Depth Alongside	Refer Survey Drawing	Fendering	None
Quay Design	Solid concrete	Avg Water Density	1006.6 kg/m ³
Latitude	55°53.68'N	Longitude	004°24.09'W
Quay length overall	168m + 183m	Eastings/Northings	412357, 6195244
No of berths	4	SWL Bollards	Unknown
Max vessel LOA	130m	Avg bollard spacing	20m
Max vessel beam	23.30m	Line of the berth	028°/208° (Berths 1, 2) 122°/302° (Berths 3, 4)
Air Draught restrictions	Erskine Bridge**	Quayside SWL	
ISPS Status	Compliant	Height of cope edge*	6.93m

*from Chart Datum

** up to 49.8m from MHWS unrestricted, up to 53.3m from MHWS 3 months' notice

QUAYSIDE FACILITIES – BY PRIOR ARRANGEMENT

Fresh Water	Yes	Shore Power	
Port Waste	Yes	Cranes	Yes

TIDAL INFORMATION – BASED ON Clydebank

HAT	5.1m	MHWS	4.5m
MHWN	3.7m	MLWN	1.6m
MLWS	0.6m	LAT	-0.1m
Comments			

BERTH OPERATOR

NAME	Peelports	CONTACT DETAILS	0141 445 2241 kgvops@peelports.com
------	-----------	-----------------	---------------------------------------

COMMENTS:

At the far east end of the dock is a small boat yard who have a number of small vessels moored there.

On the south arm, opposite the North East quay, the quay wall has collapsed and is marked by three starboard hand buoys.

Berth 5 is not normally used as it is obstructed by the Fire Water Pump house for the fuel terminal.