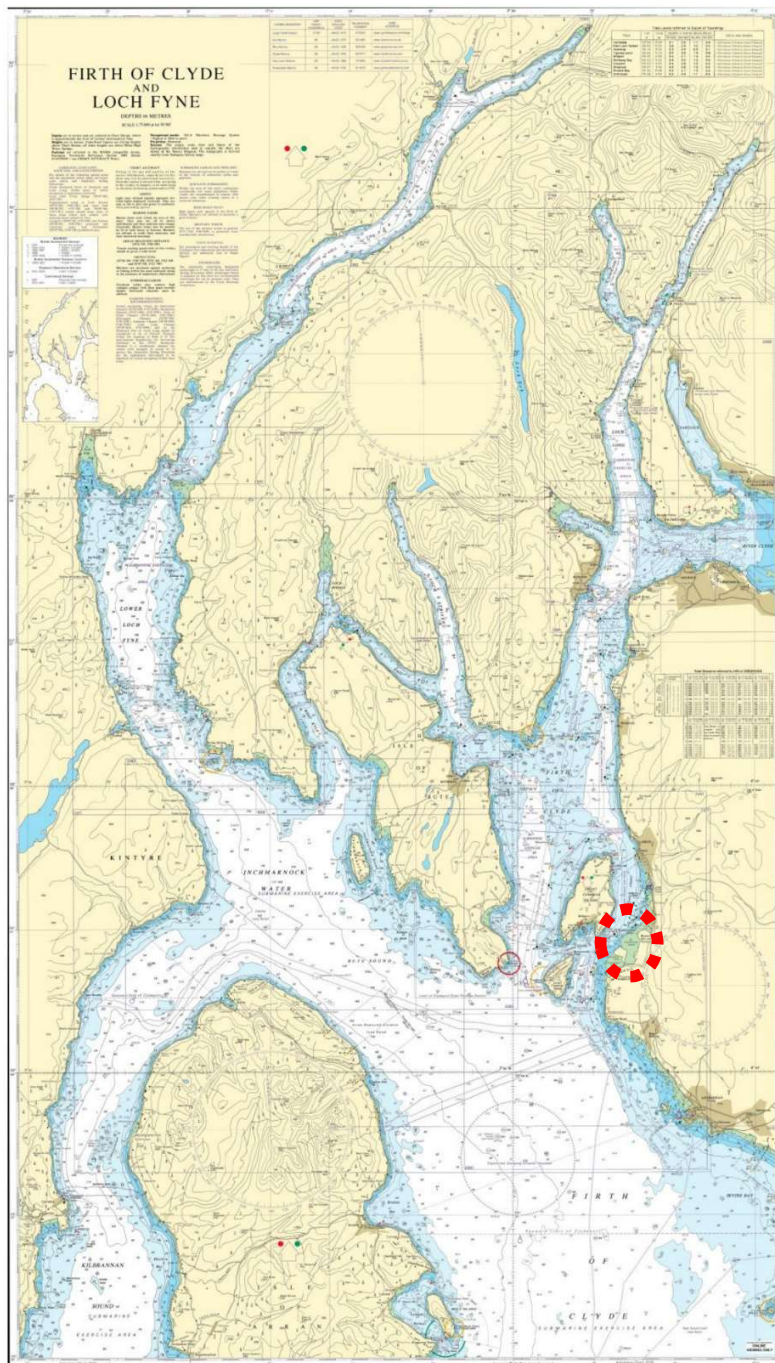


BERTH DATA SHEET

HUNTERSTON PARC



BERTH DATA SHEET

HUNTERSTON PARC



PARTICULARS/BASIC INFORMATION

Admiralty Chart No.	1867 Plan E	Survey Drawing No	HM-1095-1 &1122-1
Min. Depth Alongside	Refer Survey Drawing	Fendering	Yokohama
Quay Design	Piled Jetty	Avg Water Density	1025 kg/m ³
Latitude	55°45.00'N	Longitude	004°53.00'W
Quay length overall	443m Out 300m In	Eastings/Northings	381791, 6179861
No of berths	2	SWL Bollards	100T on berth 150T mooring dolphin
Max vessel LOA	380m Outside 280m Inside	Avg bollard spacing	20m
Max vessel beam	N/A	Line of the berth	033°/213°
Air Draught restrictions	Cranes – see comments	Quayside SWL	44T
ISPS Status	Compliant	Height of cope edge*	8.62m

*from Chart Datum

QUAYSIDE FACILITIES – BY PRIOR ARRANGEMENT

Fresh Water	No	Shore Power	No
Port Waste	No	Cranes	No

TIDAL INFORMATION – BASED ON MILLPORT

HAT	3.86m	MHWS	3.39m
MHWN	2.83m	MLWN	1.06m
MLWS	0.44m	LAT	-0.04m
Comments			

BERTH OPERATOR

NAME	Peelports	CONTACT DETAILS	0151 949 6000
------	-----------	-----------------	---------------

COMMENTS: